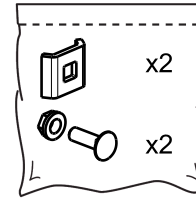
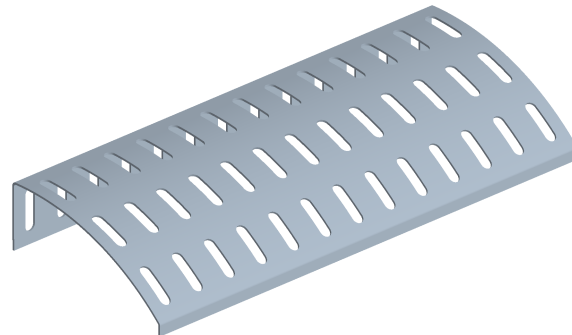


**CABLE DROP OUT
 DROPOUT KIT**

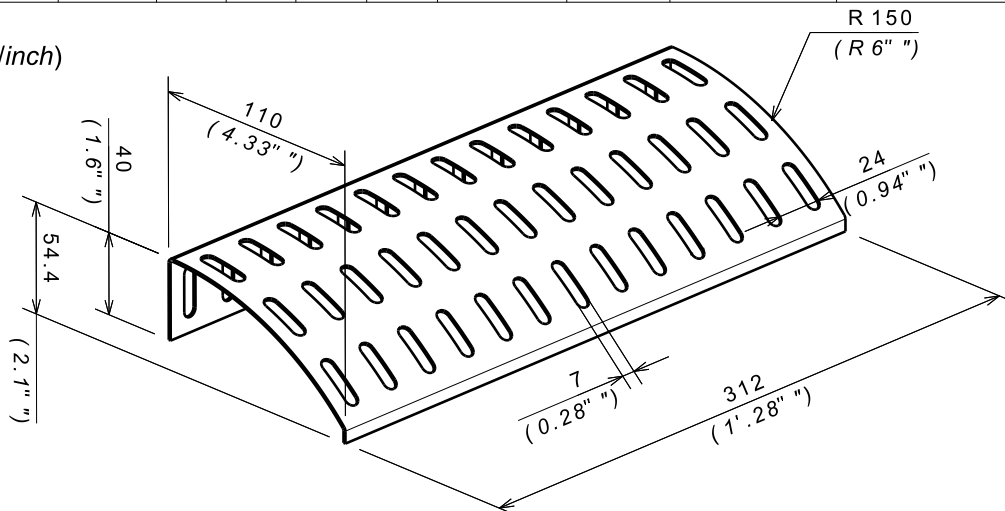
Reference(s) : 942895 ; 942896 ; 944613



1. GAMME / RANGE

Designation	Code	Poids / Weight (Kg) (lb)		Epaisseur / Thickness (mm) (inch)		Matière / Material	Norme / Standard	Finition / Coating	Classe de résistance contre la corrosion/ Resistance class against corrosion
DROPOUTKITPG - GS DROPOUT KIT	942 895	0.460	1.014	1.2	0.047	DX51D Z275	EN 10 346	GS / PG	Class 3 / IEC61537
									Classe d'adhésion / Class of adhesion
DROPOUTKITBL - DROPOUT KIT	942 896	0.506	1.116	1.2	0.047	DX51D Z275	EN 10 346	peinture noire / black paint	Adhésion 5B / ASTM D3359
DROPOUTKITWH - DROPOUT KIT	944 613	0.506	1.116	1.2	0.047			peinture blanche / white paint	

2. DIMENSIONS (mm/inch)



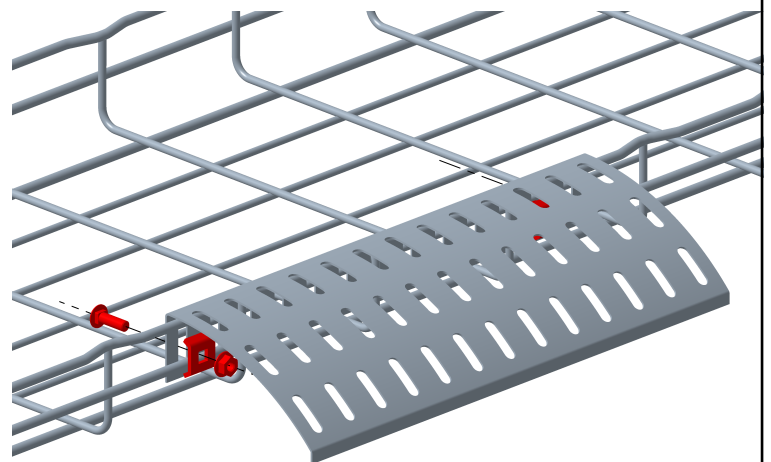
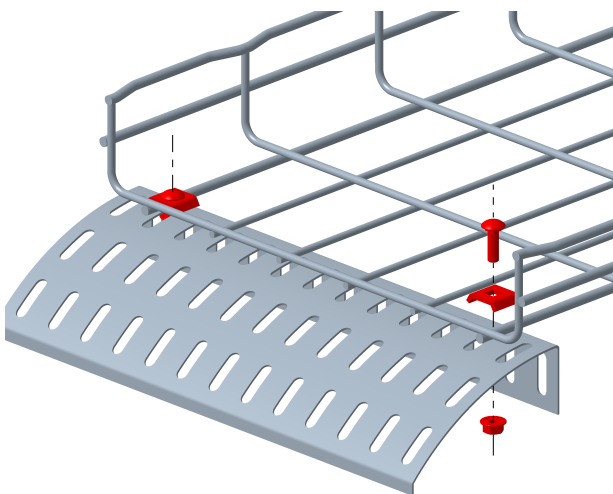
3. INSTALLATION



CF30 - CF54 - CF105 - CF150



CF54 - CF105 - CF150



Montage / mounting : 2x CE25 + 2x EZBN 1/4 (fournis / supplied)

