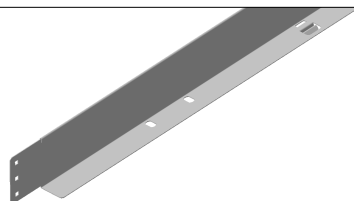


P31 - CORNIERE AUTOMATIQUE H60  
 P31 - DIVIDER AUTO H60

 Reference(s) : **481428/29**  
 Items(s) :


60 mm


**1. GAMME/RANGE**

P31 - CORNIERE H60 GS

P31 - DIVIDER AUTO H60 PG

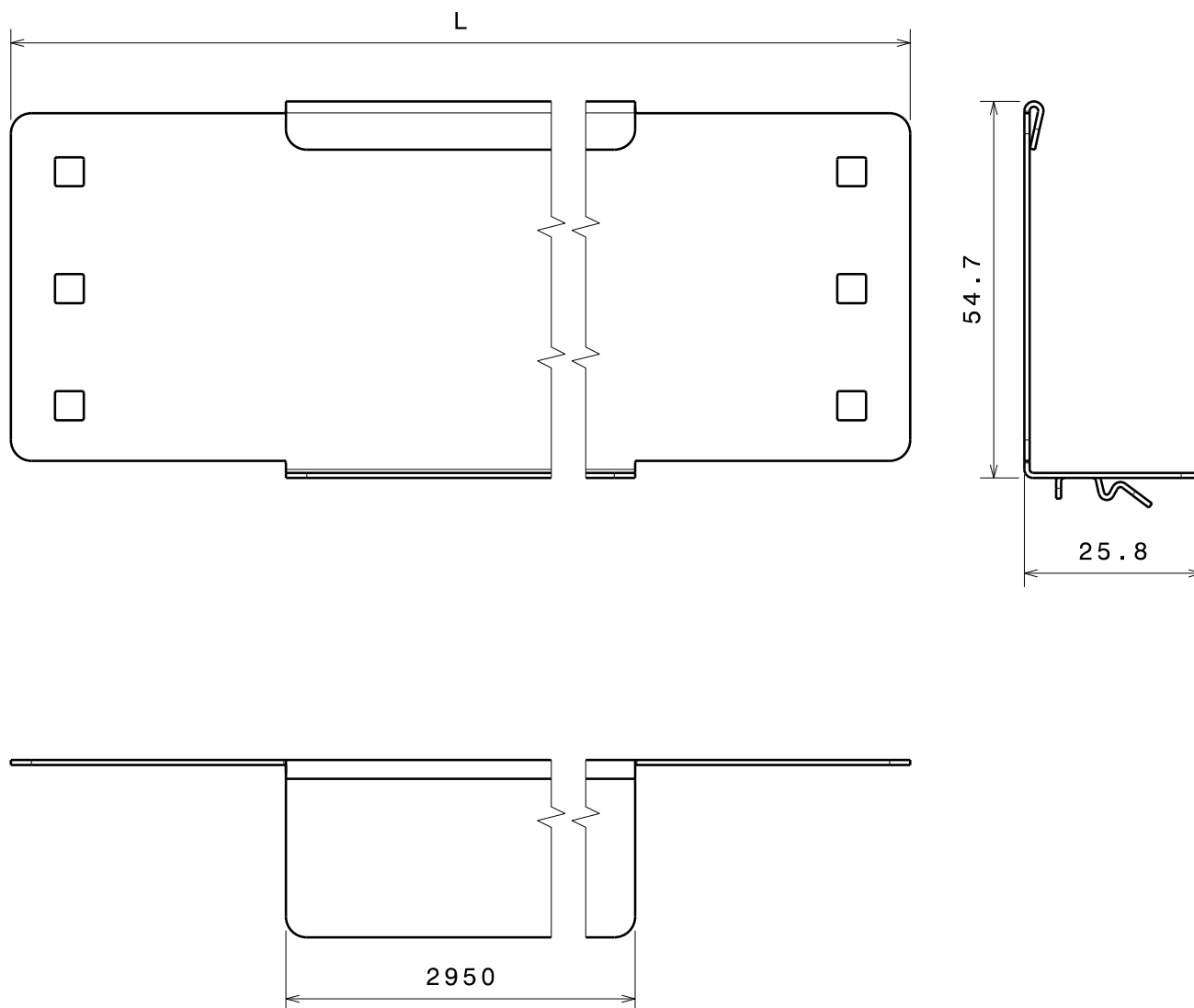
Designation Description	Code	Poids Weight (Kg)	Épaisseur Thickness (mm)	Matière Raw Material	Norme matière Standard Raw Material	Finition Coating	Norme Finition Standard Coating
P31 - CORNIERE 3M H60 mm GS P31 - DIVIDER AUTO 3M H60 mm PG	481429	1,5	0,75	DX51D + Z200	EN 10346	GS/PG/Z	EN 10346
P31 - CORNIERE 1M H60 mm GS P31-DIVIDER AUTO 1M H60 mm PG	481428	0,05	0,75	DX51D + Z200	EN 10346	GS/PG/Z	EN 10346

 Classe de résistance contre la corrosion 3 (IEC 61537)  
 Corrosion resistance classification 3 (IEC 61537)

P31 - CORNIERE AUTOMATIQUE H60  
P31 - DIVIDER AUTO H60

Reference(s) : **481428/29**  
Items(s) :

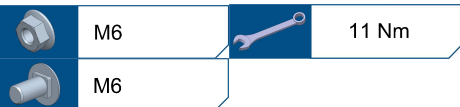
**2. DIMENSIONS (mm)**



Designation Description	Code	L (mm)
P31 - CORNIERE 3M H60 mm GS ----- P31 - DIVIDER AUTO 3M H60 mm PG	481429	3030
P31 - CORNIERE 1M H60 GS ----- P31-DIVIDER AUTO 1M H60 mm PG	481428	1010

P31 - CORNIERE AUTOMATIQUE H60  
P31 - DIVIDER AUTO H60

Reference(s) : **481428/29**  
Items(s) :



Reference(s): 341895 (PG)  
Item(s): 346895 (AISI 316L)

