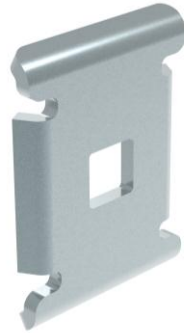


**CE 35**

Reference(s) : 558 180/184/187



**1 RANGE**

Designation	Code	Epaisseur Thickness (mm/Inch)	Masse Weight (Kg/lb)	Matière Raw material	Norme Standard	Finition Coating	Classe de résistance contre la corrosion / Resistance class against corrosion
CE35 GS	558 180	2 / 0,08"	0.015 / 0.033	DX 51 D Z275 MAC	EN 10346	GS / PG	class 3 / CEI 61537
CE35 ZnNi	558 187	2 / 0,08"		S 235 JR	EN 10025	ZnNi	class 8 / CEI 61537
CE35 316L	558 184	2 / 0,08"		X2 Cr Ni Mo 17-12-2	EN 10088-2	IN316L / SS316L	class 9D / CEI 61537

Dimensions in (mm/inch) :

