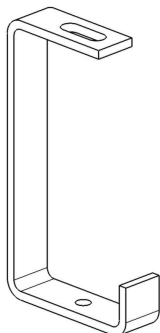


ESO (open tray hanger) GC

Reference(s) : 343 279/280/281/282/283/284



1 RANGE

Ref	Code	Matière Raw material	Norme Standard	Finition Coating	Norme Standard
ESO P31 L75 GC	343279	S 235 JR	EN 10 025	HDG	ISO 1461
ESO P31 L100 GC	343280	S 235 JR	EN 10 025	HDG	ISO 1461
ESO P31 L150 GC	343281	S 235 JR	EN 10 025	HDG	ISO 1461
ESO P31 L200 GC	343282	S 235 JR	EN 10 025	HDG	ISO 1461
ESO P31 L300 GC	343283	S 235 JR	EN 10 025	HDG	ISO 1461
ESO P31 L400 GC	343284	S 235 JR	EN 10 025	HDG	ISO 1461

Ref	Code	Epaisseur Thickness (mm/Inch)	A (mm / inch)	B (mm / inch)	Colisage Packing	Masse Weight (Kg / Lb)
ESO P31 L75 GC	343279	5 / 0,2"	63,5 / 2,5"	79 / 3,11"	10	0,291 / 0,641
ESO P31 L100 GC	343280	5 / 0,2"	76 / 2,99"	102 / 4,02"	10	0,324 / 0,714
ESO P31 L150 GC	343281	8 / 0,31"	102 / 4,02"	154 / 6,06"	6	0,648 / 1,428
ESO P31 L200 GC	343282	8 / 0,31"	127 / 5"	204 / 8,03"	6	0,762 / 1,679
ESO P31 L300 GC	343283	10 / 0,39"	177 / 6,97"	304 / 11,97"	6	1,239 / 2,731
ESO P31 L400 GC	343284	12 / 0,47"	230 / 9,06"	410 / 14,14"	6	2,229 / 4,914

Dimensions in (mm/inch) :

