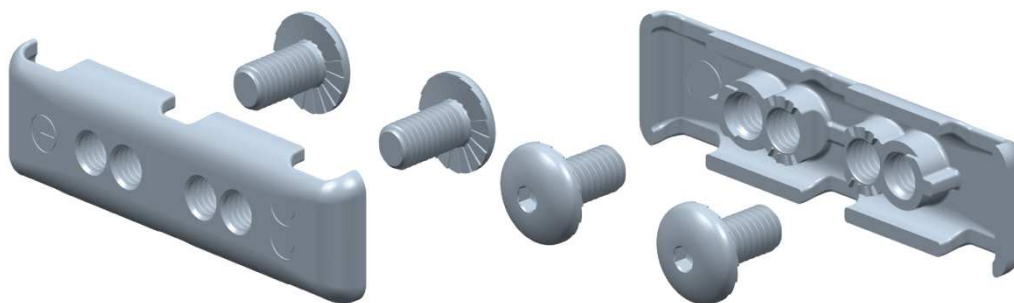


**OFS
 KITFIL UNIFIX**

Reference(s) : 350 503



1 RANGE

Ref	Code	Matière Raw material	Norme Standard	CLASS	STANDARD	Finishing specification s	Finition Coating	THREAD NORM	Epaisseur Thickness (mm/Inch)	Colisage Packing	Masse Weight (KG)
KITFIL UNIFIX	350 503										
1 unifix coupler →		ZAMAK 5	EN 1774	-	-	-	-	-	2 / 0,078	10 unifix + 20 vis en vrac par sachet / 25 sachets par carton	0,032
2 button-head screws M6 L12 →		-	EN 10263-1	4.8	ISO 898-1	Fe/Zn 12/A	EZ	ISO 5408			

Dimensions in (mm/Inch) :

