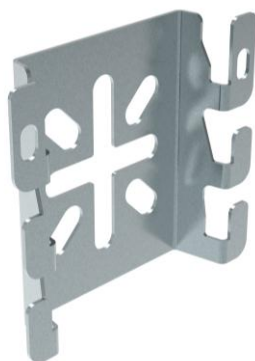


## CM 50XL

Reference(s) : 586 130/133/134/138



### 1 RANGE

| Designation   | Code    | Epaisseur<br>Thickness<br>(mm/Inch) | Masse<br>Weight<br>(KG) | Matière<br>Raw material | Norme<br>Standard | Finition<br>Coating | Classe de résistance<br>contre la corrosion /<br>Resistance class<br>against corrosion |
|---------------|---------|-------------------------------------|-------------------------|-------------------------|-------------------|---------------------|--|
| CM 50 XL GS   | 586 130 | 1,2/0,05"                           | 0,064<br>/<br>0.141     | DX 51 D Z275 MAC        | EN 10346          | GS / PG             | class 3 / CEI 61537  |
| CM 50 XL ZnMg | 586 133 | 1,2/0,05"                           |                         | DX 51 D ZM              | EN 10346          | ZnMg                | class 8 / CEI 61537  |
| CM 50 XL 316L | 586 134 | 1,2/0,05"                           |                         | X2 Cr Ni Mo 17-12-2     | EN 10088-2        | IN316L / SS316L     | class 9D / CEI 61537   |
| CM 50 XL 304L | 586 138 | 1,2/0,05"                           |                         | X2 Cr Ni Mo 18-9        | EN 10088-2        | IN304L / SS304L     | class 9C / CEI 61537   |

Dimensions in (mm/inch) :

