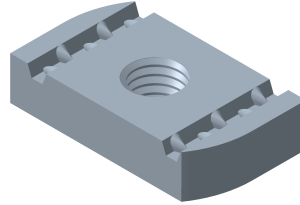


**ECROU 41
 41 NUT**

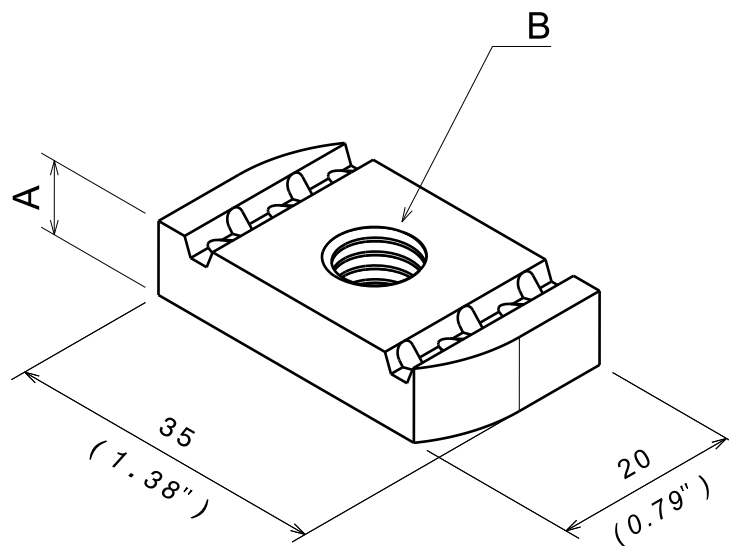
Reference(s) : 801 801/804/807//811/814/817/821
 /824/831/834
 350 448/449/450/451



1. GAMME / RANGE

| Designation | Code | Poids / Weight | | A | | B | Matière / Material | Norme / Standard | Finition / Coating | Classe de résistance contre la corrosion / Resistance class against corrosion |
|--------------|---------|----------------|-------|------|--------|-----|---------------------|------------------|--------------------|---|
| | | (Kg) | (lb) | (mm) | (inch) | | | | | |
| E41 M6 EZ | 801 801 | 0.027 | 0.060 | 6 | 0.236 | M6 | S235 JR | EN 10025 | EZ | Class 3 / IEC 61537 |
| E41 M6 ZnL | 801 807 | | | | | | | | ZnL | Class 6 / IEC 61537 |
| E41 M6 316L | 801 804 | | | | | | X2 Cr Ni Mo 17-12-2 | EN 10 088-2 | IN316L / SS316L | Class 9D / IEC 61537 |
| E41 M6 ZnNi | 350 448 | | | | | | S235 JR | EN 10025 | ZnNi | Class 8 / IEC 61537 |
| E41 M8 EZ | 801 811 | 0.026 | 0.057 | 6 | 0.236 | M8 | S235 JR | EN 10025 | EZ | Class 3 / IEC 61537 |
| E41 M8 ZnL | 801 817 | | | | | | | | ZnL | Class 6 / IEC 61537 |
| E41 M8 316L | 801 814 | | | | | | X2 Cr Ni Mo 17-12-2 | EN 10 088-2 | IN316L / SS316L | Class 9D / IEC 61537 |
| E41 M8 ZnNi | 350 449 | | | | | | S235 JR | EN 10025 | ZnNi | Class 8 / IEC 61537 |
| E41 M10 EZ | 801 821 | 0.038 | 0.084 | 8 | 0.315 | M10 | S235 JR | EN 10025 | EZ | Class 3 / IEC 61537 |
| E41 M10 316L | 801 824 | | | | | | X2 Cr Ni Mo 17-12-2 | EN 10 088-2 | IN316L / SS316L | Class 9D / IEC 61537 |
| E41 M10 ZnNi | 350 450 | | | | | | S235 JR | EN 10025 | ZnNi | Class 8 / IEC 61537 |
| E41 M12 EZ | 801 831 | 0.038 | 0.084 | 9.5 | 0.374 | M12 | S235 JR | EN 10025 | EZ | Class 3 / IEC 61537 |
| E41 M12 316L | 801 834 | | | | | | X2 Cr Ni Mo 17-12-2 | EN 10 088-2 | IN316L / SS316L | Class 9D / IEC 61537 |
| E41 M12 ZnNi | 350 451 | | | | | | S235 JR | EN 10025 | ZnNi | Class 8 / IEC 61537 |

2. DIMENSIONS (mm/inch)



3. INSTALLATION

Compatible avec R21 et R41 / Compatible with R21 and R41