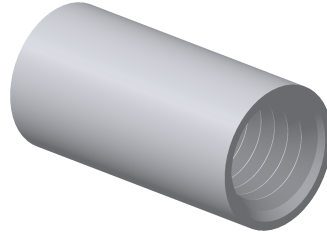


**MANCHON TARAUDE MF  
 ROD CONNECTOR**

Reference(s) : 801 741/51/61/71 - 350 430/31/32/33



**1. GAMME / RANGE**

Designation	Code	Poids / Weight (Kg) / (lb)		Ø A (mm) / (inch)		B	L (mm) / (inch)		Classe / Class	Norme / Standard	Finition / Coating	Classe de résistance contre la corrosion/ Resistance class against corrosion
MF 6x20 EZ	801 741	0.008	0.018	9	0.354	M6	20	0.787	5	ISO 898-1	EZ	Class 1 / IEC 61537
MF 8x20 EZ	801 751	0.008	0.018	10	0.394	M8	20	0.787				
MF 10x30 EZ	801 771	0.015	0.033	13	0.512	M10	30	1.181				
MF 12x30 EZ	801 761	0.018	0.040	15	0.591	M12	30	1.181				
MF 6x20 ZnNi	350 430	0.008	0.018	9	0.354	M6	20	0.787	5	ISO 898-1	ZnNi	Class 8 / IEC 61537
MF 8x20 ZnNi	350 431	0.008	0.018	10	0.394	M8	20	0.787				
MF 10x30 ZnNi	350 432	0.015	0.033	13	0.512	M10	30	1.181				
MF 12x30 ZnNi	350 433	0.018	0.040	15	0.591	M12	30	1.181				

**2. DIMENSIONS (mm/inch)**

