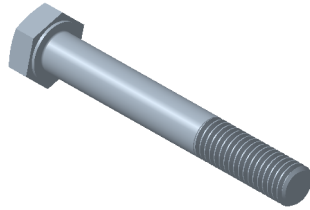
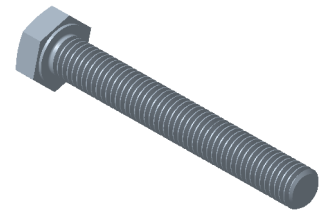


**VIS VHM
VHM SCREW**

Reference(s) : 801 301/04/21/23/24/31/41/44/61/71/74
801 401/04/11/14/21/24/31/43/53/61/64/67/71/74/
350 436/37/38/39/40/41/42/43/44/45/46/47



VHM PF



VHM

1. GAMME / RANGE

Designation	Code	Type	Poids / Weight (Kg) (lb)		L (mm) (inch)		d1	Classe / Class	Norme / Standard	Finition / Coating	Classe de résistance contre la corrosion/ Class for resistance against corrosion
VHM6x12 ZnNi-HR	350 436	EN ISO 4017	0.0055	0.012	12	0,787	M6	≥ 6.8	ISO 898-1	ZnNi	Class 8 / IEC 61537
VHM6x20 EZ	801 301		≥ 6.8	ISO 898-1	EZ			Class 1 / IEC 61537			
VHM6x20 316L	801 304		0.0075	0.017	20			A4	ISO 3506-1	IN316L / SS316L	Class 9D / IEC 61537
VHM6x20 ZnNi-HR	350 437		≥ 6.8	ISO 898-1	ZnNi			Class 8 / IEC 61537			
VHM8x20 EZ	801 321		≥ 6.8	ISO 898-1	EZ			Class 1 / IEC 61537			
VHM8x20 ZnL	801 323		8.8	ISO 898-1	ZnL			Class 6 / IEC 61537			
VHM8x20 316L	801 324		A4	ISO 3506-1	IN316L / SS316L			Class 9D / IEC 61537			
VHM8x20 ZnNi-HR	350 438		≥ 6.8	ISO 898-1	ZnNi			Class 8 / IEC 61537			
VHM8x25 EZ	801 331		≥ 6.8	ISO 898-1	EZ			Class 1 / IEC 61537			
VHM8x30 ZnL	801 443		8.8	ISO 898-1	ZnL			Class 6 / IEC 61537			
VHM8x30 ZnNi-HR	350 440		≥ 6.8	ISO 898-1	ZnNi			Class 8 / IEC 61537			
VHM8x40 EZ	801 341		≥ 6.8	ISO 898-1	EZ			Class 1 / IEC 61537			
VHM8x40 316L	801 344	A4	ISO 3506-1	IN316L / SS316L	Class 9D / IEC 61537						
VHM8x40 ZnNi-HR	350 441	≥ 6.8	ISO 898-1	ZnNi	Class 8 / IEC 61537						
VHM8x45 ZnL	801 467	8.8	ISO 898-1	ZnL	Class 6 / IEC 61537						
VHM8x60 PF ZnL	801 453	EN ISO 4014	0.0305	0.067	60	2,362	8.8	ISO 898-1	ZnL	Class 6 / IEC 61537	
VHM8x60 ZnNi-HR	350 442	EN ISO 4017	0.0305	0.067	60	2,362	≥ 6.8	ISO 898-1	ZnNi	Class 8 / IEC 61537	
VHM10x20 EZ	801 361		0.024	0.053	20	0,787	≥ 6.8	ISO 898-1	EZ	Class 1 / IEC 61537	
VHM10x25 EZ	801 371		≥ 6.8	ISO 898-1	EZ	Class 1 / IEC 61537					
VHM10x25 316L	801 374		0.027	0.060	25	0,984	A4	ISO 3506-1	IN316L / SS316L	Class 9D / IEC 61537	
VHM10x25 ZnNi-HR	350 439		≥ 6.8	ISO 898-1	ZnNi	Class 8 / IEC 61537					
VHM10x70 EZ	801 431		≥ 6.8	ISO 898-1	EZ	Class 1 / IEC 61537					
VHM10x70 PF ZnNi-HR	340 443		EN ISO 4014	0.055	0.121	70	2,756	≥ 6.8	ISO 898-1	ZnNi	Class 8 / IEC 61537
VHM12x25 EZ	801 401		≥ 6.8	ISO 898-1	EZ	Class 1 / IEC 61537					
VHM12x25 316L	801 404		0.039	0.086	25	0,984	A4	ISO 3506-1	IN316L / SS316L	Class 9D / IEC 61537	
VHM12x25 ZnNi-HR	350 444		≥ 6.8	ISO 898-1	ZnNi	Class 8 / IEC 61537					
VHM12x30 EZ	801 411		0.044	0.097	30	1,181	≥ 6.8	ISO 898-1	EZ	Class 1 / IEC 61537	
VHM12x30 316L	801 414		A4	ISO 3506-1	IN316L / SS316L	Class 9D / IEC 61537					
VHM12x50 EZ	801 421	≥ 6.8	ISO 898-1	EZ	Class 1 / IEC 61537						
VHM12x50 316L	801 424	0.060	0.132	50	1,969	A4	ISO 3506-1	IN316L / SS316L	Class 9D / IEC 61537		
VHM12x50 ZnNi-HR	350 445	EN ISO 4017	0.060	0.132	50	1,969	≥ 6.8	ISO 898-1	ZnNi	Class 8 / IEC 61537	
VHM12x70 EZ	801 461	≥ 6.8	ISO 898-1	EZ	Class 1 / IEC 61537						
VHM12x70 316L	801 464	0.078	0.172	70	2,756	A4	ISO 3506-1	IN316L / SS316L	Class 9D / IEC 61537		
VHM12x70 ZnNi-HR	350 446	≥ 6.8	ISO 898-1	ZnNi	Class 8 / IEC 61537						
VHM12x110 EZ	801 471	≥ 6.8	ISO 898-1	EZ	Class 1 / IEC 61537						
VHM12x110 316L	801 474	0.114	0.0131	110	4,331	A4	ISO 3506-1	IN316L / SS316L	Class 9D / IEC 61537		
VHM12x110 ZnNi-HR	350 447	EN ISO 4017	0.114	0.0131	110	4,331	≥ 6.8	ISO 898-1	ZnNi	Class 8 / IEC 61537	

2. DIMENSIONS (mm/inch)

