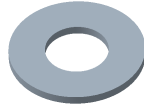


RONDELLE PLATE - RM
RM - WASHER

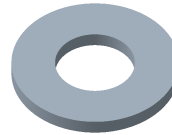
Reference(s) : 801 501/04/11/13/14/21/24/31/34
350 420/21/22/23



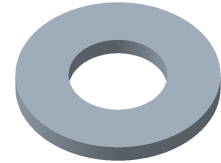
RM6



RM8



RM10

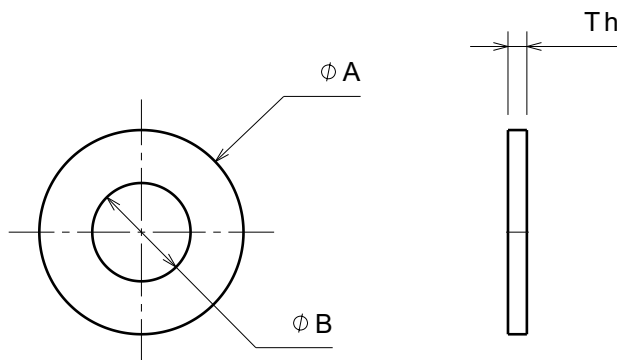


RM12

1. GAMME / RANGE

Designation	Code	Epaisseur / Thickness (mm) / (inch)		Poids / Weight (Kg) / (lb)		Classe / Class	Norme / Standard	Finition / Coating	Classe de résistance contre la corrosion / Resistance class against corrosion
RM6 EZ	801 501	1.2	0.047	0.001	0.002	Grade A	ISO 7089	EZ	Class 1 / IEC 61537
RM6 316L	801 504	1.6	0.063			Grade C		IN316L / SS316L	Class 9D / IEC 61537
RM6 ZnNi	350 420	1.2	0.047			Grade A		ZnNi	Class 8 / IEC 61537
RM8 EZ	801 511	1.5	0.059	0.002	0.004	Grade A	ISO 7089	EZ	Class 1 / IEC 61537
RM8 ZnL	801 513					Grade A		ZnL	Class 6 / IEC 61537
RM8 316L	801 514	1.6	0.063			Grade C		IN316L / SS316L	Class 9D / IEC 61537
RM8 ZnNi	350 421	1.5	0.059			Grade A		ZnNi	Class 8 / IEC 61537
RM10 EZ	801 521	2	0.08	0.005	0.011	Grade A	ISO 7089	EZ	Class 1 / IEC 61537
RM10 316L	801 524					Grade C		IN316L / SS316L	Class 9D / IEC 61537
RM10 ZnNi	350 422					Grade A		ZnNi	Class 8 / IEC 61537
RM12 EZ	801 531	2.5	0.10	0.008	0.018	Grade A	ISO 7089	EZ	Class 1 / IEC 61537
RM12 316L	801 534					Grade C		IN316L / SS316L	Class 9D / IEC 61537
RM12 ZnNi	350 423					Grade A		ZnNi	Class 8 / IEC 61537

2. DIMENSIONS (mm/inch)



Designation	A (mm) / (inch)		B (mm) / (inch)		Th (mm) / (inch)	
RM6 EZ-ZnNi	14	0.55	6.4	0.25	1.2	0.047
RM6 IN316L	12	0.47			1.6	0.063
RM8 EZ - DC - ZnNi	18	0.71	8.4	0.33	1.5	0.059
RM8 IN316L	16	0.63			1.6	0.063
RM10 EZ - ZnNi	22	0.87	10.5	0.41	2	0.08
RM10 IN316L	20	0.79				
RM12 EZ - ZnNi	27	1.06	13	0.51	2.5	0.10
RM12 IN316L	24	0.94				