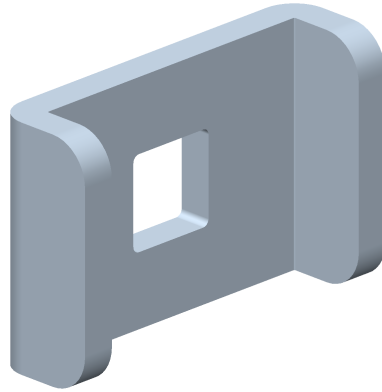


**ECLISSE CE30
 CE30 SPLICE**

Reference(s) : 558 041/43/44/48 - 350570



1. GAMME / RANGE

Designation	Code	Poids / Weight (Kg) (lb)		Epaisseur / Thickness (mm) (inch)		Matière / Material	Norme / Standard	Finition / Coating	Classe de résistance contre la corrosion/ Class for resistance against corrosion
CE30 GS	558 041	0.015	0.033	2,5	0,098	DX51D Z275	EN 10 346	GS	Class 3 / IEC 61537
CE30 ZnL	558 043					S235 JR	EN 10 025	ZnL	Class 6 / IEC 61537
CE30 316L	558 044					X2 Cr Ni Mo 17-12-2	EN 10 088-2	IN3016L / SS316L	Class 9D / IEC 61537
CE30 304L	558 048					X2 Cr Ni Mo 18-9	EN 10 088-2	IN304L / SS304L	Class 9C / IEC 61537
CE30 ZnMg	350 570					S220 GD ZM	EN 10 346	ZnMg	Class 8 / IEC 61537

2. DIMENSIONS (mm/inch)

