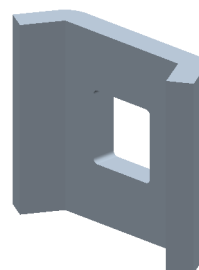
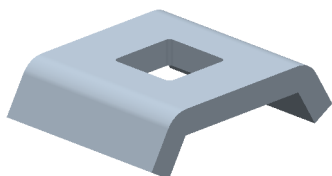


**ECLISSE CE25
 CE25 SPLICE**

Reference(s) : 558 011//13/14/18 - 350569



1. GAMME / RANGE

Designation	Code	Poids / Weight (Kg) (lb)		Epaisseur / Thickness (mm) (inch)		Matière / Material	Norme / Standard	Finition / Coating	Classe de résistance contre la corrosion/ Class for resistance against corrosion
CE25 GS	558 011	0.008	0.018	2,5	0,098	DX51D Z275	EN 10 346	GS	Class 3 / IEC 61537
CE25 ZnL	558 013					S235 JR	EN 10 025	ZnL	Class 6 / IEC 61537
CE25 316L	558 014	0.006	0.013	2	0,079	X2 Cr Ni Mo 17-12-2	EN 10 088-2	IN3016L / SS316L	Class 9D / IEC 61537
CE25 304L	558 018					X2 Cr Ni Mo 18-9	EN 10 088-2	IN304L / SS304L	Class 9C / IEC 61537
CE25 ZnMg	350 569	0.008	0.018	2.5	0.098	S220 GD ZM	EN 10 346	ZnMg	Class 8 / IEC 61537

2. DIMENSIONS (mm/inch)

