

## Lexiclic horizontal distribution block

Cat.No(s): ORR2501XX - ORR2503XX ORR2501M24 - ORR2503M24  
ORR250N106 - ORR250N110 - ORR250B106 - ORR250B110  
ORR250N306 - ORR250N310 - ORR250B306 - ORR250B310  
ORR250CS1 - ORR250CS2 - ORR250CS3



### 1. USE

The horizontal Lexiclic distribution block allows single-phase or three-phase distribution to modular devices.

Safe live connection and disconnection (no load) (IP XXB) via auto-locking connector cords.

Under installation conditions, it complies with IS 223 at the row level.

### 2. RANGE

#### 2.1 Cat.Nos

	Mounting	Cat.Nos
Single-phase	On crosspieces in XL <sup>3</sup> HP 630 and 6300	ORR2501XX
	On functional uprights XL <sup>3</sup> HP 630 24 modules	ORR2501M24
Single-phase - Three-phase	On crosspieces in XL <sup>3</sup> HP 630 and 6300	ORR2503XX
	On functional uprights XL <sup>3</sup> HP 630 24 modules	ORR2503M24

Supplied with protective cover.

Type	Section	Cord with crimp connectors length	
		120 mm	320 mm
Phase (black)	6 mm <sup>2</sup>	ORR250N106	ORR250N306
	10 mm <sup>2</sup>	ORR250N110	ORR250N310
Neutral (blue)	6 mm <sup>2</sup>	ORR250B106	ORR250B306
	10 mm <sup>2</sup>	ORR250B110	ORR250B310

Crimp connectors			
For cord section :	1.5 to 2.5 mm <sup>2</sup>	4 to 6 mm <sup>2</sup>	10 mm <sup>2</sup>
Cat.Nos	ORR250CS1	ORR250CS2	ORR250CS3

### 3. TECHNICAL CHARACTERISTICS

#### 3.1 Mechanical characteristics

Protection against solid/liquid ingress: IP 20

#### 3.2 Material characteristics

- Distribution blocks: polycarbonate body, copper bars, polyurethane insulation, PVC protection

- Cords: H07V-K wire, polycarbonate body, copper contact

- Connectors: polycarbonate body, copper contact

#### 3.3 Electical characteristics

	Distribution block	
	Single-phase	Three-phase
Rated current at 40°C (I <sub>n</sub> )	250 A	250 A
Operational current (I <sub>e</sub> )	250 A	250 A
Rated operated voltage (U <sub>e</sub> )	500 V	500 V
Rated impulse withstand voltage (U <sub>imp</sub> )	6 kV	6 kV
Rated insulation voltage (U <sub>i</sub> )	660 V	660 V
Frequency (f <sub>n</sub> )	50 Hz	50 Hz
Rated voltage	500 V	500 V
Conditional short-circuit current (I <sub>cc</sub> )	35 kA	35 kA
Peak withstand current (I <sub>pk</sub> )	60 kA	60 kA
Thermal stress	74 M A <sup>2</sup> .s	74 M A <sup>2</sup> .s

	Connectors	
	6 mm <sup>2</sup>	10 mm <sup>2</sup>
Rated current at 40°C (I <sub>n</sub> )	40 A	63 A

#### 3.4 Climatic characteristics

Operating temperature: -25°C to +55°C

Storage temperature: -25°C to +70°C

## 4. CONNECTION

### Upstream connection:

- Via lugs on distributor terminals (Ø 5 mm), mounted on crosspieces or supplied brackets
- On busbars

### Downstream connection:

Via cords with connectors

## 5. INSTALLATION

### On crosspieces:

Mounting of distribution block Cat. Nos ORR2501XX and ORR2503XX on crosspieces Cat.Nos 2PR24 or 2PR36 in XL<sup>3</sup> HP 630 enclosures and Cat.Nos 3PR... in XL<sup>3</sup> HP 6300 enclosures using supplied brackets.

### On functional uprights:

Mounting of distribution block Cat. Nos ORR2501M24 and ORR2503M24 in XL<sup>3</sup> HP 630 24-module enclosures using supplied brackets.

### On busbars:

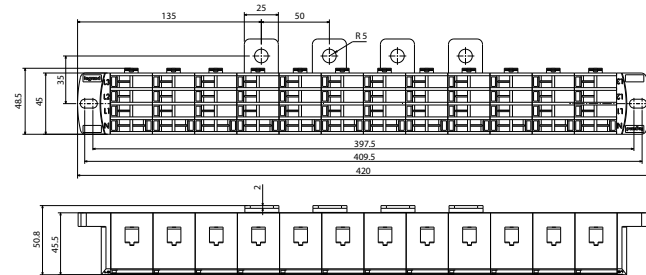
Mounting on busbars with support Cat.Nos 0SB24M400CU or 0SBXX400CU. Mount without brackets for distribution block Cat. Nos ORR2501M24 and ORR2503M24.

### Installation recommendations:

In order to allow the installation of connectors under live conditions, a physical protection must be put in place to prevent access to live parts (upstream terminals of the Lexiclic, lugs, busbars), in accordance with the requirements of IS 223. The protective cover provided alone is not sufficient to meet this requirement.

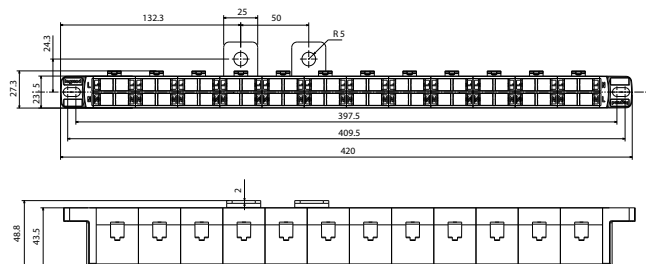
## 6. DIMENSIONS AND WEIGHT

Single-phase / Three-phase



ORR2503XX : 1.28 kg  
 ORR2503M24 : 1.28 kg

Single-phase



ORR2501XX : 0.67 kg  
 ORR2501M24 : 0.67 kg

## 7. STANDARDS AND REGULATIONS

### RoHS :

Compliance with the 2011/65/EU Directive (RoHS), as modified by the 2015/863/EU Delegated Directive, on the restriction of the use of certain hazardous substances in electrical and electronic equipment.

### Reach

The substances identified as SVHC (Substances of Very High Concern) according to the REACH Regulation (1907/2006), if present in the products at a concentration above 0.1% weight by weight, are declared inside the European SCIP database. At the date of publication of this document none of the substance listed in the annex XIV is found in this product.

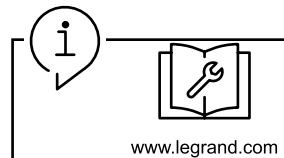
### WEEE :

WEEE Directive (2012/19/EU): the sale of this product includes a contribution to the appointed environmental bodies of each European country in charge of handling, at the end of their life, the products falling within the scope of the EU Directive on Electrical and Electronic Equipment Waste.

### Packaging

Design and manufacture of packaging compliant with European Directive 94/62/CE.

## 8. OTHER INFORMATION



**Instruction sheet:** detailed mounting procedures, available on e-catalog

**Workshop book:** mounting information, available on e-catalog

**Maintenance guide:** maintenance information for products installed in a main LV switchboard, available on e-catalog

**XLPro4 Panels:** Distribution panel design software, addressed to panelbuilders and electrical panel designers. Design of the electrical distribution of the panel, production of electrical diagrams, establishment of products and overall costing of the project.

For further technical information, please contact Legrand technical support.

Unless otherwise indicated, data reported in this document refers exclusively to test conditions according to product standards.

For different conditions of use of the product, inside electrical equipment or in any different installation context, refer to the regulatory requirements of the equipment, local regulations and design specifications of the system.