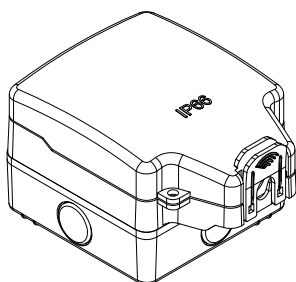
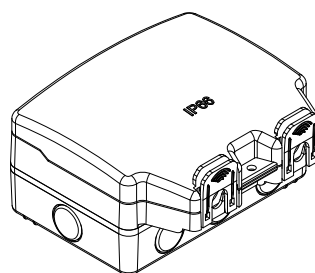


IP66 Waterproof box

Cat. No(s): 6 846 31/32



6 846 31



6 846 32

1. USE

IP66 waterproof enclosure.
 Surface mounting, receives the mechanisms of the BS range.

2. RANGE

Designation	Light grey
1 Gang BS Enclosure IP66	6 846 31
2 Gang BS Enclosure IP66	6 846 32

3. INSTALLATION

1. The unit should be fixed to a rigid flat surface as unevenness could cause damage to the product or affect the operation.

2. If Front assembly is fitted to base, remove fixing screws & remove Front assembly from Rear Box.

3. Drill the required number of fixing holes.

NOTE

The drilling out of drain hole or removing rear knock-out will reduce the IP rating of the product.

4. Mount the Rear Box using No.8 screws in all four positions.

5. Make cable entry into Rear Box as required. The fixing holes are slotted to allow some rotational adjustment.

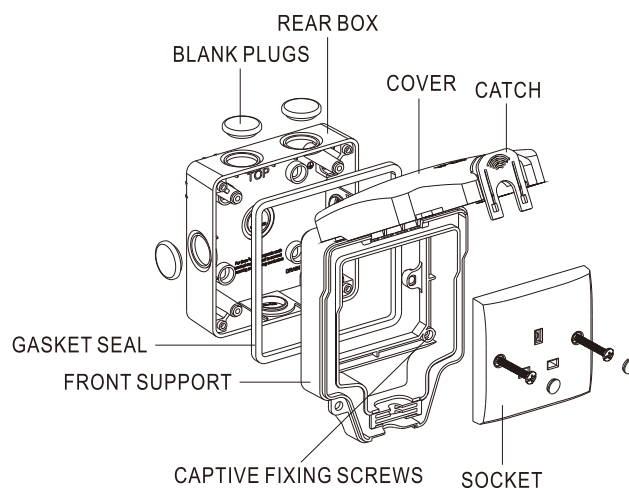
6. The outdoor use of unprotected flat PVC insulated cable is NOT recommended.

7. Refit Front Assembly onto Rear Box using captive screws- DO NOT OVERTIGHTEN.

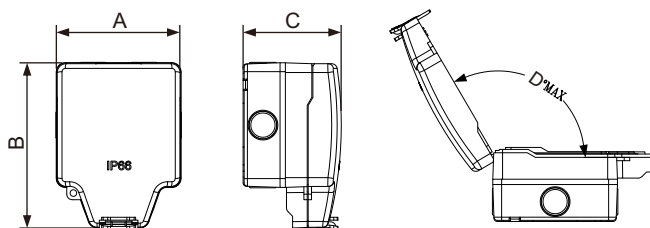
8. Connect the wires to the correct socket rear terminals.

9. After wiring socket, put the socket into the Front Assembly using the screws supplied with the socket (M3.5mm) to complete installation.

10. For security to prevent unwanted tampering with Socket, a lug feature with a 6mm hole is provided to accept a padlock.



4. DIMENSIONS (mm)



References	A	B	C	D(Max)
684631	113.6	151.8	89	120°
684632	169	151.8	89	120°

IP66 Waterproof box

Cat. No(s): 6 846 31/32

5. TECHNICAL CHARACTERISTICS

5.1 Material characteristics

Lid cover / Lid bottom: PC
Bottom box: PP
Self-extinguishing: 850°C / 30s
Resistance to salt spray: 7 days (168 hrs)

5.2 Climate characteristics

Storage temperatures: -10°C to +70°C
Operating temperatures: -5°C to +50°C

5.3 Mechanical characteristics

Impact test: IK07
Protection index: IP66

6. CLEANING

Surface cleaning with a soft, slightly damp cloth.
Do not use: acetone, tar remover, trichloroethylene.

7. SAFETY

This product must be installed in accordance with the latest edition of the IEE Wiring Regulations.

Where conduit is used for cable runs, water consideration **MUST** be prevented from collecting inside the unit & conduit. Drain holes **MUST** be drilled out.

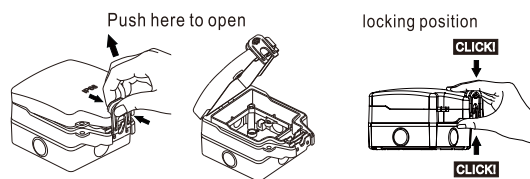
If metal conduit is used, earth continuity across the conduit must be maintained using appropriate connections.

Where outdoor cable runs occur, the outdoor use of unprotected flat PVC insulated cable is **NOT** recommended.

The enclosure is IP66 rated. To ensure continued safe & proper weather proof operation, the unit **MUST** not be left with cover raised open or the catch left unlocked. Unused cable entries **MUST** have Blank Plugs Fitted.

The IP66 rating can only be achieved when the cover is pressed down and fastened firmly. Please ensure the cable passes through the center of the cable outlet, and completely enclosed by the special seal.

Possibility to add a Padlock (not supplied).



8. CONFORMITY - APPROVALS

Conform to IEC 60529.