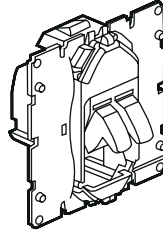


Céliane™

Loudspeaker socket

Cat. No(s): CM0311



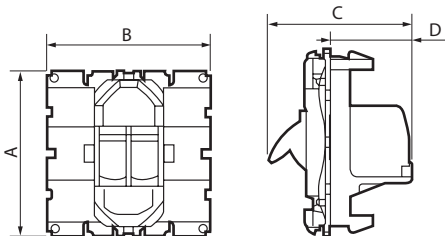
1. USAGE

HP stroller socket.
 Allows speaker connection.
 Possibility of creating a double socket by combining 2 mechanisms.
 Recessed or surface mounting in box depth 40 mm minimum.

2. RANGE

Designation	Reference
Speaker socket with automatic stroller marked Black and Red.	CM0311

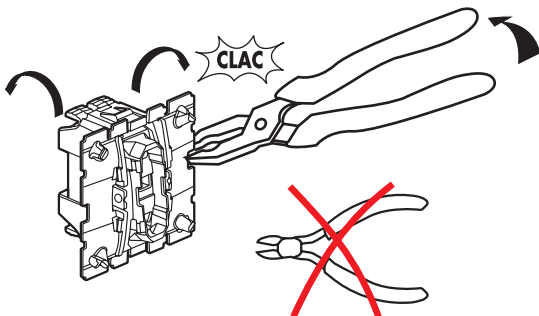
3. DIMENSIONS (mm)



A	B	C	D
45	45	35	20

4. PREPARATION

This product can be dual-mounted once the side labs have been broken off.

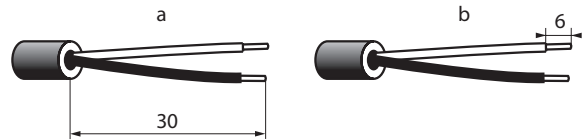


5. CONNECTION

Stripping:

Recommended cable: audio cable 2 x 6 mm²

- a - Cable unsheathing length: 30 mm
- b - Core stripping length: 6 mm

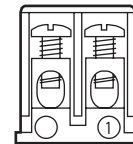


Connection:

Terminal type: with screws

Screwdriver: flat from 0.4 to 2.5 mm

Follow the wiring diagram below:



1 - Audio ground

6. TECHNICAL CHARACTERISTICS

■ 6.1 Mechanical characteristics

impact tests: IK 04

Penetration by solid bodies and liquids: IP 20

■ 6.2 Material characteristics

Mechanism casing: PC

Self-extinguishing: 650°C/30 s

■ 6.3 Climate characteristics

Storage temperature: -10°C to +70°C

Usage temperature: -5°C to +35°C