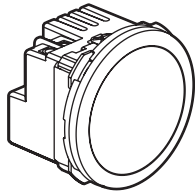
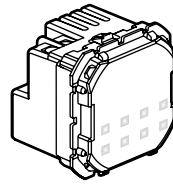


**Céliane™**  
**LED lighting**

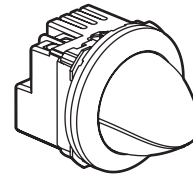
Cat. No(s): **CM0271 - CM0272 - CM0274**



CM0272



CM0274



CM0271  
 Total rotation  
 of the cover

**1. USE**

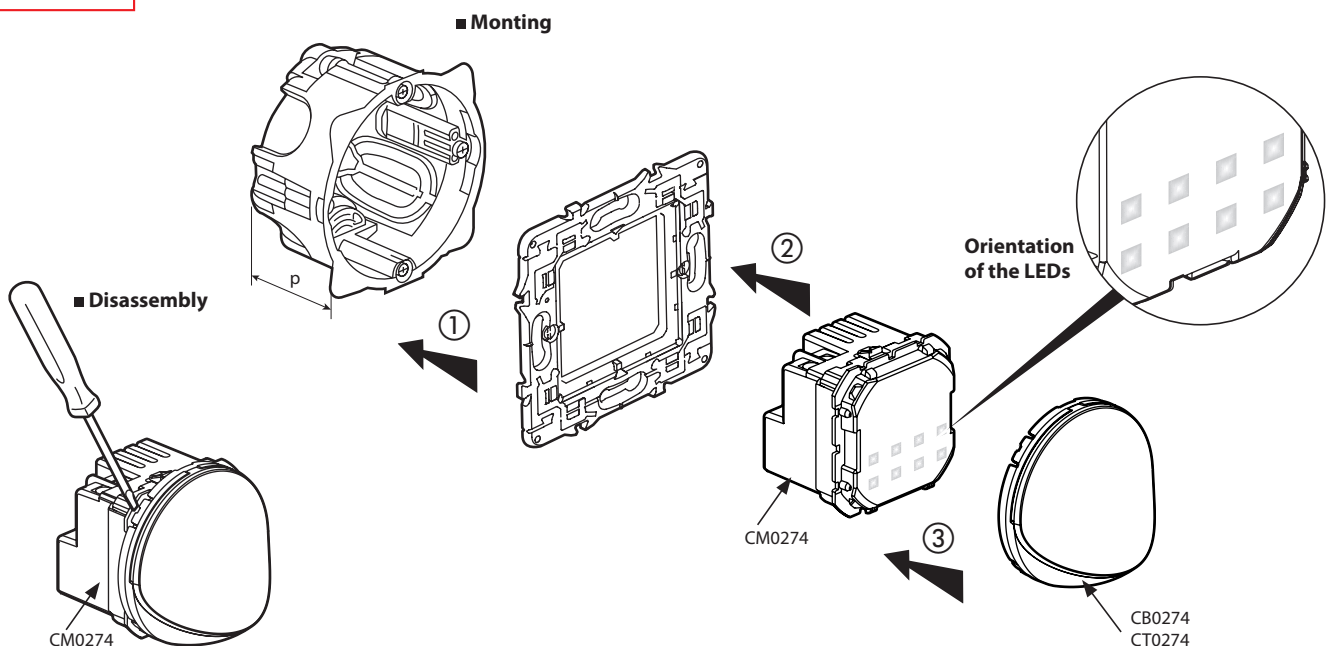
For specific directionnal lighting in harmony with Céliane wiring devices range.

**2. RANGE**

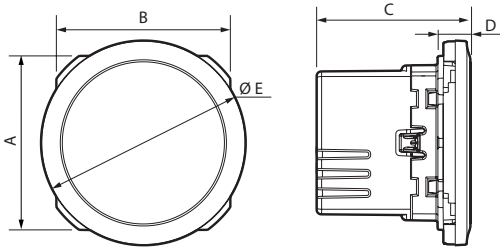
References	Description	
CM0271	Directional light: illuminates a worktop. Adjustable beyond 360°. Supplied with a matt chrome cover.	Luminous flux: 80 lm - Power input: 2.8 W Color temperature: 3,000 K, neutral white
CM0272	Spot for diffused lighting: illuminates a circulation zone. Supplied with white opalescent cover.	Luminous flux: 110 lm - Power input: 2.4 W Color temperature: 3,000 K, neutral white
CM0274	Stair light: lights and decorates a staircase. Recommended installation: 30 cm from the ground. To be equipped with white cover ref. CB0274 or titanium ref. CT0274.	Luminous flux: 100 lm with cover Power input: 2.2 W Color temperature: 3,000 K, neutral white

**3. INSTALLATION**

p: ≥ 40 mm



#### 4. DIMENSIONS (mm)



References	A	B	C	D	Ø E
CM0272	45	45	40	7	53
CM0274	45	45	38	6,5	53
CM0271	45	45	66,5	34	53

#### 5. CONNECTION

Terminal capacity: 2 x 1.5 mm<sup>2</sup> or 2 x 2.5 mm<sup>2</sup>  
 Connection type: with screws  
 Screwdriver: Flat 3 mm  
 Stripping length: 8 mm  
 Tightening torque: 0.5 Nm

#### 6. TECHNICAL CHARACTERISTICS

##### ■ 6.1 Protection index

Penetration by solid bodies/liquid: IP 20  
 Impact test: IK 04

##### ■ 6.2 Material characteristics

Cover: PC  
 Diffuser: PC  
 Halogen-free  
 UV-resistant

Self-extinguishing:  
 850°C/30 s for insulating components holding live parts in place.  
 650°C/30 s for other insulating components.

##### ■ 6.3 Electrical characteristics

Voltage: 230 V~  
 Frequency: 50 Hz  
 Current: 70 mA  
 Service life: 50,000 hours

The LED lighting products ref. CM0271 - CM0272 - CM0274, can be controlled by:

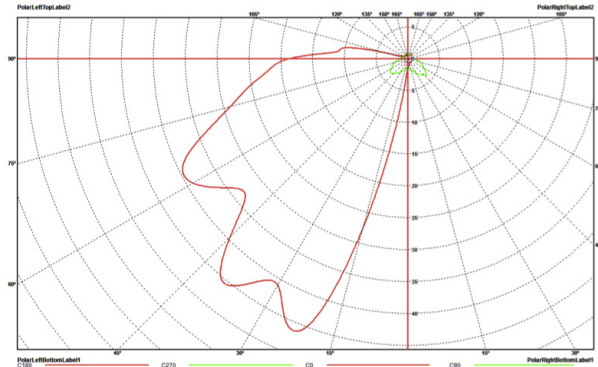
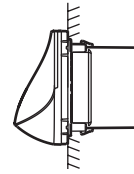
- mechanical switches,
- electronic switches with neutral such as automatic switches with neutral 3 wires,
- sensitive switch with neutral,
- controllers My Home,
- My Home radio switches with neutral ...

**Note:** the spot lights cannot be managed by a dimmer switch.

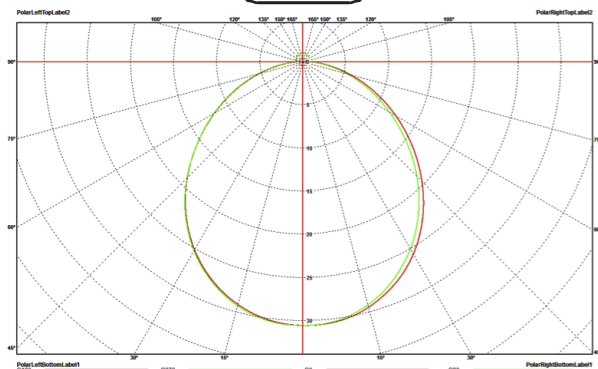
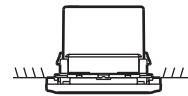
#### 6. TECHNICAL CHARACTERISTICS (continued)

##### ■ 6.4 Photoelectric characteristics

Stair light Cat. No CM0274 with cover CB0274 or CT0274



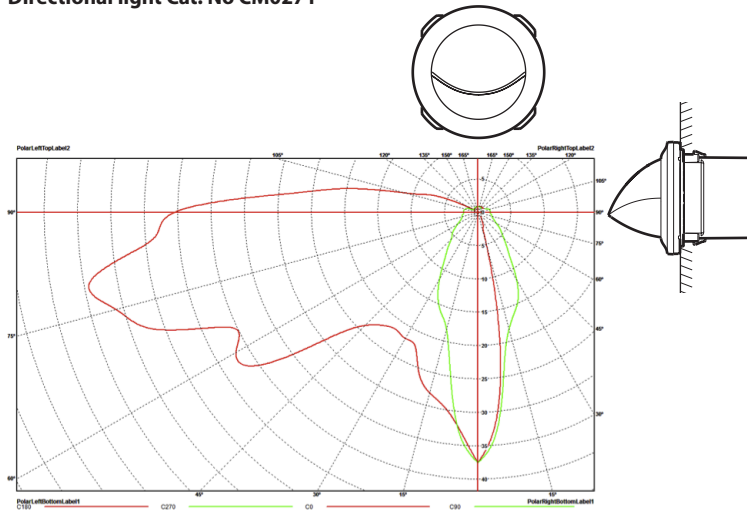
Spot light Cat. No CM0272



## 6. TECHNICAL CHARACTERISTICS *(continued)*

### ■ 6.4 Photoelectric characteristics

Directional light Cat. No CM0271



### ■ 6.5 Climate characteristics

Storage temperature: -25°C to +45°C

Usage temperature: -5°C to +35°C

## 7. CLEANING

Surface cleaning with a cloth.

Do not use: acetone, tar remover, trichloroethylene.

**Caution:** Always test before using other special cleaning products.