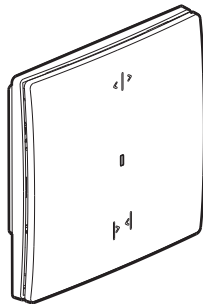
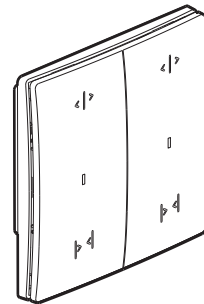


Mallia™ Senses with Netatmo Connected curtain/roller blind switches

Cat. Nos: 2 815 10DS/MB/MW - 2 815 11DS/MB/MW



2 815 11DS/MB/MW



2 815 10DS/MB/MW

1. USE

For local or remote control of curtains/roller shutters.

Can be combined with one or more wireless curtains/roller shutters controls.

Can be installed in place of an existing curtains/roller shutters switch in a flush-mounting box 25 mm deep (minimum).

The Mallia Senses with Netatmo solution is compatible with curtains, roller shutters with a mechanical or electronical stop, controlled by a standard wired switch.

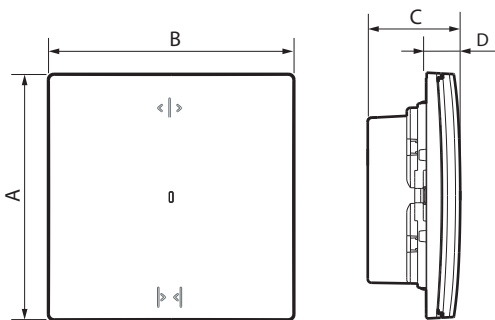
Caution: Must be connected to the neutral.

Not compatible with only radio-controlled roller shutter motors.

2. RANGE

| Description | Silver | Black | White |
|--|----------------------|----------------------|----------------------|
| Connected curtain/roller blind switches with neutral. Equipped with an LED indicator. Hidden reset button used to return to factory settings. Complete delivered with protection film and 2 screws M3.5 for BS boxes. | 2 815 11DS 1-gang | 2 815 11MB 1-gang | 2 815 11MW 1-gang |
| | 2 815 10DS 2-gang | 2 815 10DS 2-gang | 2 815 10DS 2-gang |

3. DIMENSIONS (mm)



| A | B | C | D |
|----|----|------|----|
| 86 | 86 | 32.5 | 12 |

4. CONNECTION

Terminal type : with screws

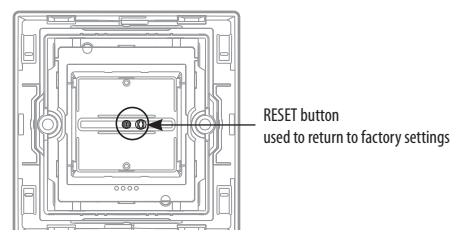
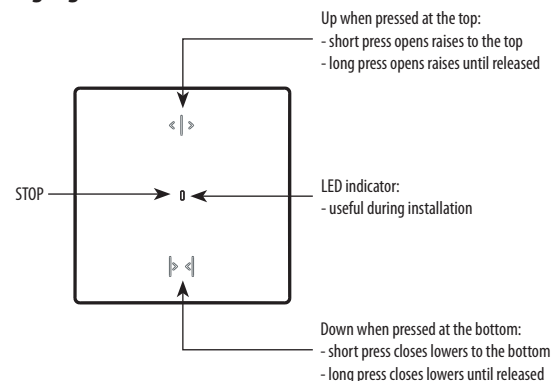
Terminal capacity: 2 x 1.5 mm² - 2 x 2.5 mm² - 1 x 4 mm²

Stripping length: 8 mm

5. OPERATION

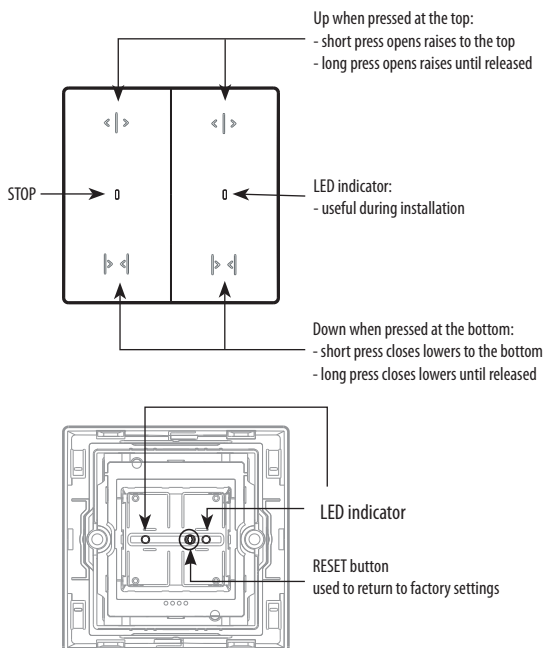
Integrated time delay for up/down inversion: 500 ms

1-gang: 2 815 11DS/MB/MW



5. OPERATION (continued)

2-gang: 2 815 10DS/MB/MW



6. TECHNICAL CHARACTERISTICS

■ 6.1 Mechanical characteristics

Protection against impacts: IK 04

Protection against solid bodies/liquids: IP 20

IP 40 mounted product

■ 6.2 Material characteristics

Cover plate: PC

Mechanism casing: PC

Halogen-free

UV resistant

Self-extinguishing:

850°C/30 s for insulating components holding live parts in place.

650°C/30 s for other insulating components.

■ 6.3 Electrical characteristics

Voltage: 110/240 V~

Frequency: 50/60 Hz

Standby consumption: 0.1 mA

Zigbee technology

Frequency bands: 2.4 GHz to 2.4835 GHz

Power level: < 100 mW

Range: 200 m of unobstructed space

10 m between products

■ 6.4 Climate characteristics

Storage temperature: 0°C to + 45°C

Usage temperature: +5°C to + 35°C

7. CARE

Clean the surface with a cloth.

Do not use acetone, tar-removing cleaning agents or trichloroethylene.

Resistant to the following products:

Hexane, methylated spirit, soapy water, diluted ammonia, bleach diluted to 10%, window-cleaning products, pre-impregnated wipes.

Caution: Always test before using special cleaning products.

8. STANDARDS AND APPROVALS

Compliant with installation and manufacturing standards.

See e-catalogue.

The undersigned, LEGRAND, declares that the radio-electric equipment type (2 815 10DS/MB/MW - 2 815 11DS/MB/MW) complies with directive 2014/53/EU.

The full text of the EU declaration of conformity is available on the following website: www.legrandoc.com