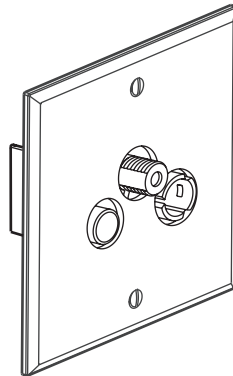


Mémoire Cristal style TV/R/SAT socket

Cat. No.: AR67077



1. USE

Television sockets with multiple TV/R/SAT outputs.
 For receiving TV, Radio and Satellite signals.
 UHD (ultra high definition) compatible and radio DAB+ (Digital Audio Broadcasting).
 Class A shielded star sockets LTE Ready (4G protected).
 Can be flush mounted in a box min. 40 mm deep.
 Supplied with finishing plates.

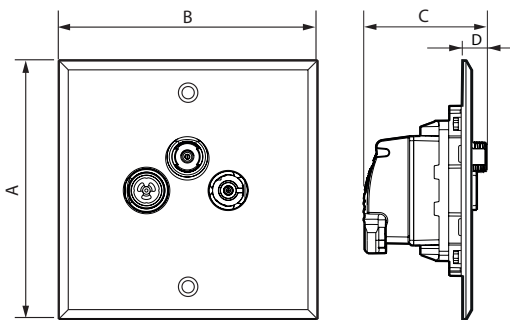
2. RANGE

ELV socket

AR67077	● Cristal	TV/R/SAT socket
---------	-----------	-----------------

Note: Other finishes and configurations are provided, see technical data sheet F02217EN.

3. DIMENSIONS (mm)



A	B	C	D
80	80	39,5	9

4. ASSEMBLY

- Do not use an electric screwdriver to tighten the screws when assembling wiring accessories.
- Take care not to overtighten the visible screws when assembling Mémoire style wiring accessories:
 - Risk of damaging the screw heads.
 - Risk of the screwdriver slipping and permanently scratching the plate.
 - Risk of the plate warping (bending), resulting in the plate not lying flat against the wall.
 - Use a flat screwdriver (4 mm wide, 0,8 mm thick) for the screws supplied on the wiring accessory.

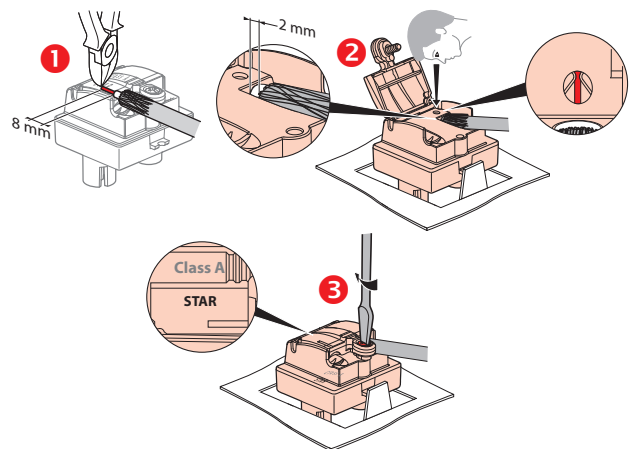
If ART d'Arnould wiring accessories are being mounted in thick surfaces such as tiles, marble, wainscot panelling with flush-mounting boxes chased deep into the wall, the whole screw length can be used to fix the wiring accessory.

To protect the products, it is essential to install them: once all surface coatings are completely dry, in a dry, non-aggressive environment, indoors only.

It is recommended that you install the plates only after the wall coatings have been completely finished (paint, fabrics, etc.).

5. CONNECTION

5.1 Connection

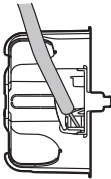
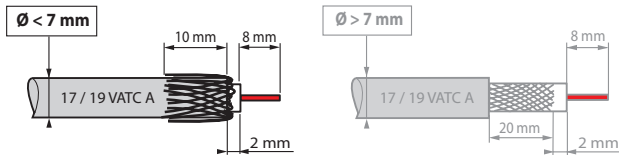


5. CONNECTION (continued)

■ 5.2 Wiring instruction

Single cable entry

17/19 VATC coaxial cable recommended



The rear connection minimises deformation of the coaxial cable, preventing loss of impedance and deterioration in performance.

6. TECHNICAL CHARACTERISTICS

■ 6.1 Mechanical characteristics

Impact test: IK 02

Penetration of solid bodies and liquids: IP 20

■ 6.2 Material characteristics

• Plate cristal: transparent PC

Subplate: Inox

Chrome screws

- Motor: - Box: Zamak
- Cover: Zamak
- Pin: bronze
- Screws: zinc-plated steel

Self-extinguishing:

850°C/30 s for insulating components holding live parts in place.

650°C/30 s for other insulating components.

■ 6.3 Electrical characteristics

Male connector \varnothing 9.52 mm (TV)

Female connector (Radio)

Female screw-type connector (SAT)

Characteristic impedance: 75 Ohm

Shielding efficiency: Class A (class A shielding is necessary to prevent interference caused by using new 3 and 4 G telephone signals, as these unwanted signals can generate on-screen pixellation or adversely affect the soundtrack).

Frequency bands: TV: 5-68 / 320-862 MHz

R: 87.5-240 MHz

SAT: 950-2400 MHz

UHD: Passage of the signals of improvement:

WCG: Wide Color Gamut

HDR: High Dynamic Range

HFR: High Frame Rate

DAB+: AAC+ codec passage defined in MPEG-4 part3

Insulation resistance: standard IEC 61169-24

Low attenuation: < 1.5 dB

■ 6.4 Climate characteristics

Storage temperature: - 10°C to + 70°C

Operating temperature: - 5°C to + 35°C

7. CARE

Clean and dust using a soft, damp cloth (dampened with water) or wipes impregnated with a product containing less than 5% alcohol and anionic surfactant.

Caution: Always test before using other special cleaning products.

Banned products:

- Solvents, various essential oils, paint, or adhesive tape,
- Scouring powders (because are abrasive),
- Products containing bleach,
- Special products for stainless steel,

Caution:

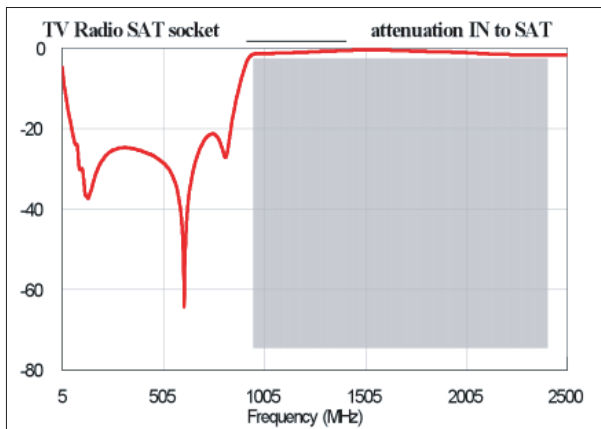
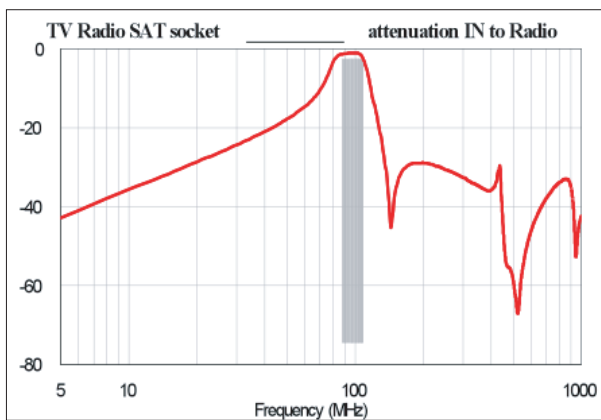
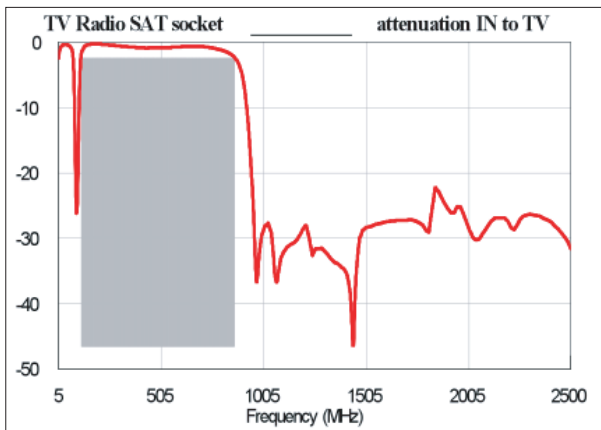
Any mechanical attack or foreign object (screwdriver, etc.) striking the surface of the plate would damage the finish and therefore also the surface treatment.

8. STANDARDS AND APPROVALS

EN 50083-2

Class A certified

9. PERFORMANCE



DAB Radio TV sockets

