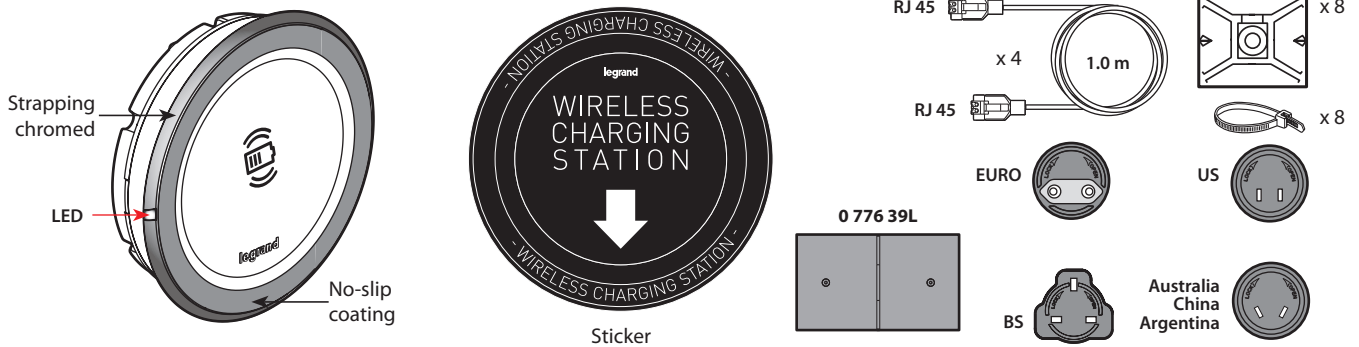


Mosaic™ Kits 4 recessed 15 W wireless chargers for furniture

Cat. No(s): 0 776 45L/46L/47L/48L/49L



1. USE



Can be used to fully charge or top up a smartphone equipped with an induction receiver.

Designed for mounting horizontally on furniture.
 Suitable for use in passageways or transit areas, offices, on kitchen worktops.
 Does not interfere with other wireless transmissions (Zigbee, TNT, GSM, 4G, etc).

Wireless charger equipped with an 8 cm² induction type antenna for quick pairing with the smartphone.

Surface with non-slip coating to hold the terminal safely in place during charging.

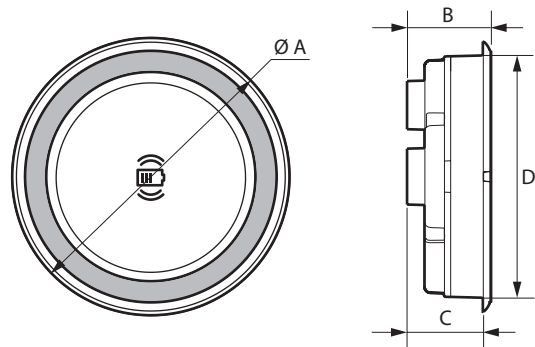
2. RANGE

Kit 4 chargers for furniture:

- Delivered with power Cat. No 0 776 39L (110-240 V~ - 100 W)
 - 4 RJ45/RJ45 cord (1.0 m), (compatible with RJ45 cord. Cat 5 or Cat. 6 length 0.5 to 10 m).
 - 8 adhesive bases + 8 cable ties
 - 4 identification stickers for use in public spaces
- Chargers equipped with one RJ45 input and one output for star or series connection.

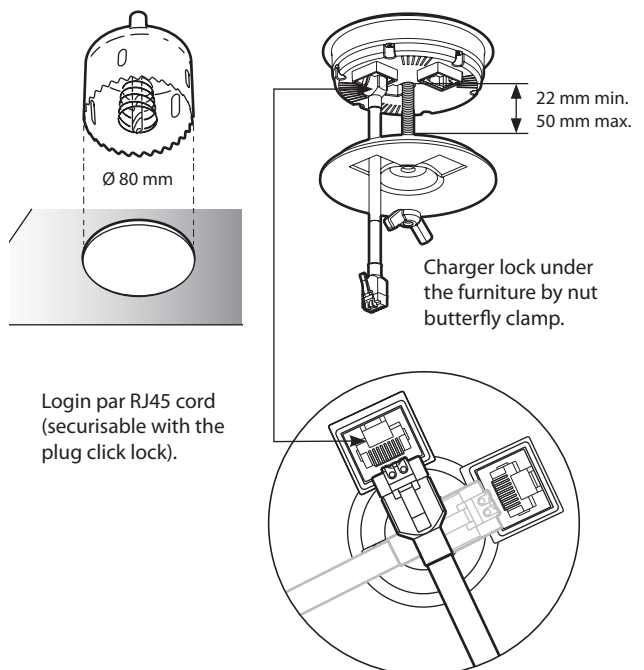
0 776 45L	Kit 4 chargers Alu/strapping chromed Supplied with power supply Cat. No 0 776 39L to be wired, with 2 x 2.5 mm ² terminal block that can be connected for other power supplies on the same line.
0 776 46L	Kit 4 chargers Alu/strapping chromed Supplied with power supply Cat. No 0 776 39L fitted with a cable (2.50 m) and a 2P EURO plug.
0 776 47L	Kit 4 chargers Alu/strapping chromed Supplied with power supply Cat. No 0 776 39L fitted with a cable (2.50 m) and a 2P BS plug.
0 776 48L	Kit 4 chargers Alu/strapping chromed Supplied with power supply Cat. No 0 776 39L fitted with a cable (2.50 m) and a 2P US plug.
0 776 49L	Kit 4 chargers Alu/strapping chromed Supplied with power supply Cat. No 0 776 39L fitted with a cable (2.50 m) and a 2P AU-CH-AR plug.

3. DIMENSIONS (mm)



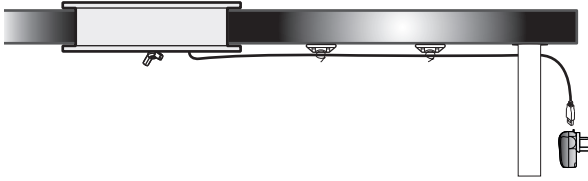
Ø A	B	C	D
87	27	24.5	77.5

4. INSTALLATION



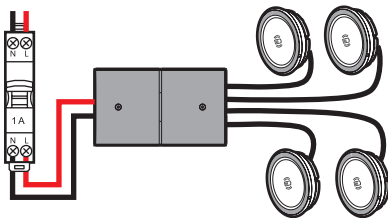
Kits 4 recessed 15 W wireless chargers for furniture

4. INSTALLATION (continued)



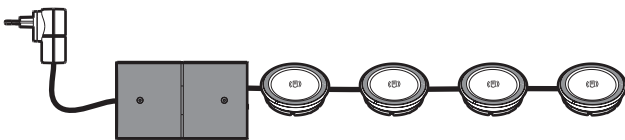
Installation suited to furniture configurations, from a panel line with tap-off possibility or via a 2P plug:

■ Star cabling



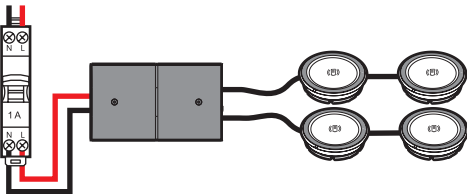
■ Series cabling

Fiche 2P



■ Mix star + series cabling

230 V



5. TECHNICAL CHARACTERISTICS

■ 5.1 Mechanical characteristics

Impact resistance: IK 08

Resistance to ingress of solid bodies and liquids: IP44 for upper part installed on furniture

■ 5.2 Material characteristics

Wireless charger: ABS

Strapping chromed

No-slip coating

Halogen-free

UV-resistant

Self-extinguishing:

850°C/30 s for insulating components holding live parts in place

650°C/30 s for other insulating components

5. TECHNICAL CHARACTERISTICS (continued)

■ 5.3 Electrical characteristics

Charger

Nominal input voltage	48.0 V
Connection	RJ 45 cord
Input current	0.5 A
Power	15.0 W
Standby consumption	0.01 A
Energy efficiency	> 75 %
Protection class	II - Low voltage

LED indication

Indication	Red LED	Green LED
Power ON (Once plug-in)	Flash 3 times (bright 0.5 s)	OFF
Standby	OFF	OFF
Charging on progress	ON	OFF
Charge complete	OFF	ON
Charging error/FOD detection*	Fast flashing	OFF

* Ex.: protective back cover not compatible

* Insufficient smartphone alignment

* Incompatible wireless charging accessory (not Qi certified)

100 W power supply

Voltage: 110 - 240 V~

Power: 100 W

■ 5.4 Average charging time for a smartphone equipped with an induction receive

- 80 % charge < 1 h 00

- 100 % charge < 1 h 30

■ 5.5 Climate characteristics

Storage temperature: - 20°C to + 70°C

Usage temperature: + 5°C to + 45°C

6. CLEANING

Surface cleaning with a cloth.

Do not use acetone, tar remover, trichloroethylene..

Suitable for cleaning using usual detergents, hydroalcoholic gels.

Resists soiling such as coffee and soda.

Caution: Always test before using other special cleaning product.

7. STANDARDS AND APPROVALS



WPC Qi

Compliant with installation and manufacturing standards.

See e.catalogue.