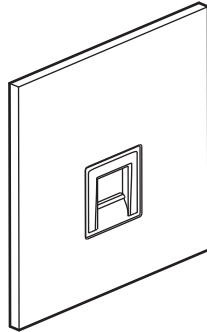


Epure Style Telephone sockets

Cat. No(s): AR68046/47 - AR68146/47 - AR68246/47
 AR68346/47 - AR68446/47



1. USE

Telephone sockets.
 For flush-mounting, back box to be min. 35 mm deep.
 Fixing with screws.

2. RANGE

UK master

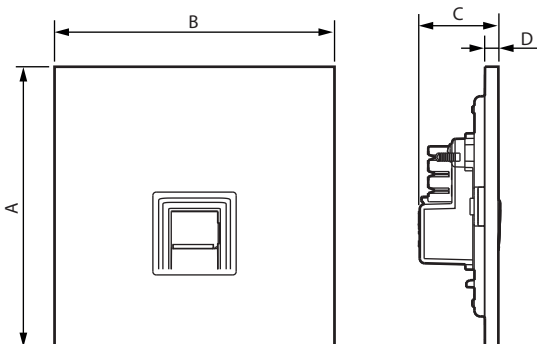
AR68046	<input type="radio"/> Configured Cat. No
AR68146	<input type="radio"/> Brushed steel
AR68246	<input type="radio"/> Brushed gold
AR68346	<input type="radio"/> Satin white
AR68446	<input type="radio"/> Matt black

UK secondary

AR68047	<input type="radio"/> Configured Cat. No
AR68147	<input type="radio"/> Brushed steel
AR68247	<input type="radio"/> Brushed gold
AR68347	<input type="radio"/> Satin white
AR68447	<input type="radio"/> Matt black

Note: Other finishes and styles are provided, see technical data sheet F02217EN/01.

3. OVERALL DIMENSIONS (mm)



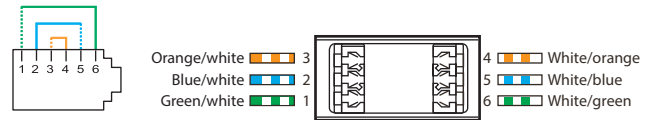
Cat. Nos	A	B	C	D
AR68x46/47	86	86	25	4.5

4. DISMANTLING

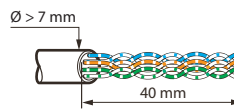
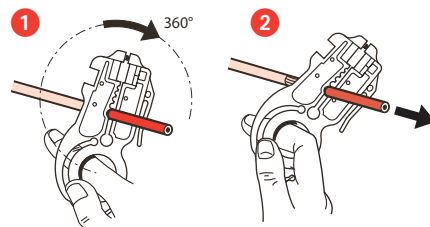
The plates can be dismantled by inserting the tip of a screwdriver in a purpose-designed notch on the sides of the plate and using it as a lever to unclip it from the fixing points.
 Once the plate has been lifted off the wall slightly, just slide your fingers between the plate and the wall to gently remove the plate.
 Take care not to pull too hard on the plate, to avoid breaking the fixing clips.

5. CONNECTION

Takes the following plugs: RJ 11 (4 contacts), RJ 12 (6 contacts)



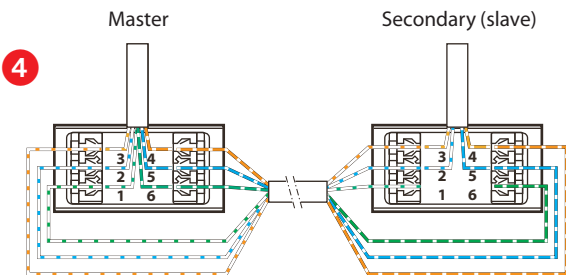
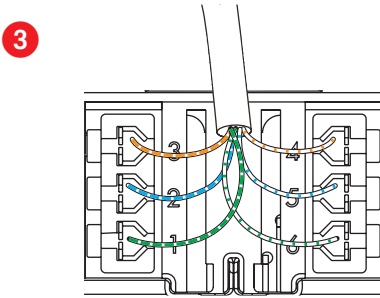
With 360° shielding



Permissible conductors:

- Single-core: 0.5 to 0.65 mm - AWG 22 to 25
- Multicore: AWG 26
- Polyethylene conductor insulation: maximum \varnothing on insulation 1.58 mm

5. CONNECTION (continued)



Spreading pairs at 90° to the cable ensures the best possible performance.

6. TECHNICAL CHARACTERISTICS

■ 6.1 Mechanical characteristics

Impact test: IK 02

Ingress of solids/liquids: IP20

■ 6.2 Material characteristics

• Plates:

Decorative brass: AR68146/47 - AR68246/47

Brass + paint: AR68346/47 - AR68446/47

Halogen-free

UV-resistant

• Support: steel with surface treatment

• Motor:

Contacts: silver brass

Terminals: white plastic

Mechanism housing: PP

Self-extinguishing: 650°C/30 s

■ 6.3 Climate characteristics

Storage temperature: - 10°C to + 70°C

Usage temperature: - 5°C to + 35°C

7. CARE

■ 7.1 Installation

To protect the products, it is essential to install them:

- once all surface coatings are completely dry,
- in a dry, non-aggressive environment,
- indoors only.

It is recommended that you install the plates only after the wall coatings have been completely finished (paint, fabrics, etc.).

■ 7.2 Instructions

Clean and dust using a soft, damp cloth (dampened with water) or wipes impregnated with a product containing less than 5% alcohol and anionic surfactant.

■ 7.3 Banned products

- Solvents, various essential oils, paint, or adhesive tape,
- Scouring powders (because are abrasive),
- Products containing bleach,
- Special products for stainless steel,
- Renovators (because they often contain abrasives and chemical agents),
- Pplashes or fumes from floor, paint, or wood stripping products, etc.

Caution: Always test before using other special cleaning products. Any mechanical attack or foreign object (screwdriver, etc.) striking the surface of the plate would damage the finish and therefore also the surface treatment.

8. STANDARDS AND APPROVALS

Compliant with installation and manufacturing standards.
See e.catalogue.