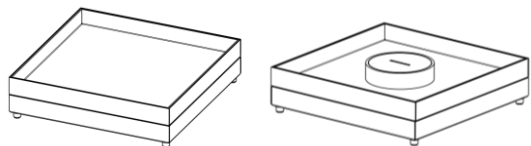


IP44 tile floor boxes

Cat no(s) : 0 896 04 - 0 896 87 - 6 896 22/23 - 6 896 57/58 -
6 896 62



CONTENTS

PAGE

1.Range	1
2.Installation	2-4
3.Technical characteristics	5-6
4.Material characteristics	6

1. RANGE

Tile floor boxes let you:

- Provide power and data supply to your workstations via the floor
- Have an ideal solution for a concrete floor
- Install tiling of different thicknesses and other floor coverings
- Fit mounting supports for Mosaic wiring devices.

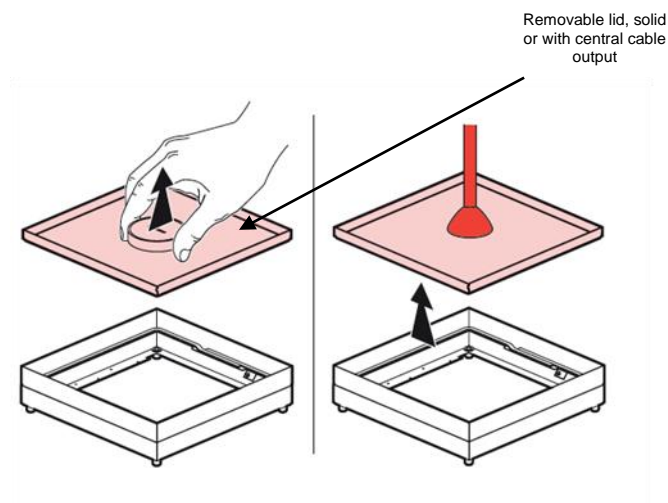
The range covers 2 products:

- IP 44 version with removable lid
- IP 44 version with removable lid equipped with a central cable output

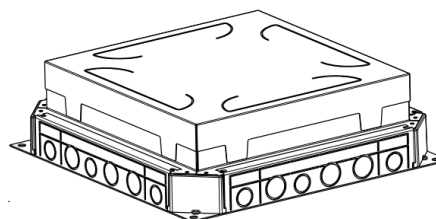
References	Description
0 896 04	Flush-mounting box
6 896 22	IP 44 tile floor box (tiling 18 to 24 mm thick)
6 896 23	IP 44 tile floor box with central output (tiling 18 to 24 mm thick)
6 896 58	Mounting support for 8 horizontal modules
6 896 62	Solid support (blanking plate)
6 896 57	Mounting support for 8 vertical modules
0 896 87	Cable exit accessory

1. RANGE (cont.)

Floor boxes cat. nos 6 896 22/23



Flush-mounting box cat. no 0 896 04

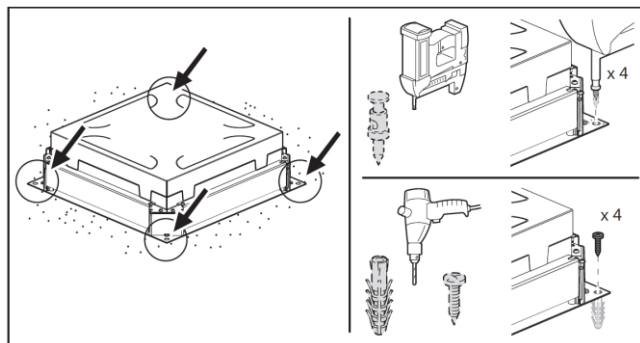


2. INSTALLATION : One installation method

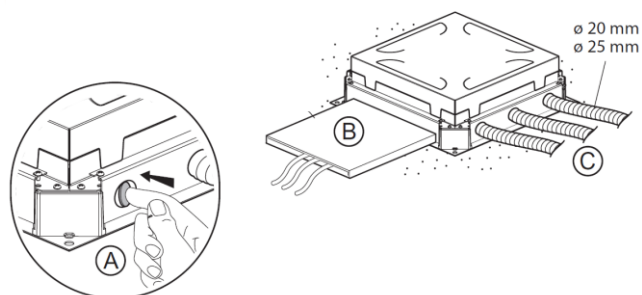
In concrete only, using flush-mounting box, cat. no 0 896 04. Allow for a height from 65 to 90 mm.

2.1 Installation of flush-mounting box, cat. no 0 896 04

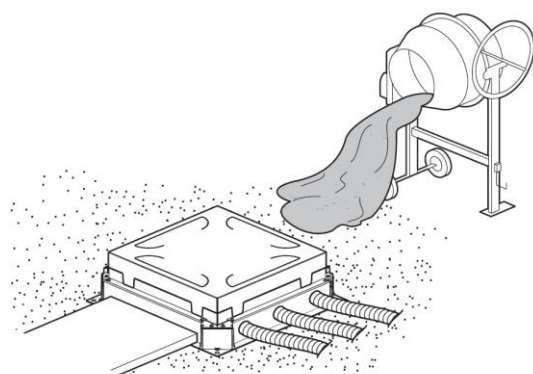
1) Secure the flush-mounting box to the slab at all four corners, by anchoring or dowelling



2) Install ducts before pouring the slab

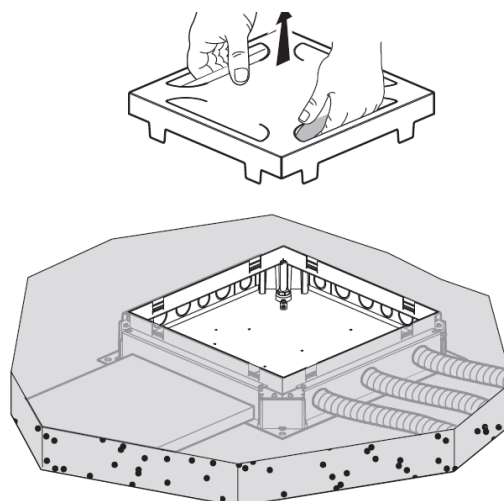
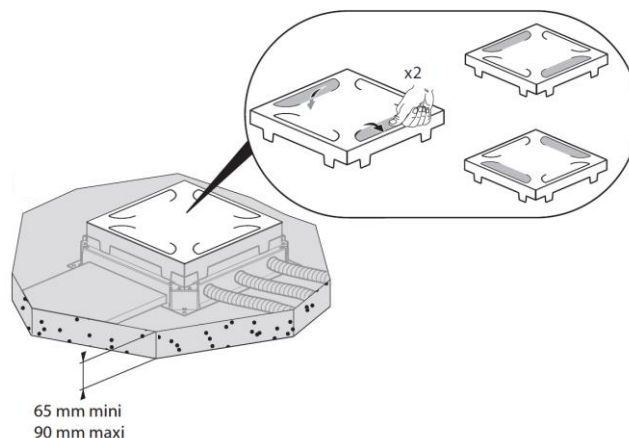


3) Pour the concrete slab



2. INSTALLATION (cont.)

4) When the concrete slab is dry, remove the mask from the top of the flush-mounting box before fitting the floor box

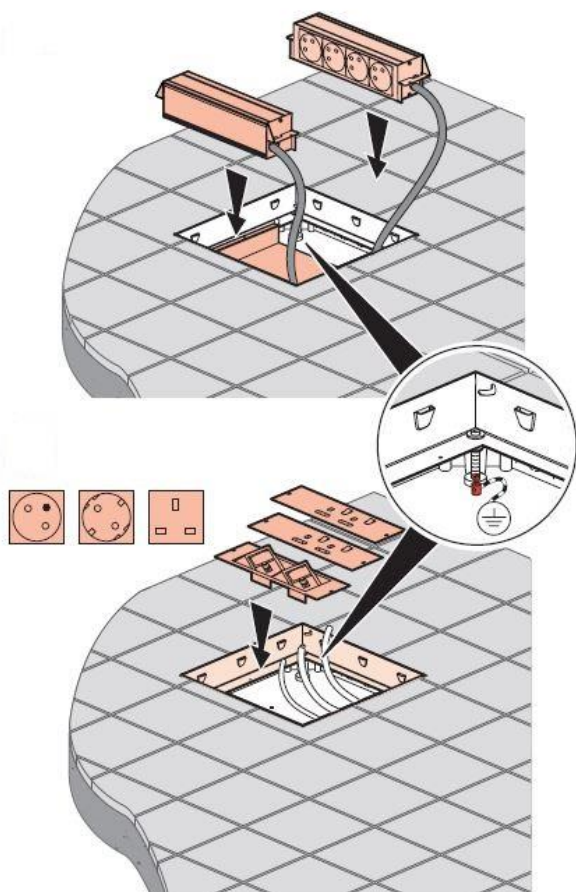


2. INSTALLATION (cont.)

2.3 Installation of wiring devices

2.3.2 Size 45 mm sockets:

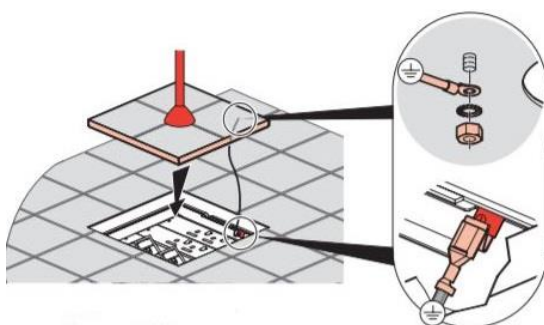
- vertical = 2 x 8 modules
- horizontal = 3 x 8 modules



2.3.3 Cable exit accessory cat. no 0 896 87

Tile floor box, cat. no 6 896 22

- Not equipped with a cable output. Requires removal of the lid during use.



2. INSTALLATION (cont.)

2.3 Installation of wiring devices

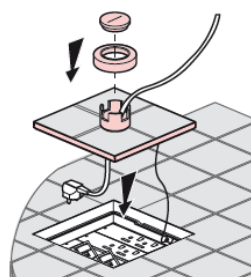
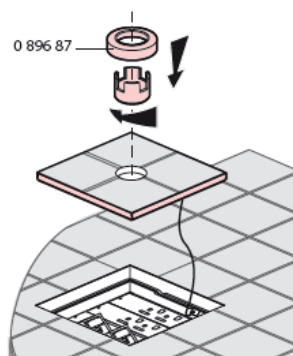
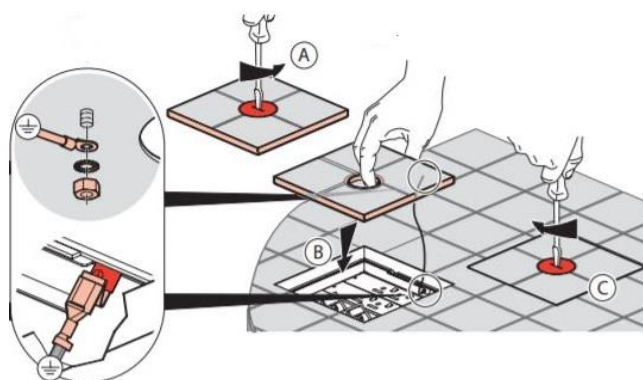
2.3.3 Cable exit accessory cat. no 0 896 87

Tile floor box, cat. no 6 896 23

- Equipped with a central threaded cable output for closing the box when sockets are in use.

Caution: In this scenario, there is no IPXX waterproofing.

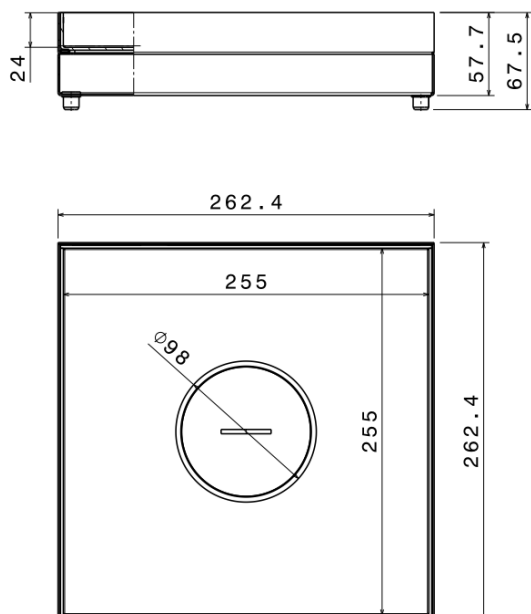
For waterproofing with socket in use, use accessory Cat. No. 0 896 87



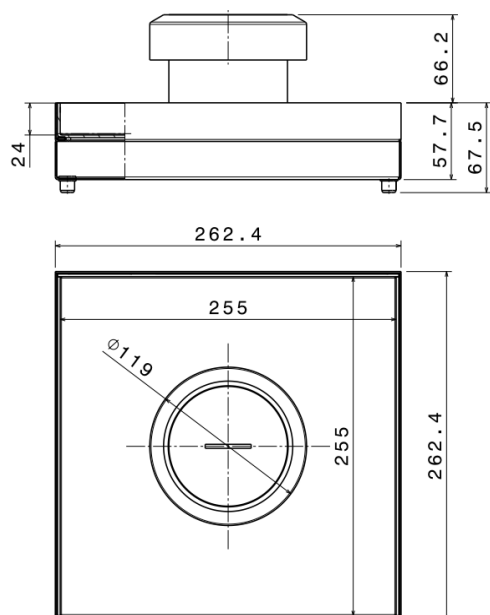
3. TECHNICAL CHARACTERISTICS

3.1 Overall dimensions

3.1.1 IP 44 tile floor box with central cable exit cat. no 6 896 23 or plain cover cat. no 6 896 22



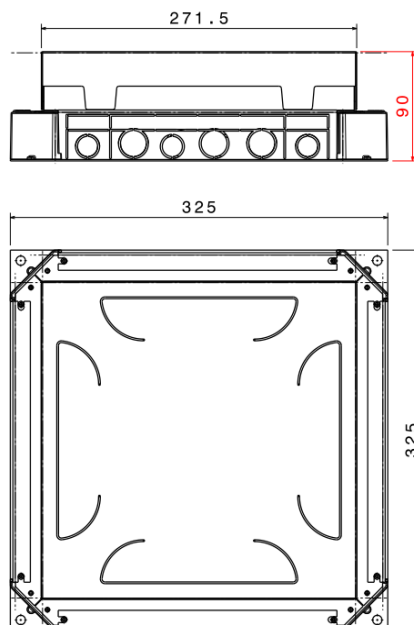
3.1.2 IP 44 tile floor box with cable output accessory cat. no 0 896 87 to be added (non supplied with cat. no 6 896 23)



3. TECHNICAL CHARACTERISTICS (cont.)

3.1 Overall dimensions

3.1.3 Flush-mounting box cat. no 0 896 04



3. TECHNICAL CHARACTERISTICS (cont.)

Classification of floor boxes and enclosures for electrical wiring devices in accordance with the IEC 60670-1 and IEC 60670-23 standards.

7.1 Nature of material	Metal
7.2 Mounting mode	Flush mounted, semi-flush mounted in non-flammable floors
	Appropriate location for installation in concrete during the pouring phase
	Floor boxes and enclosures installed in floors subject to dry treatment (Cat. No. 0 88 056)
	Floor boxes and enclosures installed in floors subject to wet treatment (Cat. No. 6 896 22/23)
7.3 Types of inlet	No inlets. The inlet openings will be created during installation
7.4 Mounting modes	Without mountings
7.5 Minimum and maximum temperatures during installation	-5°C to +60°C
7.6 Maximum temperature during the concrete pouring phase	+60°C
7.8 Arrangements to secure devices to boxes	Boxes intended to be fitted with screws
7.101 Type of lid	Enclosure with detachable lid
15.101 Ability to withstand a vertical load applied via a small surface	500 N

Safety: check that the system is earthed

Earthing arrangement: resistance less than 0.05 Ω

Impact resistance: IK 08

Resistance to vertical load according to the standard EN 50085-2-2 (flexion < 6mm) :

- **5000N** to load applied through large surface area (diameter 130mm)
- **2000N** to load applied through small surface area (diameter 11mm)

Degrees of protection provided by the floor box with lid closed: IP44.

Cleaning: do not use abrasive products or detergents.

The visible parts of the floor box must be cleaned using a damp cloth only:



4. MATERIAL CHARACTERISTICS

The metal floor box is made of:

- Galvanised steel (DX51D Z275 MAC)
- 304L stainless steel

The metal flush-mounting box is made of:

- Galvanised steel (DX51D Z275 MAC)
- Zamak