

1. USE

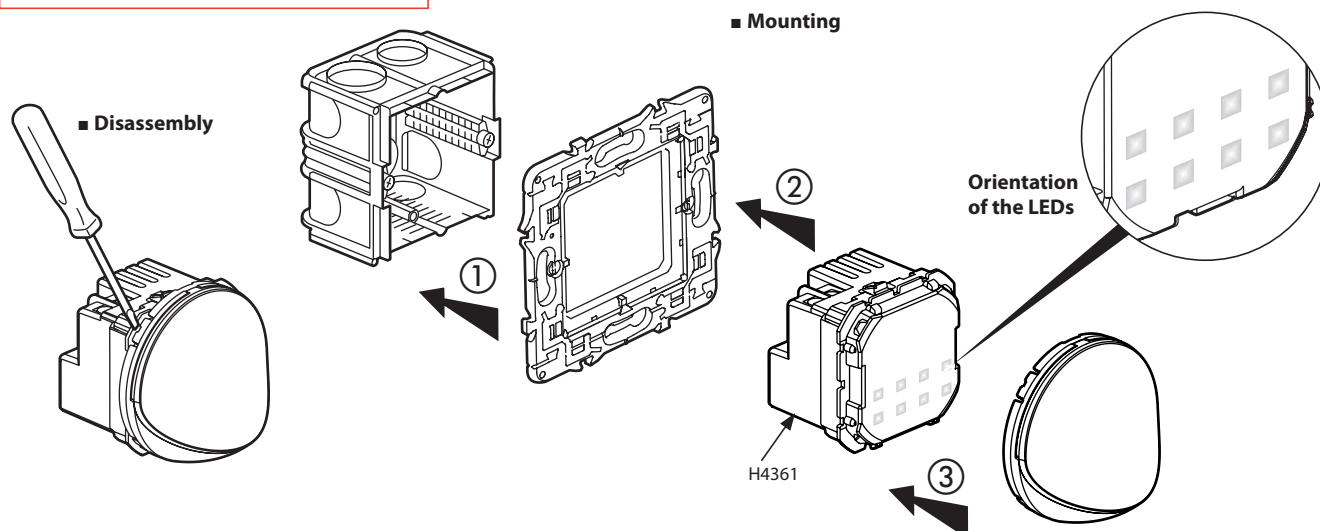
These items can be used to enrich the lighting installation in residential as well as for tertiary market applications. They are particularly suitable to satisfy specific needs for directional lighting.

2. RANGE

References	Colours	Description	General characteristics	Current	Life
HD4362 HC4362 HS4362	○ White ● Alu ● Anthracite	Reading lamp: particularly suitable for bedroom and hotels applications.	Luminous flux: 110 lm - Power input: 3.3 W Color temperature: 3,000 K, neutral white	23 mA	40 000 hours
H4361	○ White ● Alu ● Anthracite	Directional stepmarker (supplied with aesthetic covers): to enlight household ambience or to create a light path.	Luminous flux: 70 lm with cover Power input: 2.2 W Color temperature: 3,000 K, neutral white	70 mA	50 000 hours
H4360	○ White ● Alu ● Anthracite	Rotating lamp 360° (supplied with aesthetic covers): to enlight a worktop or satisfy specific lighting needs.	Luminous flux: 70 lm - Power input: 2.8 W Color temperature: 3,000 K, neutral white	70 mA	50 000 hours

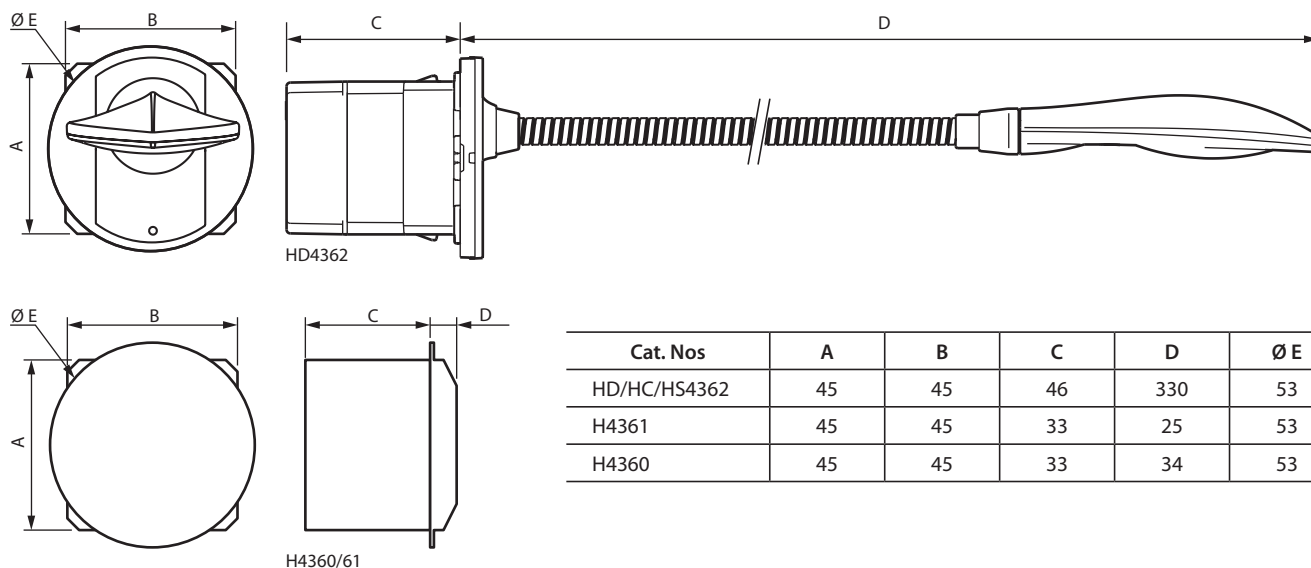
3. PREPARATION

Min. box depth : 40 mm for spots
50 mm for the reading light



Note: Use the same principle for mounting the rotating lamp 360° (H4360)

4. OVERALL DIMENSIONS (mm)



5. CONNECTION

Terminal capacity (spot light): 2 x 1.5 mm² or 2 x 2.5 mm²
 Terminal capacity (reading light): 1 x 1.5 mm² or 1 x 2.5 mm²
 Connection type: with screws
 Screwdriver: Flat 3 mm
 Stripping length: 8 mm
 Tightening torque: 0.5 Nm

6. TECHNICAL CHARACTERISTICS

■ 6.1 Protection index

Penetration by solid bodies/liquid: IP 20 unassembled
 IP 40 assembled

Impact test: IK 04

■ 6.2 Material characteristics

Material:

- Cover: PC
- Diffuser: PC
- Painted cover, painted head reading light: ABS
- Flexible: steel

Self-extinguishing:

- + 850° C / 30 s for insulating parts holding live parts in place.
- + 650° C / 30 s for other parts made of insulating materials.

Halogen free.

UV resistant.

■ 6.3 Electrical characteristics

Current: 230 VAC

Frequency: 50 Hz

Product tested to 40,000 operations switching ON and OFF.

The LED lighting products ref. H4360/61, can be controlled by:

- mechanical switches,
- electronic switches with neutral such as automatic switches with neutral 3 wires,
- sensitive switch with neutral,
- controllers My Home,
- My Home radio switches with neutral ...

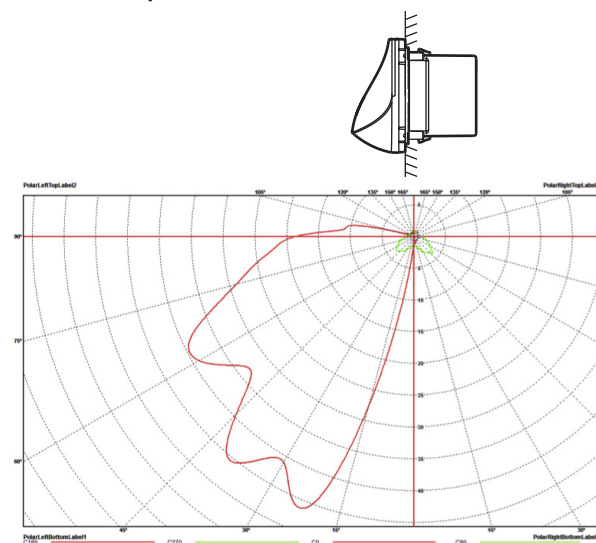
Note: the spot lights cannot be managed by a dimmer switch.

Reading lights have their own controls "ON/OFF/DIMMING" integrated.

6. TECHNICAL CHARACTERISTICS (continued)

■ 6.4 Photoelectric characteristics

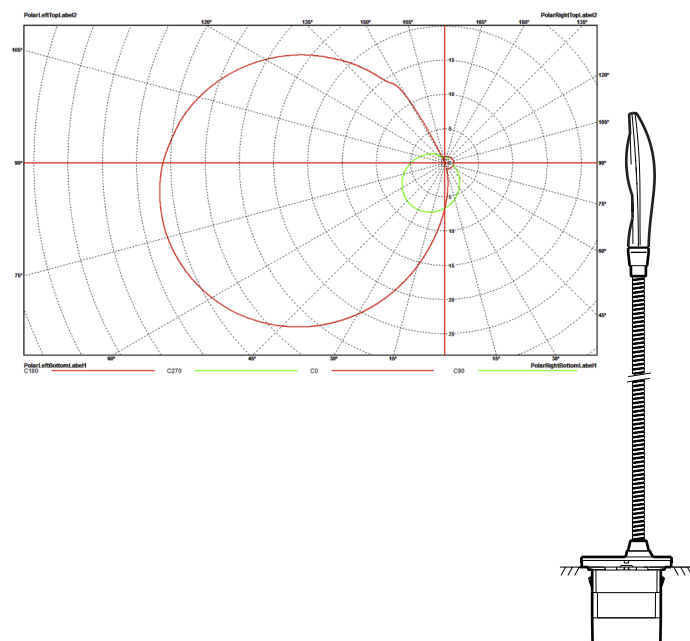
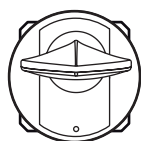
Directional stepmarker Cat. No H4361



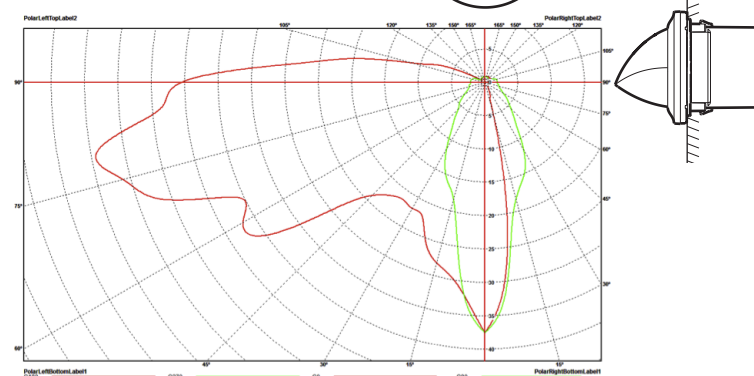
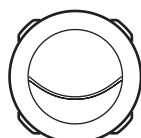
6. TECHNICAL CHARACTERISTICS *(continued)*

■ 6.4 Photoelectric characteristics

Reading lamp Cat. Nos HD/HC/HS4362



Rotating lamp 360° Cat. No H4360



■ 6.5 Climatic characteristics

Storage temperature: - 25° C to + 45° C

Use temperature: - 5° C to + 35° C

7. CLEANING

Surface cleaning with a cloth.

Do not use: acetone, tar remover, trichloroethylene.

Caution: A preliminary test should be carried out if other specific cleaning products are to be used.

8. STANDARDS AND APPROVALS

IEC 60598-1
IEC 60598-2-2
IEC 61547
IEC 60669-2-1