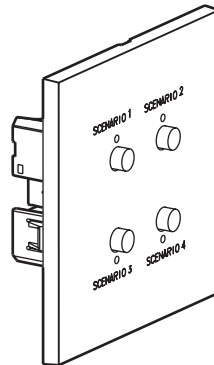


Epure Style Control 4 scenarios

Cat. No(s): AR-67388 - AR-67488 - AR-67588 - AR-67688
 AR-67788 - AR-67888 - AR-67988



1. USE

Device with 4 push buttons and 4 bi-colour LEDs (blue/red) on the face-plate, equipped with 2 independent relays for managing:

- 2 loads or 2 groups of loads (independent)
- 1 load (roller blind).

2. RANGE

Control 4 scenarios

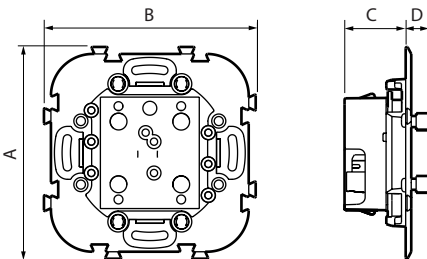
AR-67488	○ Brushed steel	ART ESCAB MH
AR-67588	● Satin steel	ART ESCAS MH
AR-67688	○ Mirror-polished steel	ART ESCAM MH
AR-67788	● Mirror-polished gold	ART ESCOM MH
AR-67388	● Bronze	ART ESCBZ MH
AR-67888	● Matt black	ART ESCNM MH
AR-67988	○ Satin white	ART ESCBS MH

Note: Other finishes and configurations are provided, see technical data sheet F02217EN/01.

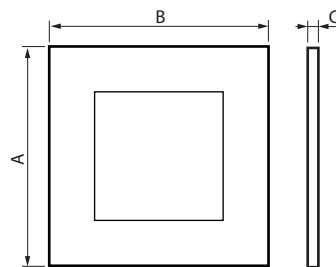
3. POSITIONING

Recommended installation height: 150 cm from the ground

4. DIMENSIONS (mm)



4. DIMENSIONS (mm) (continued)



	A	B	C	D
Mechanism	76	76	22	8
Plate	80	80	5	-

5. INSTALLATION

ART d'Arnould electrical wiring accessories are supplied with long fixing screws which can be cut at several points to adapt the screw length to the box flush-mounting depth in the wall.

If ART d'Arnould wiring accessories are being mounted in thick surfaces such as tiles, marble, wainscot panelling with flush-mounting boxes chased deep into the wall, the whole screw length can be used to fix the wiring accessory.

If ART d'Arnould wiring accessories are being installed in walls with non-projecting flush-mounting boxes (masonry walls, dry partitions), the screws which can be cut at several points to shorten the thread.

To protect the products, it is essential to install them: once all surface coatings are completely dry, in a dry, non-aggressive environment, indoors only.

It is recommended that you install the plates only after the wall coatings have been completely finished (paint, fabrics, etc.).

Dismantling:

The plates can be dismantled by inserting the tip of a screwdriver in a purpose-designed notch on the sides of the plate and using it as a lever to unclip it from the fixing points.

Once the plate has been lifted off the wall slightly, just slide your fingers between the plate and the wall to gently remove the plate.

Take care not to pull too hard on the plate, to avoid breaking the fixing clips.

6. CONNECTION

BUS connector.

7. TECHNICAL CHARACTERISTICS

7.1 Mechanical characteristics

Impact test: IK 02
Ingress of solids/liquids: IP 21

7.2 Material characteristics

Sub-plate: Stainless steel

Plate:

- Décorative brass + varnish
Cat. Nos.: AR-67388 - AR-67488 - AR-67588
- Decorative brass
Cat. Nos.: AR-67688 - AR-67788
- Brass + paint
Cat. Nos.: AR-67888 - AR-67988

Self-extinguishing:





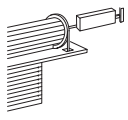
850°C/30 s for insulating components holding live parts in place
650°C/30 s for other insulating components

7.3 Electrical characteristics

Power supply: 18 - 27 Vdc

Consumption: 14 mA

Load absorption/capacity controlled by the output

Incandescent lamps and halogen lamps		Lamps with ferromagnetic transformer			
					
240 Vac	460 W	2 A	460 VA	4 A cos. φ 0.5	
Linear fluorescent lamp and electronic transformer		Compact fluorescent lamps and LED		Geared motors for roller blinds	
					
70 W	0.3 A	70 W	2 lamps max.	460 W	2 A

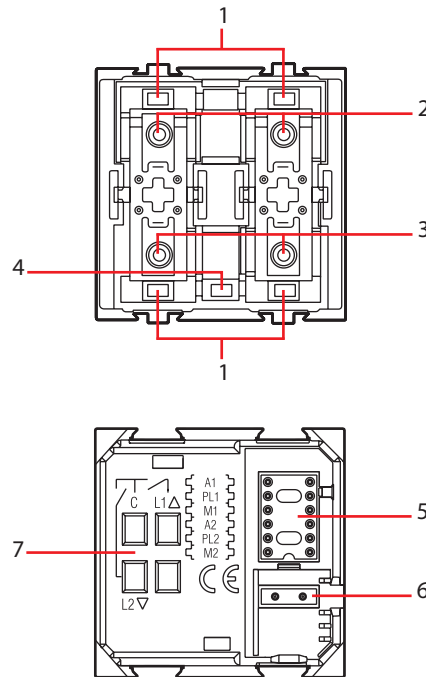
7.4 Climate characteristics

Storage temperature: - 5°C to + 45°C

Usage temperature: 0°C to + 35°C

7. TECHNICAL CHARACTERISTICS (continued)

7.5 Functions



Key:

1. LED: blue for motor stopped, or blue + red for motor running, blue for light OFF, and blue + red for light ON
2. Top push-button
3. Bottom push-button
4. Push-button to adjust the brightness of the LEDs or to disable them
5. Codes section (NB: This should only be used in the My Home system with a physical configuration)
6. BUS
7. Terminal block (3 x 2.5 mm²) for load connections
8. Possible functions (see data sheet LG00411_B_EN)

8. CARE

Clean and dust using a soft, damp cloth (dampened with water) or wipes impregnated with a product containing less than 5% alcohol and anionic surfactant.

Caution: Always test before using other special cleaning products.

Banned products

- Solvents, various essential oils, paint, or adhesive tape,
- Scouring powders (because are abrasive),
- Products containing bleach,
- Special products for stainless steel,
- Renovators (because they often contain abrasives and chemical agents),
- Splashes or fumes from floor, paint, or wood stripping products, etc.

Caution:

Any mechanical attack or foreign object (screwdriver, etc.) striking the surface of the plate would damage the finish and therefore also the surface treatment.

9. STANDARDS AND APPROVALS

This device has been awarded the CE mark.

Compliant with installation and manufacturing standards.
See e.catalogue.