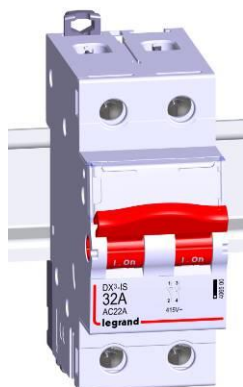


Isolating switch DX³-IS

1 module per pole, from 32 to 63A

Cat N°(s) : 4 065 00, 4 065 01, 4 065 02, 4 065 09, 4 065 10, 4 065 11,
4 065 18, 4 065 19, 4 065 20



CONTENTS	Page
1. Description, use	1
2. Range	1
3. Overall dimensions	1
4. Preparation - Connection	1
5. General Characteristics.....	3
6. Compliances and approvals	4
7. Auxiliaries and accessories.....	4

1. DESCRIPTION - USE

Isolating switch ensuring the breaking and the isolation of electrical circuits.

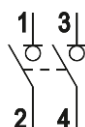
Fully visible breaking indication.

2. RANGE

Polarity and symbols :

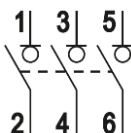
2-poles 415V~

32A
40A
63A



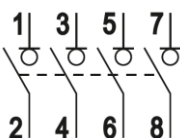
3-poles 415V~

32A
40A
63A

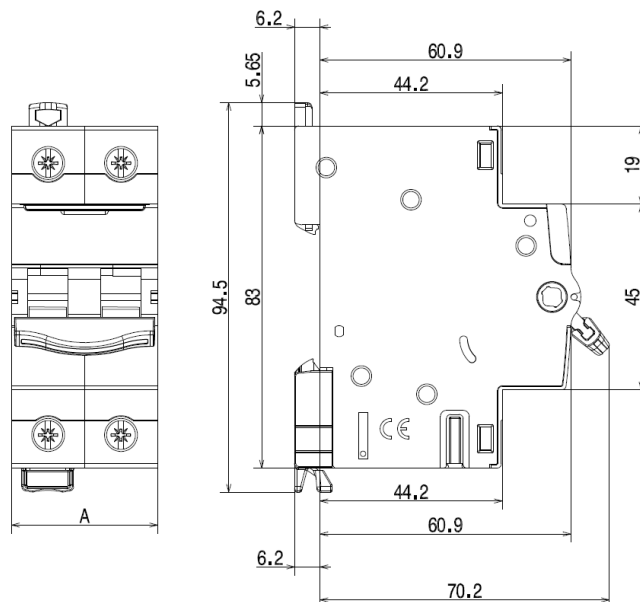


4-poles 415V~

32A
40A
63A



3. OVERALL DIMENSIONS



	2-poles	3-poles	4-poles
A (mm)	35.4	53.1	70.8

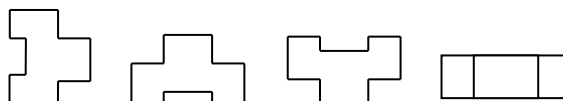
4. PREPARATION - CONNECTION

Mounting :

. On symmetrical EN 60.715 rail or DIN 35 rail.

Operating positions:

.Vertical Horizontal Upside down On the side



Power supply:

. Either from the top or the bottom.

Isolating switch DX³-IS

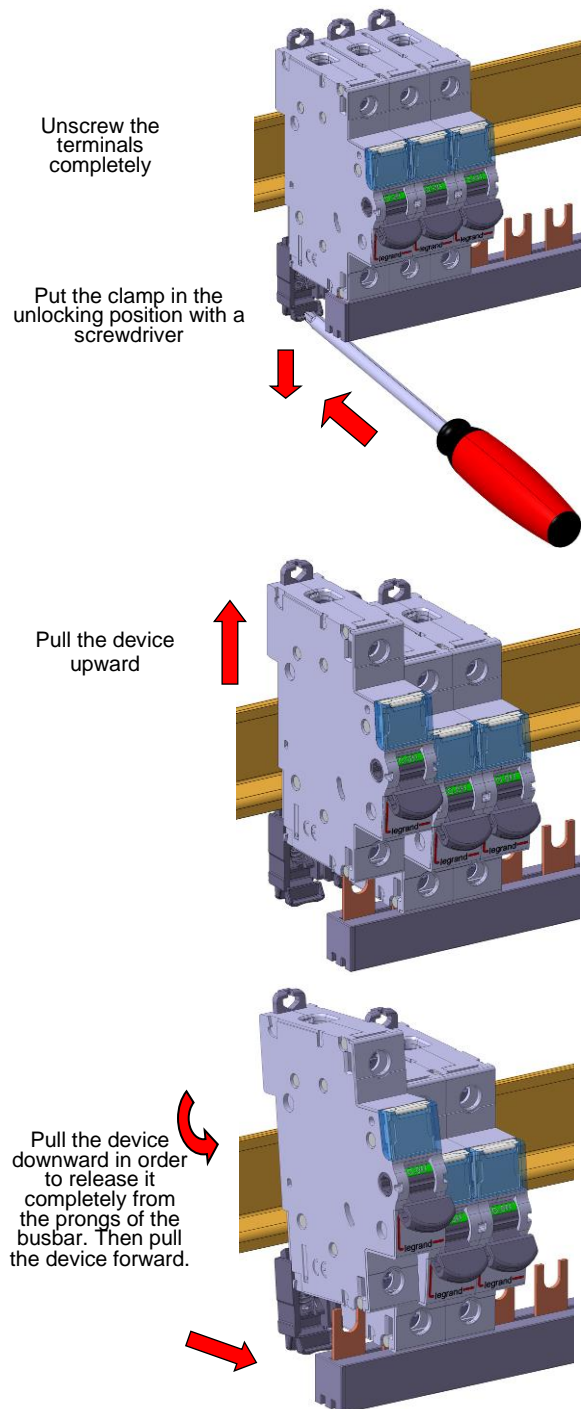
1 module per pole, from 32 to 63A

Cat N°(s) : 4 065 00, 4 065 01, 4 065 02, 4 065 09, 4 065 10, 4 065 11, 4 065 18, 4 065 19, 4 065 20

4. PREPARATION - CONNECTION (continued)

Module maintenance :

- . Isolating switches may be replaced in the middle of a row supplied with busbars without disconnecting the other products.
- This method is available for the 2-poles, 3-poles, 4-poles.



Connection:

- . Terminals protected against direct contact IP20, wired device.
- . Cage terminals, with release and captive screws.
- . Terminals fitted with shutters preventing a cable being placed under the terminal, with the terminal partly open or closed.
- . Alignment and spacing of the terminals permitting connection with the other products in the range via prong supply busbars.

4. PREPARATION - CONNECTION (continued)

- . Terminal depth : 14 mm.
- . Screw head: mixed, slotted and Pozidriv no. 2.
- . Tightening torques:
 - Min: 2 Nm.
 - Recommended: 3 Nm.
 - Max: 3.5 Nm.

Conductor type:

- . Copper cable or supply busbar.
- . Cable cross-section:

	Without ferrule	With ferrule
Rigid cable	1 conductor 1.5 to 35 mm ² 2 conductors 1.5 to 16 mm ²	
Flexible cable	1 conductor 1.5 to 25 mm ² 2 conductors 1.5 to 10 mm ²	1 conductor 1.5 to 25 mm ²

Recommended tools:

- . For the terminals:
 - Screwdriver with 5.5 to 6.5 mm blade.
 - Pozidriv no. 2 screwdriver.
- . For attaching or removing the DIN rail:
 - Screwdriver with 5.5 to 6 mm blade.
 - Pozidriv no. 2 screwdriver.

Manual actuation of the Isolating switch:

- . Ergonomic 2-position handle:
 - "O-OFF": Device open.
 - "I-ON": Device closed.

Contact status display:

- . By marking of the handle:
 - "O-OFF" in white on a green background = contacts open.
 - "I-ON" in white on a red background = contacts closed.

Locking:

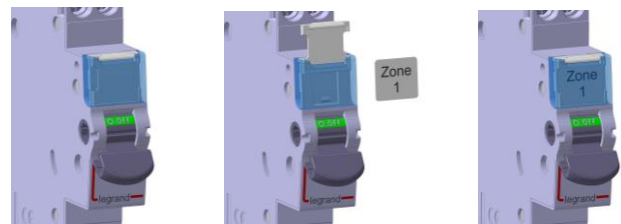
- . Padlocks possible in the open and closed positions with padlock support (Cat. No. 4 063 03) and Ø5 mm padlock (Cat. N°. 4 063 13) or Ø6 mm padlock (Cat. N°. 0 227 97).

Sealing:

- . Possible in the open or closed positions.

Labelling:

- . Circuit identification by way of a label inserted in the label holder situated on the front of the product.



Isolating switch DX³-IS

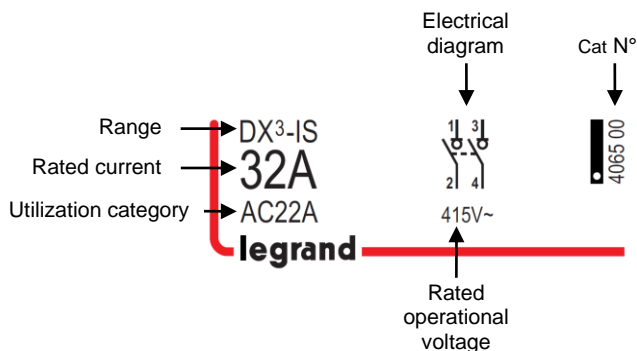
1 module per pole, from 32 to 63A

Cat N°(s) : 4 065 00, 4 065 01, 4 065 02, 4 065 09, 4 065 10, 4 065 11, 4 065 18, 4 065 19, 4 065 20

5. GENERAL CHARACTERISTICS

Marking on the front side:

- By permanent ink pad printing.



Rated operational voltage :

- U_e = 415 V ~

Rated frequency :

- 50/60 Hz with standard tolerances.

Short circuit withstand :

- Short-circuit behavior in coordination with upstream protection:
 - Tests performed according to the protocol of IEC/EN 60669-2-4 :
The device remains fully functional and meets the switch tests after suffering two short circuit established in coordination with the DPCC of the following table.
 - The first short circuit being set at an angle of 45 °.
 - The second being provided by the switching on of the isolator switch on the short-circuit.
 - Rated voltage=415V
 - Coordination test with MCB DX3 6000A/10kA: Inc =10kA
 - Coordination test with Fuse 63A gG: Inc =16kA

- Following IEC/EN 60947-3 :

- I_{cw} = 12x I_e
- I_{cm} = 1000 A

Insulation voltage:

- U_i = 500 V

Rated impulse withstand voltage:

- U_{imp} = 6 kV

Direct current utilization :

- 48V (110V with 2 poles serial cabling).

Utilization category:

- AC22 : Mixed load.
- A : Frequent operations.

Degree of pollution:

- 3 in accordance with standard CEI 60664-1.

5. GENERAL CHARACTERISTICS (continued)

Power dissipated per pole :

32A	40A	63A
0,54W	0,84W	2,08W

Degree or class of protection:

- Terminals protected against direct contact, Class of protection against solid objects and liquids (wired device): IP20 in accordance with standards IEC 529 – EN 60529 and NF 20-010.
- Class II in relation to metallic conductive parts.
- Class of protection against mechanical impacts IK04 in accordance with standard EN 62262.

Plastic materials:

- Polyamide, and PC

Enclosure heat and fire resistance:

- Resistance to glow wire tests at 960°C, in accordance with standard CEI 60695-2-10 & 60695-2-11.
- Classification V2, in accordance with standard UL94.

Higher heating potential:

- The heat potential is assessed at:

2-poles	3-poles	4-poles
2.50 MJ	3.72 MJ	4.86 MJ

Closing and opening effort via the handle:

Handle force	2-poles	3-poles	4-poles
To switch Off	13N	18N	25N
To switch On	34N	50N	66N

Mechanical endurance:

- Compliant with standard IEC/EN 60947-3
- 10000 operations.

Electrical endurance:

- Compliant with standard IEC/EN 60947-3
- 1500 operations with load AC22A

Vibrations and tremors resistance :

- Compliant with appendix Q category F of standard IEC/EN 60947-1.

Ambient temperatures:

- Operation: from - 25 °C to + 70 °C.
- Storage: from - 40 °C to + 70 °C.

Isolating switch DX³-IS

Cat N°(s) : 4 065 00, 4 065 01, 4 065 02, 4 065 09, 4 065 10, 4 065 11,
4 065 18, 4 065 19, 4 065 20

1 module per pole, from 32 to 63A

5. GENERAL CHARACTERISTICS *(continued)*

Packaged volume:

	Packaging	Volume (dm ³)
2-poles	Per 1	0.3
3-poles	Per 1	0.5
4-poles	Per 1	0.7

Average unit weight:

2-poles	150 g
3-poles	226 g
4-poles	299 g

6. COMPLIANCE AND APPROVALS

In accordance with standards:

. IEC/EN 60947-3.

Usage in special conditions:

. Compliant with appendix Q catégorie F of standard IEC/EN 60947-1.

Respect for the environment – Compliance with European Union Directives:

. Compliance with Directive 2002/95/EC of 27/01/03 known as "RoHS" which provides for a restriction on the use of dangerous substances such as lead, mercury, cadmium, hexavalent chromium and polybrominated biphenyl (PBB) and polybrominated diphenyl ether (PBDE) brominated flame retardants from 1st July 2006.

. Compliance with the Directive 91/338/EEC of 18/06/91 and decree 94-647 of 27/07/04.

Plastic materials:

. Halogen free plastic materials.

. Labelling of parts compliant with ISO 11469 and ISO 1043.

Packaging:

. Design and manufacture of packaging compliant with decree 98-638 of 20/07/98 and Directive 94/62/EC.

Approvals obtained:

. See list of approvals available.

7. AUXILIARIES AND ACCESSORIES

Wiring accessories:

. Fork-type supply busbars (Cat N°: 4 049 56, 4 049 57, 4 049 59, 4 049 63, 4 049 64, 4 049 36).

. Sealable screwcover (Cat N°: 4 063 04).

. Terminal for aluminium conductor gauge 50 mm² max for DX³-IS ≤ 63A (Cat N°: 4 063 10).

. Insulating shield (Cat N°: 4 063 05).

Signalling auxiliaries (No busbar):

. Auxiliary contact (0.5 module, Cat N°: 4 062 58 or 4 062 50).

. Double Auxiliary contact (1 module, Cat N°: 4 062 66 or 4 062 64).

Installation software:

. XL PRO³.