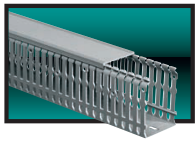
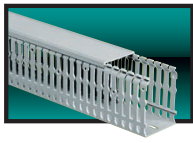


Segma cable trunking

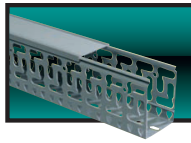
Catalogue number(s): 211 50 to 75, 330 40 to 50, 310 50 to 59, 230 40 to 53, 310 01 to 07



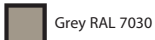
Segma



Segma ZH Halogen-free



Closed slot with oblong perforations



Grey RAL 7030



Light grey



Grey RAL 7030



Intrinsic Safety Blue



Intrinsic Safety Blue

CONTENTS

Page

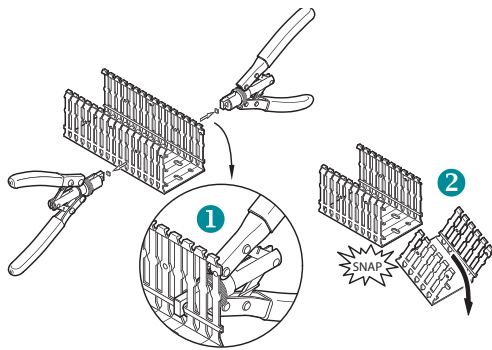
1. General characteristics	1
2. Range	2
3. Technical characteristics.....	4
4. Dimensions	6
5. Accessories	7

1. GENERAL CHARACTERISTICS

Segma cable trunking is used to organise running the wiring vertically and horizontally inside a control system or distribution electrical enclosure.

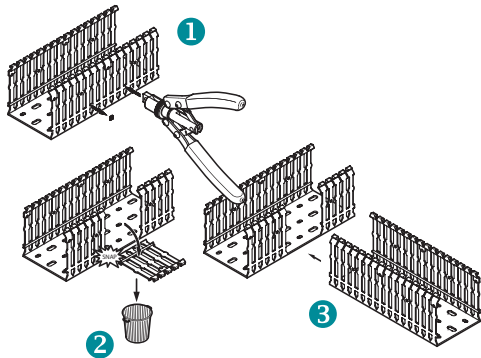
The range covers all requirements, from 15x25 to 150x100 mm.

Segma trunking can be cut to length without using a saw. After making 2 lateral cuts with the Segma tool, the trunking can be separated manually by a simple snap, thanks to the cut-outs on the bottom (quick, no dust, no burrs).



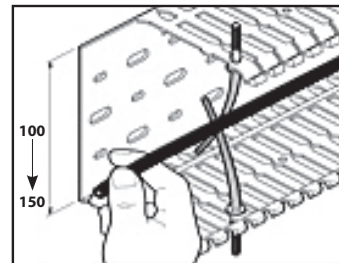
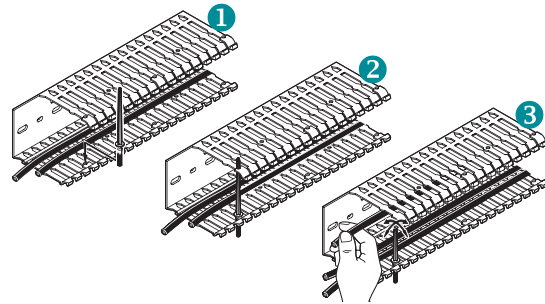
They can be used to create a T junction between vertical and horizontal trunking all the way along, without obstacles.

After cutting with the Segma tool, the side detaches easily thanks to the prescribed breaking line at the base of the trunking.

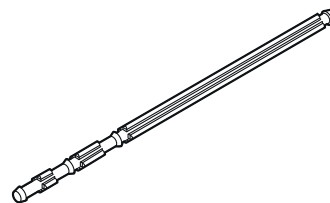


1. GENERAL CHARACTERISTICS (continued)

Wire-retaining clips can be passed through holes positioned at regular intervals along the tab ends to prevent the wires escaping from the trunking during installation. The clips can be left in place even after the cover is fitted.



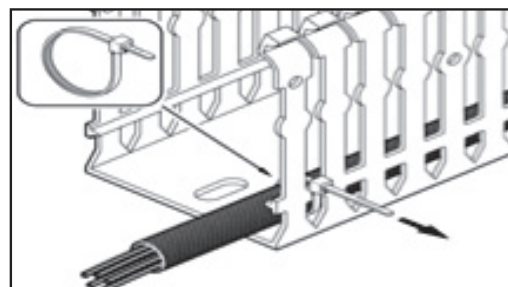
For wider trunking, two clips placed opposite one another can be used to hold the wires in place.



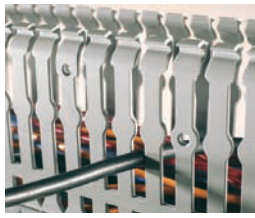
! Cable trunking closed slot cat. no. 230 40 to 230 53.

The retaining clips supplied north the cable trunking must be used to hold wires.

The trunking allows a cable tie to pass through the lateral perforations at the base of the trunking to clamp a sleeve or a cable.



1. GENERAL CHARACTERISTICS (continued)



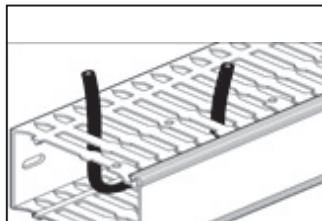
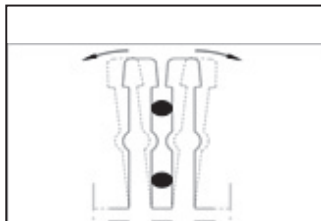
The ends on Segma trunking tabs are designed to prevent injury. The space between two tabs is 6 mm, which allows a 1.5 mm² cross-section cable maximum to pass through without breaking the tab.



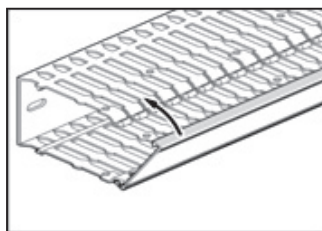
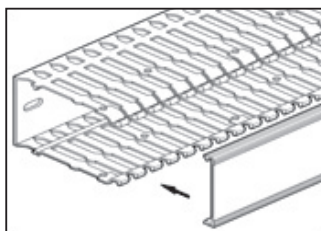
The height between the base of the trunking and the stiffener must not exceed 20% of the total height. Wires can be introduced very close to the baseplate by removing the link between the two tabs using the Segma cutter tool.



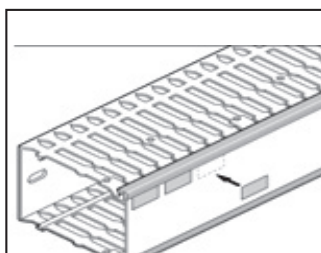
The bosses can be used to hold the wires at the bottom of the trunking to prevent them escaping during wiring. They also mean that two wiring levels can be used.



The cover is easily fitted on the trunking either by clipping on the front or by rotating it. It can be opened without special tools.



The ridges on the edges of the trunking make it easier to align the labels.



2. RANGE

4 trunking ranges depending on use:

- Segma
- Segma BSI (Intrinsic Safety Blue)
- Segma ZH halogen-free
- Segma ZH BSI (Intrinsic Safety Blue) Halogen-free
- Closed slot with oblong perforations

2.1. Segma trunking, grey RAL 7030

Length 2 m

Rails + Covers:

Cat. No.	Depth (mm)	Width (mm)	Cross-section	Pack of (m)	Weight (Kg/m)
21150	25	15	15x25	32	0.148
21151	25	25	25x25	60	0.289
21152	25	40	40x25	56	0.383
21153	40	15	15x40	40	0.173
21154	40	25	25x40	56	0.335
21155	40	40	40x40	48	0.446
21156	40	60	60x40	32	0.604
21157	40	80	80x40	24	0.723
21158	40	100	100x40	24	0.892
21159	60	25	25x60	56	0.396
21160	60	40	40x60	48	0.482
21161	60	60	60x60	32	0.617
21162	60	80	80x60	24	0.771
21163	60	100	100x60	24	0.948
21164	60	120	120x60	16	1.139
21165	80	25	25x80	40	0.456
21166	80	40	40x80	40	0.572
21167	80	60	60x80	32	0.715
21168	80	80	80x80	24	0.855
21169	80	100	100x80	16	1.040
21170	80	120	120x80	16	1.210
21171	100	40	40x100	24	0.736
21172	100	60	60x100	24	0.921
21173	100	80	80x100	20	1.097
21174	100	100	100x100	16	1.305
21175	100	150	150x100	12	1.759

Covers only:

Cat. No.	Width (mm)	Pack of (m)
26200	15	36
26201	25	36
26202	40	36
26203	60	36
26204	80	36
26205	100	36
26206	120	36
26207	150	36

2. RANGE (CONTINUED)

2.2. BSI Segma trunking - blue

Length 2 m

Rails + Covers:

Cat. No.	Depth (mm)	Width (mm)	Cross-section	Pack of (m)	Weight (Kg/m)
33040	25	25	25x25	60	0.289
33041	40	25	25x40	56	0.335
33042	40	40	40x40	48	0.446
33043	60	25	25x60	56	0.396
33044	60	40	40x60	48	0.482
33045	60	60	60x60	32	0.617
33046	80	40	40x80	40	0.572
33047	80	60	60x80	32	0.715
33048	80	80	80x80	24	0.855
33049	80	120	120x80	16	1.210
33050	100	100	100x100	16	1.305

Covers only:

Cat. No.	Width (mm)	Pack of (m)
26210	25	36
26211	40	36
26212	60	36
26213	80	36
26214	100	36
26215	120	36

2.3. Halogen-free Segma ZH trunking - light grey

Length 2 m

Rails + Covers:

Cat. No.	Depth (mm)	Width (mm)	Cross-section	Pack of (m)	Weight (Kg/m)
31050	25	25	25x25	60	0.227
31051	40	25	25x40	56	0.263
31052	40	40	40x40	48	0.350
31053	60	25	25x60	56	0.311
31054	60	40	40x60	48	0.379
31055	60	60	60x60	32	0.485
31056	80	40	40x80	40	0.445
31057	80	60	60x80	32	0.562
31058	80	80	80x80	24	0.672
31059	80	120	120x80	16	0.952

Covers only:

Cat. No.	Width (mm)	Pack of (m)
26220	25	36
26221	40	36
26222	60	36
26223	80	36
26224	120	36

2. RANGE (CONTINUED)

2.4. Halogen - free BSi Segma ZH trunking - blue

Length 2 m

Rails + Covers:

Cat. No.	Depth (mm)	Width (mm)	Cross-section	Pack of (m)	Weight (Kg/m)
31001	40	25	25x40	56	0,263
31003	40	40	40x40	48	0,350
31002	60	25	25x60	56	0,311
31004	60	40	40x60	48	0,379
31006	60	60	60x60	32	0,485
31005	80	40	40x80	40	0,445
31007	80	60	60x80	32	0,562

2.5. Closed slot trunking - grey RAL 7030

Length 2 m

Rails + Covers:

Supplied with 20 wire retaining clips

Cat. No.	Depth (mm)	Width (mm)	Cross-section	Pack of (m)	Weight (Kg/m)
23040	40	25	25x40	56	0.335
23041	40	40	40x40	48	0.446
23042	40	60	60x40	32	0.604
23043	60	25	25x60	56	0.396
23044	60	40	40x60	48	0.482
23045	60	60	60x60	32	0.617
23046	60	80	80x60	24	0.771
23047	60	120	120x60	16	1.139
23048	80	25	25x80	40	0.456
23049	80	40	40x80	40	0.572
23050	80	60	60x80	32	0.715
23051	80	80	80x80	24	0.855
23052	80	120	120x80	16	1.210
23053	100	100	100x100	16	1.305

Covers only:

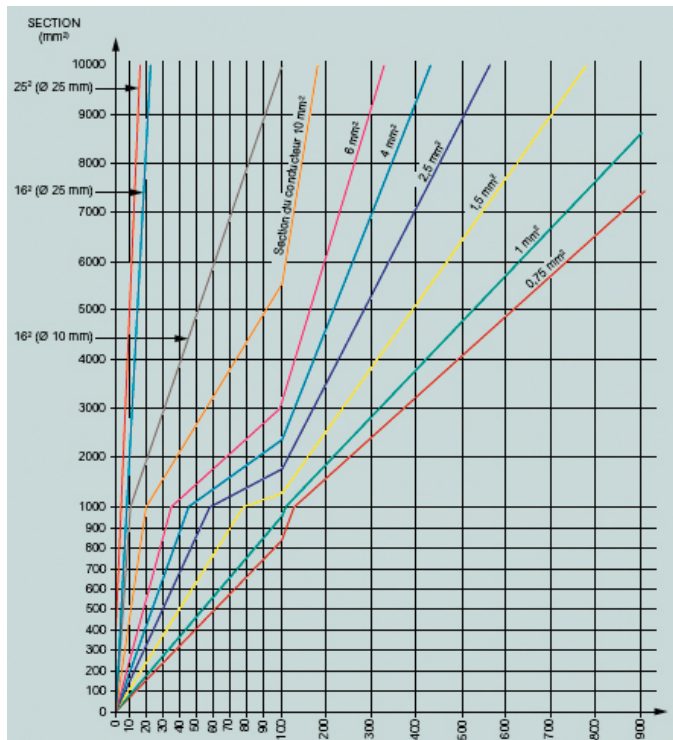
Cat. No.	Width (mm)	Pack of (m)
26201	25	36
26202	40	36
26203	60	36
26204	80	36
26205	100	36
26206	120	36

3. TECHNICAL CHARACTERISTICS

3.1. Cabling capacity

Cross-section	Capacity (mm ²)	Cross-section	Capacity (mm ²)
15x25	264	25x80	1600
25x25	391	40x80	2717
40x25	692	60x80	4216
15x40	455	80x80	5715
25x40	720	100x80	7215
40x40	1245	120x80	8729
60x40	1932	40x100	3354
80x40	2647	60x100	5216
100x40	3363	80x100	7078
25x60	1159	100x100	8960
40x60	2007	150x100	13683
60x60	3115		
80x60	4200		
100x60	5307		
120x60	6403		

WIRE DIMENSIONS CHART:



Example: 40x60 trunking = 2007 mm² capacity, or approximately:

- 250 wires 0.75 mm²
- 210 wires 1 mm²
- 160 wires 1.5 mm²
- etc.

3.2. Standards

- Conforming to standard EN 50 085 part 2-3
- Conforming to ROHS: lead and cadmium-free
- BSI Segma blue according to AFNOR NF X08-002
- Approvals: UL, CSA and NF

3. TECHNICAL CHARACTERISTICS (continued)

3.3. Product classification according to EN 50085-2-3

- Non-metal product
- Method of opening cover: no tools required
- Minimum storage and transport temperature: - 25°C
- Maximum operating temperature: + 60°C (halogen-free ranges: + 90°C)
- Flame-retardant
- No electrical continuity
- Electrically insulating
- Installation position: on vertical or horizontal surface, cover facing down not permitted

3.4. Material

- Segma: PVC
- BSI Segma: PVC
- Halogen-free Segma ZH: PC/ABS
- Halogen-free BSI Segma ZH: PC/ABS
- Closed slot: PVC

Performance of Segma trunking material:

Characteristics	PVC	PC/ABS	Unit of measurement	Standards
-----------------	-----	--------	---------------------	-----------

Physical

Specific gravity	1.67	1.18	g/cm ³	ISO 1183
Water absorption	0.05	0.60	%	ISO 62

Mechanical

Ultimate tensile strength	31	55	MPa	ISO 527
Tensile load	33	65	MPa	ISO 527
Breaking elongation	100	55	%	ISO 527
Elastic bending modulus	4,000	2,700	MPa	ISO 178

Thermal

VICAT temperature	84	110	°C	ISO 306
Operating temperature	-5 to +60 ⁽¹⁾	-5 to +90	°C	EN 50085-2-3
HDT temperature	73	91	°C	ISO 75
Expansion	< 6 x 10 ⁻⁵	< 8 x 10 ⁻⁵	°K ⁻¹	DIN 53762

Electrical

Dielectric constant	> 2.5	-	-	ASTM D150
Dielectric strength	Approx 30	25	KV/mm	IEC 243
Surface resistivity	>1 x 10 ¹⁵	>1 x 10 ¹⁵	Ohm	IEC 93

Fire behaviour

UL94 classification	VO	VO (1.5 mm)	-	UL 94
M classification	M1	M2	-	NF P 92-501
Glow-wire	960	850	°C	IEC 695-2-1
Oxygen index	> 42	> 37	%	ISO 4589

⁽¹⁾ X31 classification

3. TECHNICAL CHARACTERISTICS (continued)

Trunking calorific value:

Cat. Nos.	Material	Product	Total part (MJ/kg)
21150	PVC	15 x 25	5,640
	PVC	cv 15	
21151/33040	PVC	25 x 25	11,600
	PVC	cv 25	
21152	PVC	40 x 25	15,440
	PVC	cv 40	
21153	PVC	15 x 40	7,520
	PVC	cv 15	
21154/33041	PVC	25 x 40	13,280
	PVC	cv 25	
21155/33042	PVC	40 x 40	17,760
	PVC	cv 40	
21156	PVC	60 x 40	23,880
	PVC	cv 60	
21157	PVC	80 x 40	28,608
	PVC	cv 80	
21158	PVC	100 x 40	35,292
	PVC	cv 100	
21159/33043	PVC	25 x 60	16,120
	PVC	cv 25	
21160/33044	PVC	40 x 60	19,680
	PVC	cv 40	
21161/33045	PVC	60 x 60	24,520
	PVC	cv 60	
21162	PVC	80 x 60	30,968
	PVC	cv 80	
21163	PVC	100 x 60	37,612
	PVC	cv 100	
21164	PVC	120 x 60	45,184
	PVC	cv 120	
21165	PVC	25 x 80	17,280
	PVC	cv 25	
21166/33046	PVC	40 x 80	21,880
	PVC	cv 40	
21167/33047	PVC	60 x 80	28,960
	PVC	cv 60	
21168/33048	PVC	80 x 80	32,808
	PVC	cv 80	
21169	PVC	100 x 80	40,012
	PVC	cv 100	
21170/33049	PVC	120 x 80	46,784
	PVC	cv 120	
21171	PVC	40 x 100	28,600
	PVC	cv 40	
21172	PVC	60 x 100	35,760
	PVC	cv 60	
21173	PVC	80 x 100	42,688
	PVC	cv 80	
21174/33050	PVC	100 x 100	50,852
	PVC	cv 100	

3. TECHNICAL CHARACTERISTICS (continued)

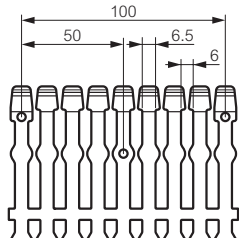
Trunking calorific value (continued):

Cat. No.	Material	Product	Total part (MJ/kg)
21175	PVC	150 x 100	69,860
	PVC	cv 150	
31050	PC/ABS	25 x 25	13,340
	PC/ABS	cv 25	
31051/31001	PC/ABS	25 x 40	15,272
	PC/ABS	cv 25	
31052/31003	PC/ABS	40 x 40	20,424
	PC/ABS	cv 40	
31053/31002	PC/ABS	25 x 60	18,538
	PC/ABS	cv 25	
31054/31004	PC/ABS	40 x 60	22,632
	PC/ABS	cv 40	
31055/31006	PC/ABS	60 x 60	28,198
	PC/ABS	cv 60	
31056/31005	PC/ABS	40 x 80	25,162
	PC/ABS	cv 40	
31057/31007	PC/ABS	60 x 80	33,304
	PC/ABS	cv 60	
31058	PC/ABS	80 x 80	37,729
	PC/ABS	cv 80	
31059	PC/ABS	120 x 80	53,802
	PC/ABS	cv 120	
23040	PVC	25 x 40	13,760
	PVC	cv 25	
23041	PVC	40 x 40	18,320
	PVC	cv 40	
23042	PVC	60 x 40	24,640
	PVC	cv 60	
23043	PVC	25 x 60	15,920
	PVC	cv 25	
23044	PVC	40 x 60	19,480
	PVC	cv 40	
23045	PVC	60 x 60	24,800
	PVC	cv 60	
23046	PVC	80 x 60	30,968
	PVC	cv 80	
23047	PVC	120 x 60	45,624
	PVC	cv 120	
23048	PVC	25 x 80	17,800
	PVC	cv 25	
23049	PVC	40 x 80	22,480
	PVC	cv 40	
23050	PVC	60 x 80	28,040
	PVC	cv 60	
23051	PVC	80 x 80	33,568
	PVC	cv 80	
23052	PVC	120 x 80	47,624
	PVC	cv 120	
23053	PVC	100 x 100	50,892
	PVC	cv 100	

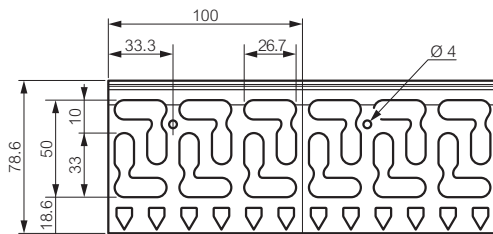
4. DIMENSIONS

4.1. Lateral perforations

Segma

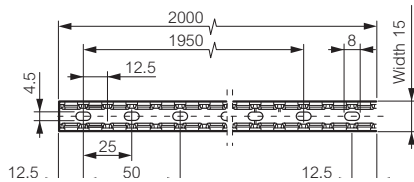


Closed slot

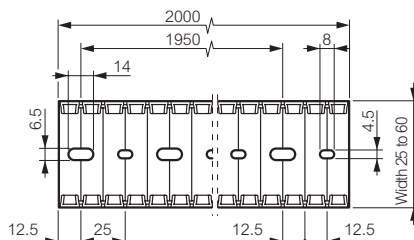


4.2. Perforations on the base

Width 15



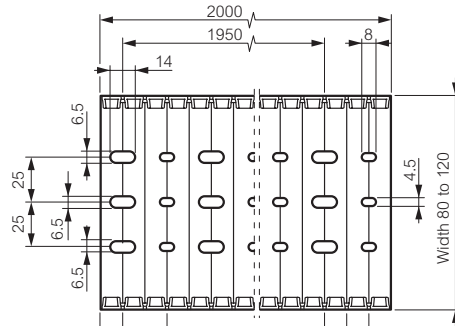
Width 25 to 50



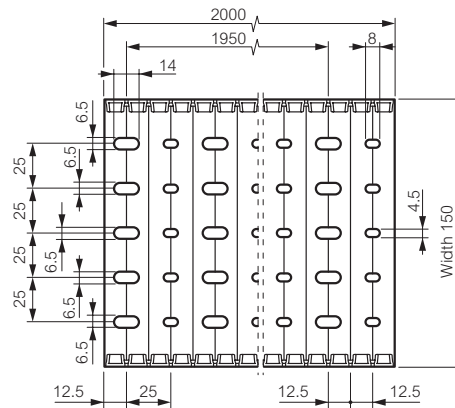
4. DIMENSIONS (continued)

4.2. Perforations on the base (continued)

Width 80 to 120



Width 150



5. ACCESSORIES

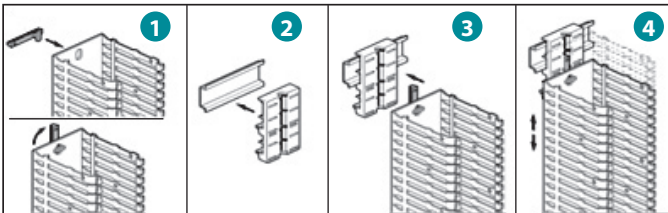
5.1. Fixing accessories

5.1.1 Screwless fixing

Cat. No.	Description
25056	Rail-fixing accessory for vertical trunking

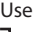


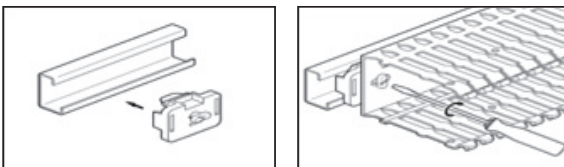
- Used to fix vertical trunking on a rail.
- Polyamide 6-6.



Cat. No.	Description
25023	Rail-fixing accessory for horizontal trunking



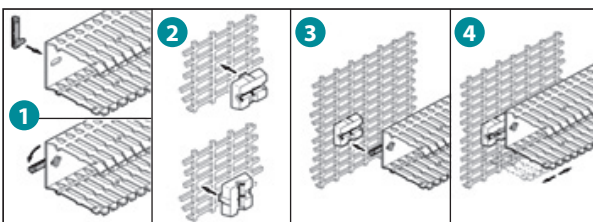
- Used to fix horizontal trunking on a  rail, depth 15 mm.
- Polyamide 6-6.



Cat. No.	Description
25024	Accessory for fixing on perforated plate



- Used to fix trunking with a perforated plate.
- Polyamide 6-6.



5. ACCESSORIES (continued)

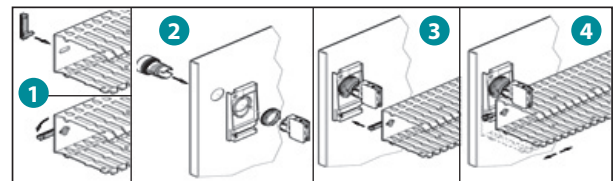
5.1. Fixing accessories (continued)

5.1.1 Screwless fixing (continued)

Cat. No.	Description
25025	Accessory for fixing to door



- Used to fix trunking to a door (without glue).
- Fits onto control and signalling auxiliaries Ø 22 mm.
- Polyamide 6-6.

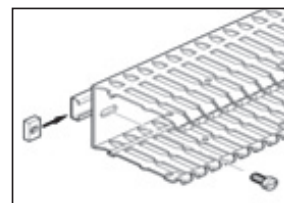


5.1.2 Nylon screws

Cat. No.	Description
25050	Nylon screw TC 6 x 12 mm
25051	Glass-fibre reinforced nylon screw TC 6 x 12 mm



- Used to fix trunking on a rail with a non-conductive screw.

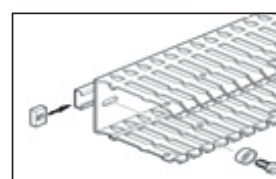


5.1.3 PVC shroud

Cat. No.	Description
25054	Screw head cover shroud Ø 4 mm
25055	Screw head cover shroud Ø 6 mm



- Used to isolate a metal screw head.



5. ACCESSORIES (continued)

5.1. Fixing accessories (continued)

5.1.4 Rivets

Cat. No.	Description	Head Ø (mm)
25015	Standard rivet Ø 4 mm	8
25021	Standard rivet Ø 5 mm	10
25016	Standard rivet Ø 6 mm	10
25017	Reinforced rivet Ø 4 mm	7.5
25018	Reinforced rivet Ø 6 mm	10

Standard - Used to fix the trunking on a solid plate without needing to tap holes.



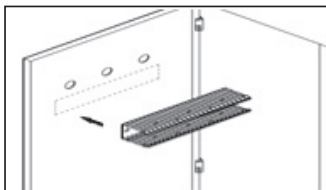
Reinforced



5.1.5 Glue

Cat. No.	Description
25061	Glue for attaching trunking to door (20 g)

- Used for gluing trunking to a door.



5. ACCESSORIES (continued)

5.2. Tools

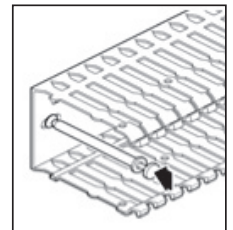
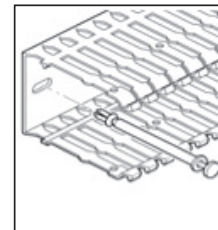
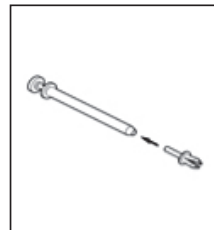
5.2.1 Cutter tool

Cat. No.	Description
25060	Segma tool for cutting trunking to required length



5.2.2 Installation tools for standard rivet

Cat. No.	Description
25058	Installation tool for standard rivet Ø 4 mm
25059	Installation tool for standard rivet Ø 6 mm



NB: Installation tool Cat. No. 25059 can be used with Ø 5 mm rivets

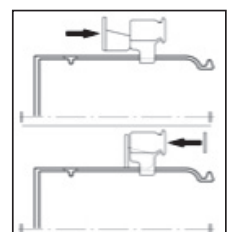
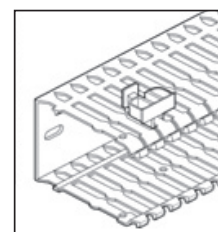
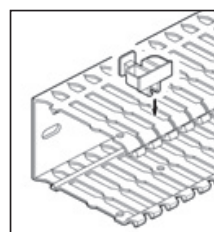
5.3. Labelling accessories

5.3.1 Label-holder

Cat. No.	Description
25062	Label-holder



- Used to label the trunking directly.
- Clips onto a tab.
- Can take a self-adhesive label 30 x 10 mm max.



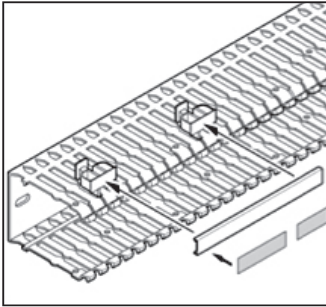
5. ACCESSORIES (continued)

5.3. Labelling accessories (continued)

5.3.2 Label-holder strip

Cat. No.	Description
26200	Label-holder strip

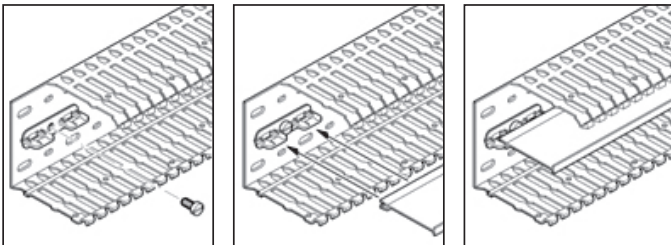
- Used to label the trunking directly with a long text.
- Clips onto label-holder Cat. No. 25062.
- Length 2 m.



5.4. Separating accessories

Cat. No.	Description
25063	Screw-in support for clipping divider in place
25028	Divider height 40 mm
25029	Divider height 60 mm
25030	Divider height 80/100 mm

- Used to compartmentalise the trunking.



5. ACCESSORIES (continued)

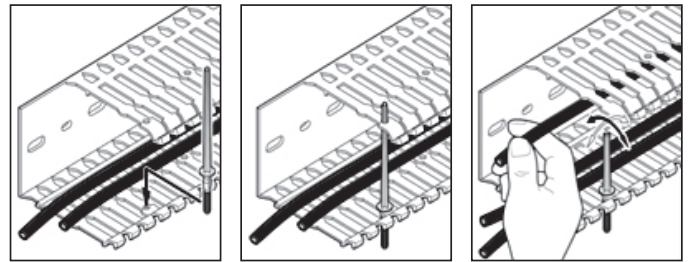
5.5. Wiring accessories

5.5.1 Clip

Cat. No.	Description
25057	Wire-retaining clip



- Clips can be used to hold the wires at the bottom of the trunking, and keep them in place during wiring.
- Total length 83 mm.



5.5.2. Braided sleeving

Cat. No.	Description
25064	Braided sleeving for door Ø 20 mm ⁽¹⁾
25065	Braided sleeving for door Ø 30 mm ⁽²⁾



- ⁽¹⁾ variation in diameter: 10 to 30 mm
- ⁽²⁾ variation in diameter: 18 to 54 mm

5.5.3. Spiral sleeves

Cat. No.	Description
25001	Spiral sleeve Ø 6 mm
25003	Spiral sleeve Ø 12 mm
25002	Flame-retardant spiral sleeve Ø 12 mm
25027	Spiral sleeve Ø 22 mm

