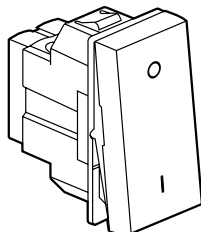


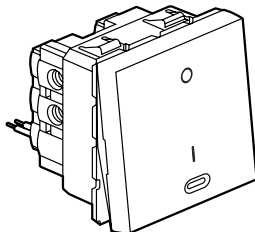
Arteor™

Cat. No(s).: 573 342/392/454/654/802

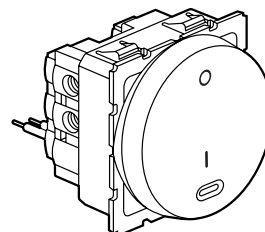
## Double pole switches with indicator



573 802



573 454/654

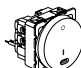




573 342/392

### 1. USE

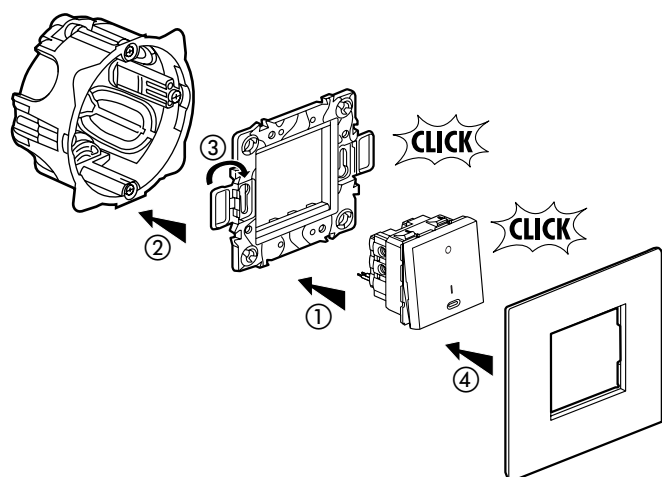
General lighting control mechanisms with signalling elements (indicator light or marking).

### 2. RANGE

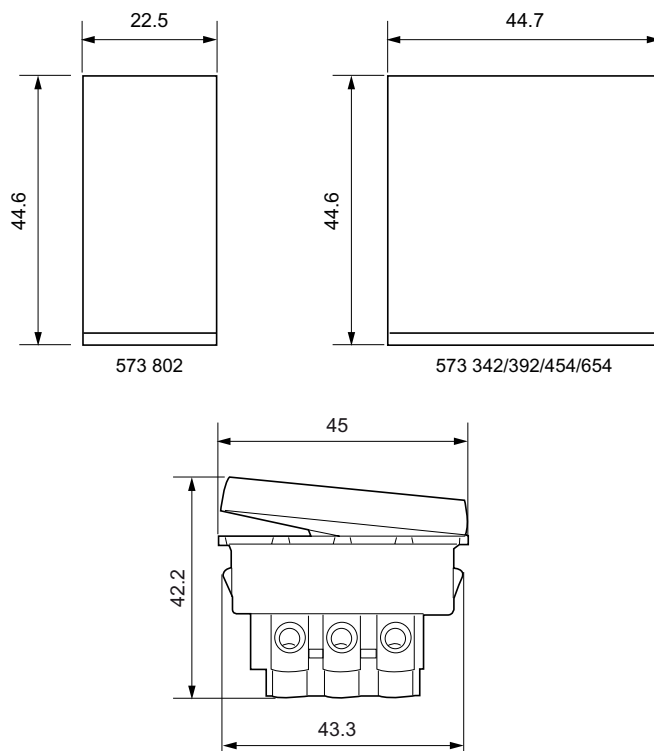
	Designation	Finishes			No. of modules	Connection method	Weight (g)	Characteristics
		White	Magnesium	Red				
	Double pole switch one way with indicator (round)	573 342	573 392		2	with screws	41	20 AX - 230 VAC
	Double pole switch one way with indicator (square)	573 454	573 654		2	with screws	42	20 AX - 230 VAC
	Double pole switch red (square)			573 802	1	with screws	30	20 AX - 250 VAC

### 3. PREPARATION

The mechanisms can be flush-mounted or surface-mounted.



### 4. OVERALL DIMENSIONS



## Double pole switches with indicator

### 5. CONNECTION

Terminals: with screws

Capacity and stripping:

	Capacity			Stripping
573 802	4 x 2.5 mm <sup>2</sup>	1 x 4 mm <sup>2</sup>	1 x 6 mm <sup>2</sup>	8 mm
573 342/392/454/654	4 x 2.5 mm <sup>2</sup>	2 x 4 mm <sup>2</sup>	1 x 6 mm <sup>2</sup>	10 mm

Screwdriver: 4 mm flat-blade up to 5.5 mm

### 6. OPERATION

Switching mechanism.

### 7. TECHNICAL CHARACTERISTICS

#### 7.1 Mechanical characteristics

Impact tests: IK 04

Protection by solid bodies / liquids: IP 40 (mounted)  
IP 20 (alone)

#### 7.2 Material characteristics

Rocker: Polycarbonate

Base: Polycarbonate

Basket: Polypropylene

#### 7.3 Electrical characteristics

Voltage: 230 VAC for 573 342/392/454/654  
250 VAC for 573 802

Current: 20 AX

Self-extinguishing: 650° C / 30 s.

Red light indicator: LED

#### 7.4 Climatic characteristics

Storage temperature: - 10° C to + 70° C

Operating temperatures: - 5° C to + 50° C

### 8. CLEANING

Surface cleaning with a cloth

Do not use: acetone, tar remover, trichloroethylene

Resistance to the following cleaning agents: Hexane (EN-60669-1),  
Methylated spirits, Soapy water, diluted ammonia, diluted pure bleach 10%,  
Glass cleaning substance, Pre-impregnated wipes.

**Caution:** A preliminary test should be carried out if other specific  
cleaning products are to be used.

### 9. CONFORMITY - APPROVALS

Approvals in process: BSI