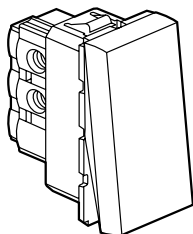
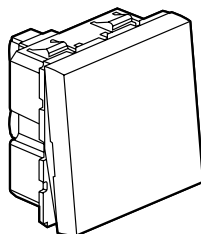


## Arteor™ 10 AX switches

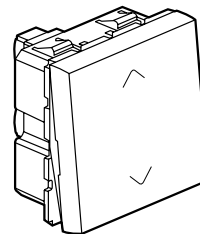
Cat. No(s): 573 450/451/650/651/801



573 801



573 450/650



573 451/651

### 1. USE

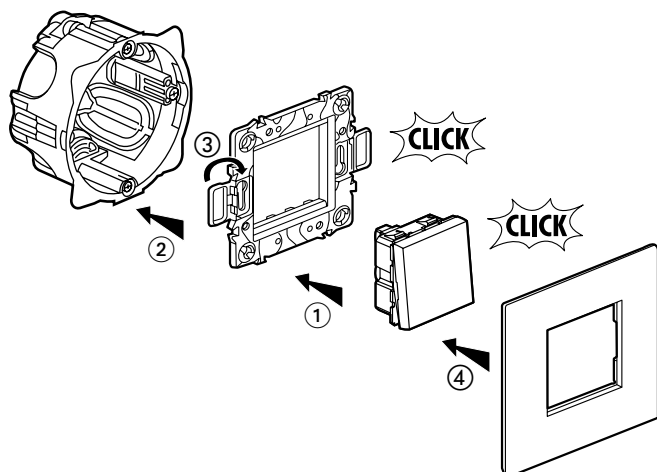
General lighting control mechanisms with signalling elements (indicator, color).

### 2. RANGE

	Designation	Finishes			No. of modules	Connection method	Weight (g)	Characteristics
		White	Magnesium	Red				
	One-way switch (square)	573 450	573 650	-	2	with screws	29.1	10 AX - 230 VAC
	Two-way switch (square)	573 451	573 651	-	2	with screws	31.9	10 AX - 230 VAC
	One-way switch Red color (square)	-	-	573 801	1	with screws	21	10 AX - 230 VAC

### 3. PREPARATION

The mechanisms can be flush-mounted or surface-mounted

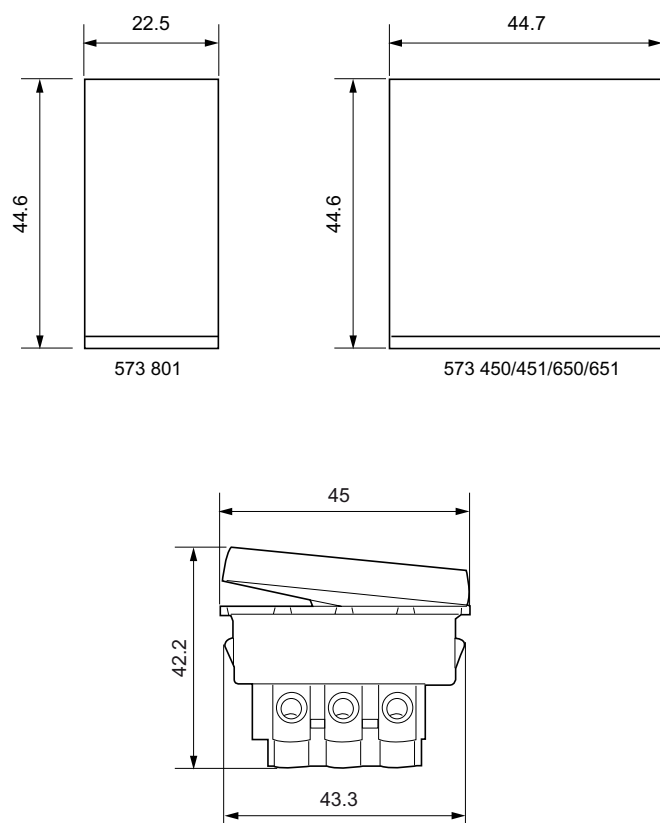


# Arteor™

## 10 AX switches

Cat. No(s): 573 450/451/650/651/801

### 4. OVERALL DIMENSIONS



### 5. CONNECTION

Terminals: with screws  
Capacity: 2 x 2.5 mm<sup>2</sup> or 1 x 4 mm<sup>2</sup>  
Stripping: 10 mm  
Screwdriver: 4 mm flat-blade up to 5.5 mm

### 6. OPERATION

Push-button mechanism with/without marking red color.

### 7. TECHNICAL CHARACTERISTICS

#### 7.1 Mechanical characteristics

Impact tests: IK 04  
Protection by solid bodies / liquids: IP 40 (mounted)  
IP 20 (alone)

#### 7.2 Material characteristics

Rocker: Polycarbonate  
Base: Polycarbonate  
Basket: Polypropylene

#### 7.3 Electrical characteristics

Voltage: 230 VAC  
Current: 10 AX  
Self-extinguishing: 650° C / 30 s.

#### 7.4 Climatic characteristics

Storage temperature: - 10° C to + 70° C  
Operating temperatures: - 5° C to + 50° C

### 8. CLEANING

Surface cleaning with a cloth  
Do not use: acetone, tar remover, trichloroethylene.

Resistance to the following cleaning agents: Hexane (EN-60669-1), Methylated spirits, Soapy water, diluted ammonia, diluted pure bleach 10%, Glass cleaning substance, Pre-impregnated wipes.

**Caution:** A preliminary test should be carried out if other specific cleaning products are to be used.

### 9. CONFORMITY - APPROVALS

Approvals in process: BSI