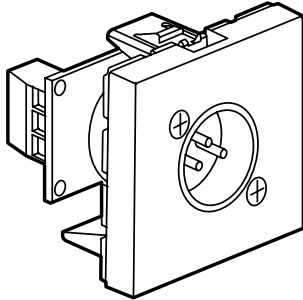
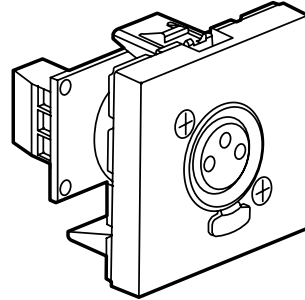


Arteor™ XLR socket

Cat. no(s): 5 722 77/83 - 5 724 98/99 - 5 727 83



5 722 77



5 722 83 - 5 724 98/99 - 5 727 83

1. USE

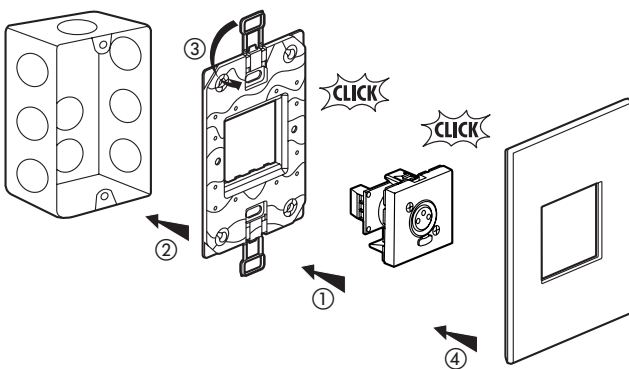
For connecting a microphone or a remote console to an amplifier. Audio stereo link to any peripheral, amplifier, mixing table, DVD player, camera, VTR, video conference equipment, etc.

2. RANGE

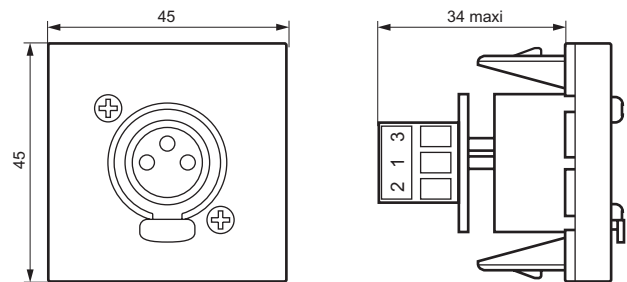
Designation	Finishes				Number of modules	Fixing method	Connection method
	White	Magnesium	Soft Alu	Champagne			
XLR audio socket male	5 722 77	-	-	-	2	with clips	with screws
XLR audio socket female	5 722 83	5 727 83	5 724 98	5 724 99	2	with clips	with screws

3. PREPARATION

The mechanism can be flush-mounted or surface-mounted.



4. OVERALL DIMENSIONS



5. CONNECTION (Continued)

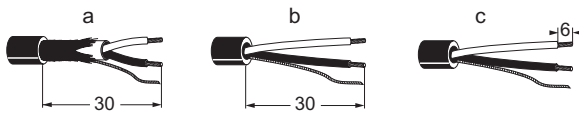
Wide terminal strip taking a 1 mm² conductor max.

Supplied in a bag containing:

- 1 Colring tie
- ferrules to be crimped for conductor < 0.5 mm²
- thermoformable sheaths

Cable bend radius : 35 mm

Stripping



Recommended wire: audio wire 2 x 0.22 mm² to 0.40 mm².

a - Cable unsheathing length: 30 mm.

Recover the drain wire of the cable's general shielding

b - Remove the braid and the aluminium shielding tape

c - Core stripping length : 6 mm.

Wiring

Wide terminal strip taking a 1 mm² conductor max.

Supplied in a bag containing:

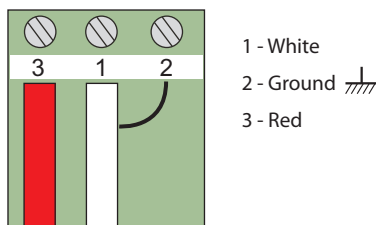
- 1 Colring tie
- ferrules to be crimped for conductor < 0.5 mm².

Tools required: flat-blade screwdriver 0.4 x 2.5 mm and flat-nose pliers.
Insulate the drain wire using the neoprene sleeve supplied, thread it into the ferrule supplied and crimp it using the flat-nose pliers.
Thread the cores into the ferrules supplied and crimp them using the flat-nose pliers.

Start by wiring the drain wire, then the cores.

Hold the cable mechanically using the cable clamp supplied.

Follow the cabling instructions below:



1 - White

2 - Ground

3 - Red

6. TECHNICAL CHARACTERISTICS

■ 6.1 Mechanical characteristics

Impact tests: IK 04

Penetration by solid bodies/liquid: IP 40

■ 6.2 Material Characteristics

Base: Polycarbonate

Cover: ABS

Self-extinguishing: 650° C / 30 s

■ 6.3 Climatic characteristics

Storage temperatures: - 10° C to + 70° C

Operating temperatures: - 5° C to + 50° C

7. CLEANING

Surface cleaning with a cloth.

Do not use: acetone, tar remover, trichloroethylene

■ 7.1 Resistance to cleaning agents

Resistance to the following agents:

- Hexane (EN 60669-1),
- Methylated spirits,
- Soapy water,
- Diluted ammonia,
- Diluted pure bleach 10%,
- Glass cleaning substance,
- Pre-impregnated wipes.

■ 7.2 Resistance to hospital-type cleaning agents

Resistance to the following agents:

- Anios,
- Surfanios,
- Bactilisyne,
- Diluted hydrogen peroxide (35%).

Caution: Always test before using other special cleaning products.

8. STANDARDS AND APPROVALS

Compliance with installation and manufacturing standards.

Refer to e-catalogue.