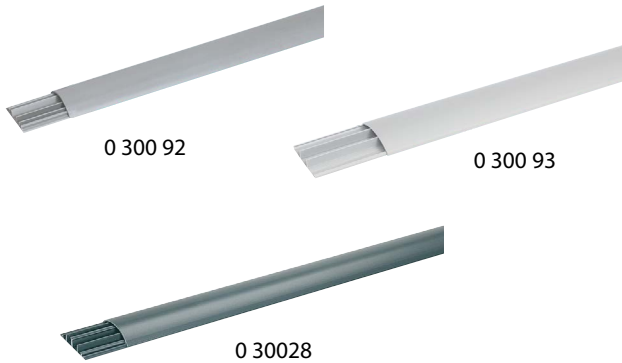


Floor ducts & finishing accessories

Cat. No(s) : 0 328 00/01/02/03/05/06/07/10,
0 300 88/90/91/92/93, 0 300 11/12/18/19, 0 107
71/72/74, 0 106 90



CONTENTS

Page

1. Use	1
2. Range	1
3. Installation	4
4. Technical characteristics	4
5. Material characteristics	5

1. USE

The floor duct distribution system provides: - distribution, protection and branching of different cables in an electrical installation - profiles, finishing and routing accessories (end cap, flat angle, junction box, cover joint) - optimum reliability and safety through compliance with standard NF EN 50085-2-2

It allows the connection between a profile, column, mini-column or floor unit.

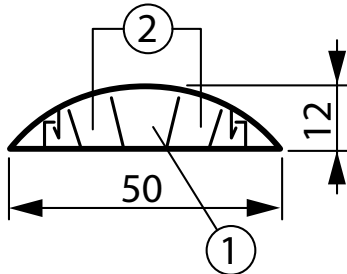
2. RANGE

2.1 Floor ducts

2.1.1 50x12 mm floor duct cat. no 0 300 92

Supplied in lengths of 2 m
To be cut with saw (metal type saw) and cutting box (cat. no. 0 306 98)
Body and cover made solid by snap-fitting (removable using tool, e.g. screwdriver, etc.)
3 compartments
Colour, grey RAL 7030

Overall dimensions and cabling capacity

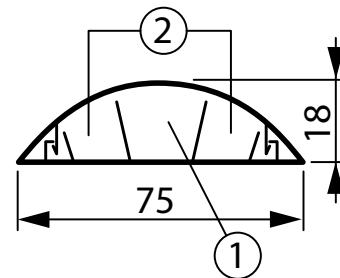


3 compartments
Capacity 1 : maxi Ø 9 mm
Capacity 2 : maxi Ø 6 mm

2.1.2 75x18 mm floor duct cat. no 0 300 88/90/91/93

Supplied in lengths of 2m
To be cut with saw (metal type saw) and cutting box (cat. no. 0 306 98)
Body and cover made solid by snap-fitting (removable using tool, e.g. screwdriver, etc.)
3 compartments
2 finitions :
- PVC
 . colour grey RAL 7030 cat. no 0 300 93
 . colour white RAL 9003 cat. no 0 300 88
 . colour black RAL 9017 cat. no 0 300 90
- Aluminium (body in PVC - cover in aluminium) cat. no 0 300 91

Overall dimensions and cabling capacity



3 compartments
Capacity 1 : maxi Ø 14 mm
Capacity 2 : maxi Ø 11 mm

2. RANGE (CONT.)

2.1 Floor ducts (cont.)

2.1.3 92x20 mm floor duct cat. no 0 328 00

Supplied in lengths of 2m

Granite cover.

Equipped with two adhesive strips for better hold on floor.

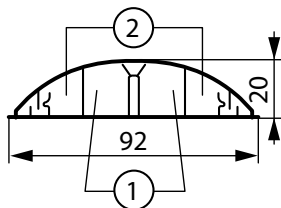
To be cut with saw (metal type saw) and cutting box (cat. no. 0 306 98)

Body and cover made solid by snap-fitting (removable using tool, e.g. screwdriver, etc.)

4 compartments

Colour, grey RAL 7016

Overall dimensions and cabling capacity



- ①: maxi Ø 14,5 mm
- ②: maxi Ø 9 mm

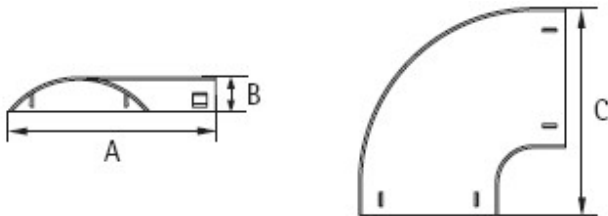
4 compartments

Capacity 1 : maxi Ø 14,5 mm

Capacity 2 : maxi Ø 9,5 mm

2.2 Accessories

2.2.1 Flat angle cat. nos 0 300 11/18 et 0 328 02



Cat. nos	for floor duct	Dimensions (mm)
0 300 11	50x12 mm	A = 53 B = 14 C = 84
0 300 18	75x18 mm	A = 79 B = 19 C = 116
0 328 02	92x20 mm	A = B = C

Allows the flat-angle connection of two profiles with the same cross-section:

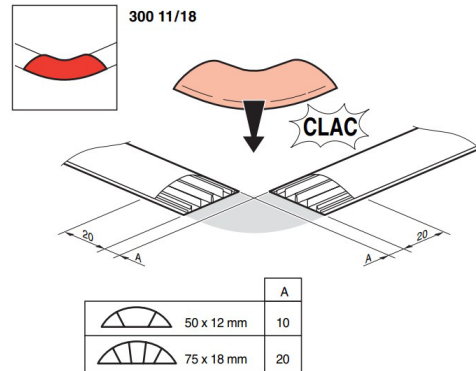
- Eliminates the need for mitre cutting on the profile
- Maintains the protection rating (IP)
- Improves aesthetics (covers the cut)
- Clip-on mounting onto the floor duct
- Enables variable flat angles of $\pm 2^\circ$
- Can be installed after the profiles have been laid edge to edge; the remaining space accommodates the flat-angle base plate

Colours:

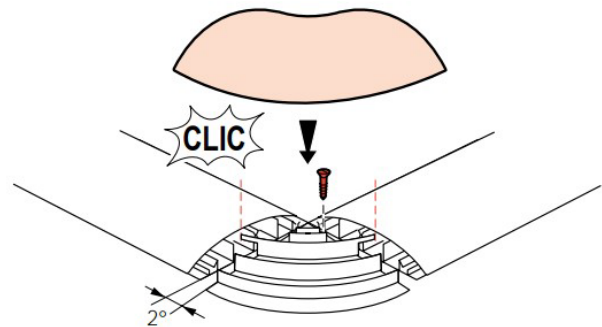
- Grey RAL 7030 for cat. nos 0 300 11/18

- Grey RAL 7016 for cat. no 0 328 02

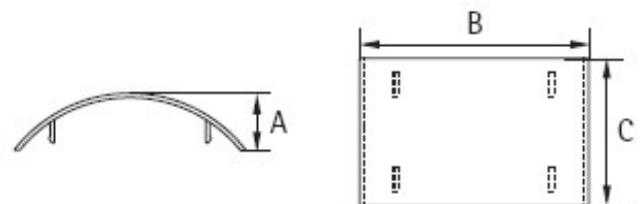
Installation with 50x12 or 75x18 mm



Installation with 92x20 mm floor duct



2.2.2 Cover joint cat. nos 0 300 12/19 & 0 328 03



Cat. nos	for floor duct	Dimensions (mm)
0 300 12	50x12 mm	A = 14 B = 52 C = 50
0 300 19	75x18 mm	A = 19 B = 78 C = 50
0 328 03	92x20 mm	A = B = C

Allows end-to-end connection of two profiles with the same cross-section:

- Maintains the protection rating (IP)
- Improves aesthetics (covers the cut)
- Clip-on mounting onto the skirting board

Colours:

Grey RAL 7030 for cat. nos 0 300 12/19

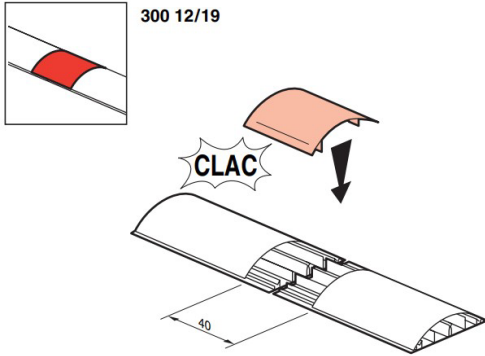
Grey RAL 7016 for cat. no 0 328 03

2. RANGE (CONT.)

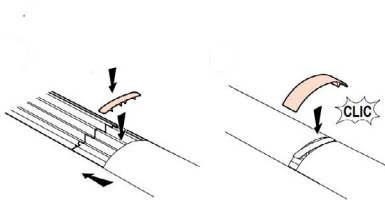
2.2 Accessories (cont.)

2.2.2 Cover joint cat. nos 0 300 12/19 & 0 328 03 (cont.)

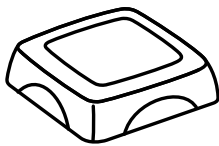
Installation with 50x12 or 75x18 mm floor duct



Installation with 92x20 mm floor duct



2.2.3 Junction box cat. no 0 328 01

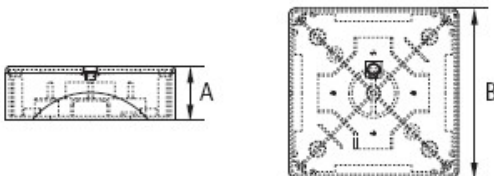


Allows cable management in four directions with separation of circuits for floor ducts with the same cross-section:

- Maintains the protection rating (IP)
- Improves aesthetics (covers the cut)
- Screw-mounted installation onto the floor

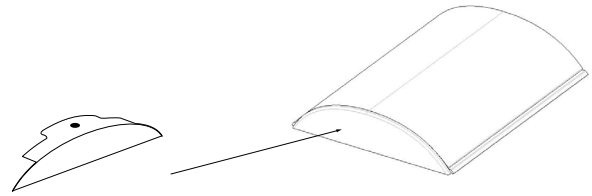
Colour: Grey RAL 7016

Overall dimensions:



Cat. nos	For floor duct	Dimensions (mm)
0 328 01	92x20 mm	A = 40 B = 178

2.2.4 End cap cat. no 0 328 07

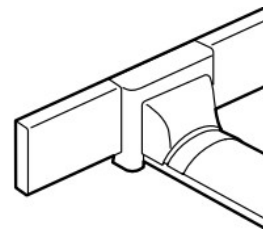


Allows the end closure of the floor duct cat. no 0 328 00:
No end caps are available for floor crossings 50 x 12 mm and 75 x 18 mm.

- Maintains the protection rating (IP)
- Improves aesthetics
- Installation: Mounted onto the profile body from the front, by push-fit and screw fixing.

Colour: Grey RAL 7016

2.2.5 Junction between floor duct and 60x20/75x20 mm DLPlus dado trunking cat. no 0 328 05



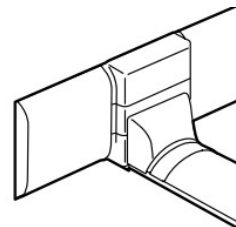
Allows connection from a 60 x 20 / 75 x 20 mm dado trunking to a floor duct cat. no 0 328 00:

- Maintains the protection rating (IP)
- Improves aesthetics (covers the cut)
- Clip-on mounting onto the floor duct

Supplied with external cover joint.

Colour: White RAL 9003 + cover joint RAL 7016

2.2.6 Junction between 92x20 floor duct and 80/120x20 DLPlus dado trunking cat. no 0 328 06



Allows connection from a 80/120x20 dado trunking to a floor duct cat. no 0 328 00

- Maintains the protection rating (IP)
- Improves aesthetics (covers the cut)
- Clip-on mounting onto the floor duct

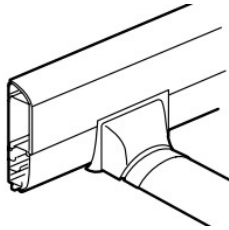
Supplied with external cover joint.

Colour: White RAL 9003 + cover joint RAL 7016

2. RANGE (CONT.)

2.2 Accessories (cont.)

2.2.7 Junction between 92x20 floor duct and 140x35 DLP skirting trunking cat. no 0 328 10



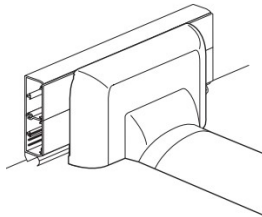
Allows connection from a 140 × 35 mm DLP skirting to a floor duct cat. no 0 328 00.

Supplied with external cover joint.

- Maintains the protection rating (IP)
- Improves aesthetics (covers the cut)
- Clip-on mounting onto the floor duct

Colour: White RAL 9003 + cover joint RAL 7016

2.2.8 Junction between floor duct and DLP trunkings cat. nos 0 107 71/72/74



Allows connection from a DLP trunking to a floor duct cat. no 0 328 00.

Supplied with external cover joint.

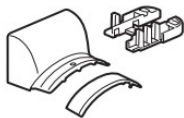
- Maintains the protection rating (IP)
- Improves aesthetics (covers the cut)
- Clip-on mounting onto the floor duct

Colour: White RAL 9003 + cover joint RAL 7016

Necessary to add cat. no 106 90 (see below).

2.2.9 DLP additional floor duct accessory cat. no 0 106 90

106 90



Allows to complete the junctions cat. nos 0 107 71/72/74 for junction between floor duct and DLP trunking cat. no 0 328 00.

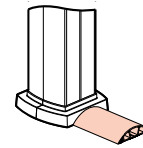
Supplied with external cover joint.

- Maintains the protection rating (IP)
- Improves aesthetics (covers the cut-out)
- Clips directly onto the floor duct

Colour: White RAL 9003 + cover joint RAL 7016

3. INSTALLATION

3.1 Possible connection from all columns and mini-columns to all floor ducts



- Maintains the protection rating (IP)
- Improves aesthetics (covers the cut)
- Clip-on mounting onto the floor duct

4. TECHNICAL CHARACTERISTICS

Classification for distribution system by floor standard NF EN 50085-2-2 concerns systems for distributing currents in the floor (sunken or surface-mounted)

6.2 Resistance to impact for installation and application	5J
6.3 Minimum storage and transport temperature	- 25°C
6.3 Minimum installation and application temperature	- 5°C
6.3 Maximum application temperature	+ 60°C
6.4 Resistance to flame propagation	Non propagating
6.5 Electrical continuity characteristics	Without continuity
6.6 Electrical insulating characteristics	With electrical insulating characteristic except cat. no 0 300 91
6.7 Degree of protection provided by enclosure	IP 20
6.9 System access cover retention	With a tool
6.101 Floor treatment	Dry floor treatment
6.102 Resistance to a vertical load applied over a small surface area	1500N for cat. no 0 300 92 500N for cat. nos 0 300 88/90/91/93 & 0 328 00
6.103 Optional classification according to resistance to a vertical load applied over a large surface area	3000N

Composition and function with distribution system on floor

Floor duct dimensions		50x12	75x18	92x20
Floor duct cat. nos		0 300 92	0 300 88/90/91/93	0 328 00
Floor duct accessories	Junction box	-	-	0 328 01
	Flat angle	0 300 11	0 300 18	0 328 02
	Cover joint	0 300 12	0 300 19	0 328 03
	End cap	-	-	0 328 07

5. MATERIAL CHARACTERISTICS

For components (flat angles, end caps, junction boxes, cover joints, branches, adapters, extras)
Family: polyvinyl chloride PVC

Material for floor duct

Family: polyvinyl chloride PVC

- PVC RAL 7030 for cat. nos 0 300 92/0 300 93 and 0 300 91 (only the body of cat. no 0 300 91 is in PVC)
- ALUMINIUM for the cover of cat. no 0 300 91
- PVC RAL 7016 for cat. no 0 328 00
- PVC RAL 9003 for cat. no 0 300 88
- PVC RAL 9017 for cat. no 0 300 90