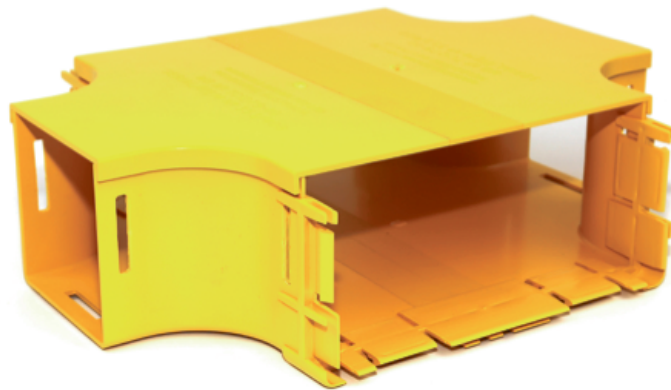


CROSS CONNECTOR ASSEMBLY, 220 mm - 100 mm DUCT

Part number: TC1279-65A



1. USE / APPLICATION

This cross connector is used to establish a right, angled intersection between 220 mm and 100 mm duct. i.e. 2 arms of the connector are connected to both 220 mm and 100 mm duct, or other components, using either: standard joiners (Part No: TC1279-25 and TC1279-27) or slotless joiners (Part No: TC1279-250A and TC1279-248A). NOTE: Care should be taken not to lay more than 50 mm depth of pigtailed or patch cords in troughing, particularly where they cross each other at right angles. This may occur with this connector.

2. BENEFITS & FEATURES

- Includes cover (Part No. TC 1279-66) clips straight into joiner
- Tough, fire retardant material
- Joiners (Part No's: TC1279-25 & TC1279-27 or TC1279-250A and TC1279-248A); available separately (for connection to 220 mm & 100 mm ducting)
- Purchase as a unit

3. TECHNICAL ATTRIBUTES

Dimensions	246 mm (W) x 105 mm (H) x 370 mm (D)
Weight	780 grams
Materials	Fire retardant plastic, Halogen free, UL94-VO rated