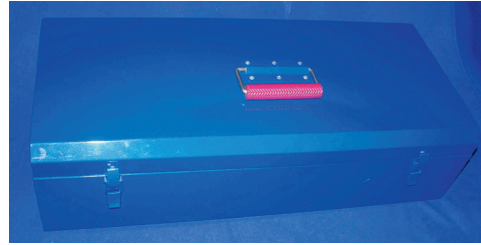
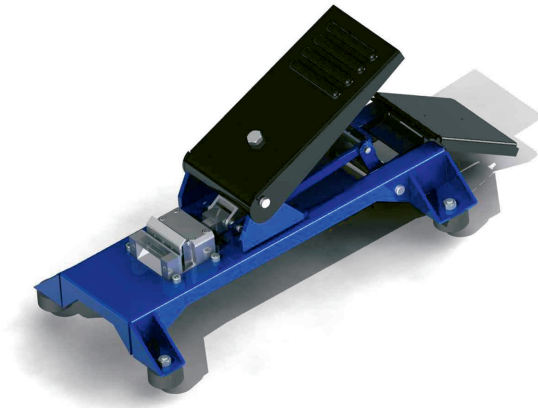


**SLOTING TOOL, FOOT OPERATED, FOR 300 x 100 mm,
220 x 100 mm AND 100 x 100 mm DUCT**

Part number: TC1279-500KIT

**1. USE / APPLICATION**

The foot operated duct slotting tool is a means of making duct end slots, easily, accurately and quickly i.e. less than 1 minute to slot one end of a duct. By using a foot operated system a small effort is required to exert the large force necessary to make a slot. Both hands are free to hold the duct. The jaws are made of hardened carbon steel, for a long service life. To operate, place duct side or end, within the tools cutting guides, hold duct down flush with top face of tool, and press foot operated lever, until a slot is made. Release the slotting punch, using the foot operated release pedal. Remove and reposition duct for next slot. The slotting tool cuts a slot in the duct end to suit a standard joiner (Part No's. TC1279-25, TC1279-27 & TC1279-320KIT); available separately. The kit includes one foot operated slotting tool and a metal tool box, for storage and transport, c/w a foam insert.

2. BENEFITS & FEATURES

- Simple, easy to use, foot operated slotting tool (Part No:TC1279-500)
- Makes duct end slots, easily, accurately, simply, quickly and repeatably.
- Tool made from materials to ensure a long, reliable, service life
- Tool has a lifting handle
- Metal tool box, for storage & transport, c/w foam insert, included
- Purchase as a kit

3. TECHNICAL ATTRIBUTES

Dimensions	Tool: 240 mm (W) x 215 mm (H)(Open) x 570/610 mm (D) (Body/Handle)
	Box: 300/310 mm (W) (Box/Catch) x 170/195 mm (Box/Handle) x 650 mm (D)
Weight	8.2 kg (Tool); 14 kg (Tool and Box)
Materials	Steel
Colour	Black and Blue