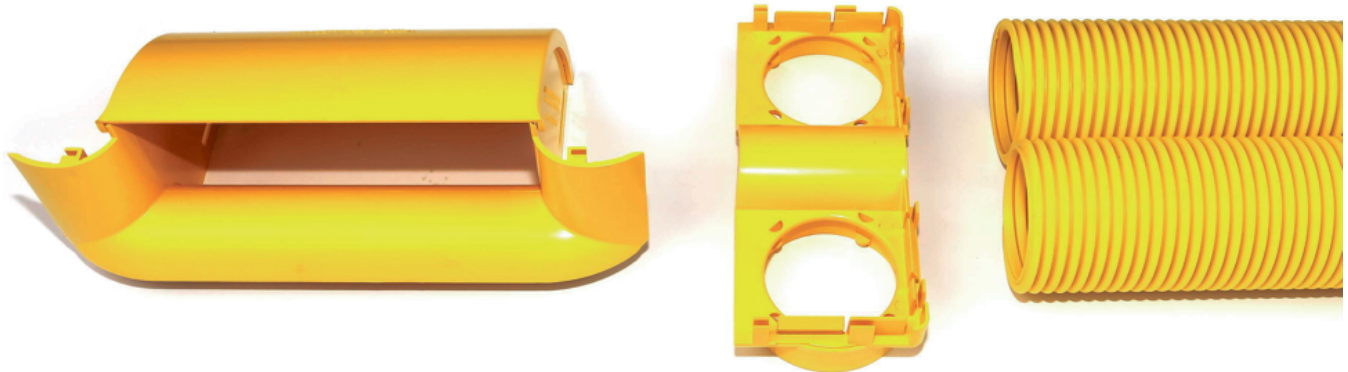


BREAK OUT KIT, 90°, DOWN, (220 mm x 100 mm DUCT), WITH TWO Ø88 mm OUTLETS, FOR 100 mm, 220 mm OR 300 mm DUCT, WITH TWO x Ø75 mm ID/Ø88 mm OD FLEXIBLE, CONVOLUTED TUBES

Part number: TC1279-454KIT

**1. USE / APPLICATION**

The break out kit is used to provide a safe exit for optical fibre cords to equipment, at any point in a 100 mm, 220 mm or 300 mm duct system. It allows optical fibre cords to feed vertically down to a rack. The break-out unit clips straight into a cut out, 2 cuts wide x 75 mm deep, made by the cut out tool (Part No: TC1279-231KIT). The second cut down is made to the top of the ducts highest longitudinal rib. This 220 mm x 100 mm duct, 90°, down break out kit, has two large convoluted tubes exiting the unit. Each tube is Ø75 mm ID/Ø88 mm OD (Part No: TC1279-458). With a prepared square end, each tube screws into the mating outlet port. The 90°, down break out has a snap-fit, removable cover (Part No: TC1279-455). Alternatively, the duct edge can be prepared using a saw (Part No: 100 x 060) with the Cut Out Jig (Part No: TC1279-483A); available separately.

2. BENEFITS & FEATURES

- Provides a 90°, down bend, for two large size convoluted tubes, in a 100 mm, 220 mm or 300 mm duct system
- Each Ø75 mm ID tube can carry either: 360 x Ø2 mm cords; 210 x Ø2.4 mm cords; or 160 x Ø3 mm cords maximum.
- Includes removable cover (Part No: TC1279-455)
- Tough, fire retardant, ROHS compliant material
- Purchase as a kit

3. TECHNICAL ATTRIBUTES

Dimensions	342 mm (W) x 130 mm (H) x 170 mm (D) Ø75 mm ID/Ø88 mm OD X 2 m long
Weight	4.6 kg
Materials	Fire retardant plastic, Halogen free, UL94-VO rated
Colour	Yellow