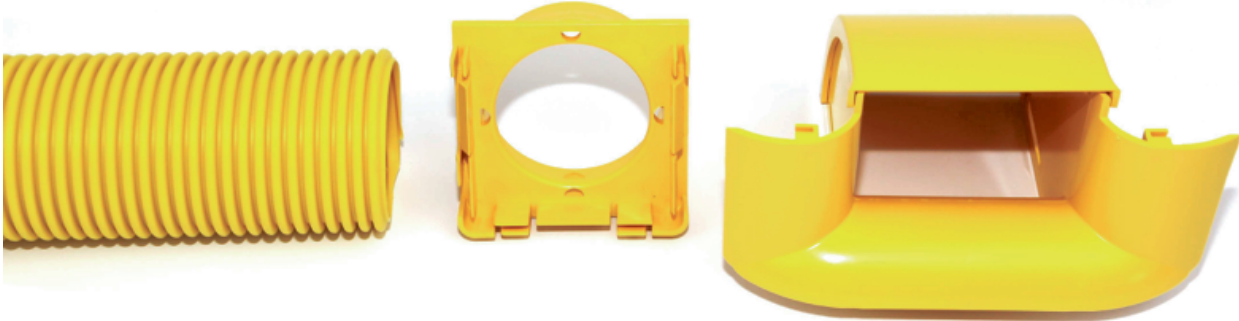


**BREAK OUT KIT, 90°, DOWN, (100 mm x 100 mm DUCT), WITH 1 x Ø88 mm  
OUTLET, FOR 100 mm, 220 mm OR 300 mm DUCT, WITH 1 x Ø75 mm  
ID/Ø88 mm OD FLEXIBLE, CONVOLUTED TUBE**

Part number: TC1279-452KIT

**1. USE / APPLICATION**

The break out kit is used to provide a safe, exit for optical fibre cords to equipment, at any point in a 100 mm, 220 mm or 300 mm duct system. It allows optical fibre cords to feed vertically down to a rack. The break-out unit clips straight into a cut out, 1 cut wide x 75 mm deep, made using the cut out tool (Part No: TC1279-231KIT). The cut down is made to the top of the ducts highest longitudinal rib. This 100 mm x 100 mm duct, 90°, down break out kit, has one large diameter convoluted tube exiting the unit. The tube is Ø75 mm ID/Ø88 mm OD mm (Part No: TC1279-458). With a prepared square end, the tube screws into the mating outlet port. The 90 degree, down break out has a snap-fit, removable cover (Part No: TC1279-453).

Alternatively, the duct edge can be prepared using a saw (Part No: 100 x 060) with the Cut Out Jig (Part No: TC1279-83A); available separately.

**2. BENEFITS & FEATURES**

- Provides a 90°, down bend, for one large size convoluted tube, in a 100 mm, 220 mm or 300 mm duct system
- The Ø75 mm ID/Ø88 mm OD tube can carry either: 360 x Ø2 mm cords; 210 x Ø2.4 mm cords; or 160 x Ø3 mm cords maximum
- Includes removable cover ( Part No: TC1279-453)
- Tough, fire retardant, ROHS compliant material
- Purchase as a kit

**3. TECHNICAL ATTRIBUTES**

Dimensions	220 mm (W) x 150 mm (H) x 170 mm (D) Ø75 mm ID/Ø88 mm OD x 2 m long
Weight	2.4 kg
Materials	Fire retardant plastic, Halogen free, UL94-VO rated
Colour	Yellow