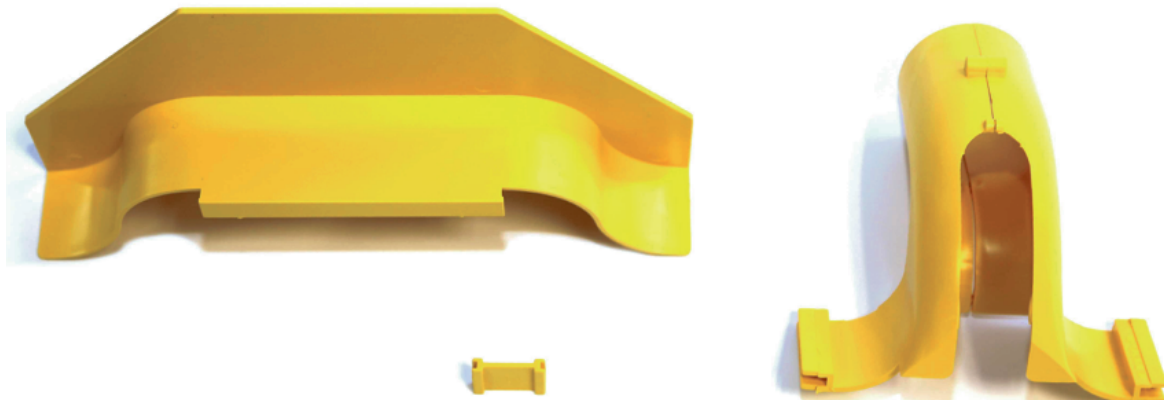


**DROP-OFF KIT, Ø44 mm ID/Ø50 mm OD  
TUBE, WITH RAMP OFF****Part number: TC1279-41KIT****1. USE / APPLICATION**

The drop off kit is used to provide a safe exit for fibre cords to equipment below or above 300, 220, 100 & 50 mm ducting. It fits into a cut out provided by the cut out tool (Part No: TC1279-50KIT) and includes:

- a spreader to lock the drop off connector,
- and a RAMP OFF (Part No: TC1279-42).

The ramp off also clips into the same cut out (when fitting to 300, 220 & 100 mm ducting). It provides a tubular exit point over which a Ø44 mm ID/ Ø50 mm OD flexible (or split) convoluted tube (Part No: TC1279-26 or TC1279-350) can be fitted. Also convoluted tubing adaptor kit (Part No: TC1279-68KIT) can be used.

**2. BENEFITS & FEATURES**

- Clips straight into notched ducting, and fits directly to tubular (or split) convoluted tube (Part No: TC1279-26 or TC1279-350); available separately
- Tough, fire retardant material.
- No joiners are necessary.
- Purchase by the unit

**3. TECHNICAL ATTRIBUTES**

Dimensions	210 mm (W) x 100 mm (H) x 80 mm (D)
Weight	120 grams
Materials	Fire retardant plastic, Halogen free, UL94-VO rated
Colour	Yellow