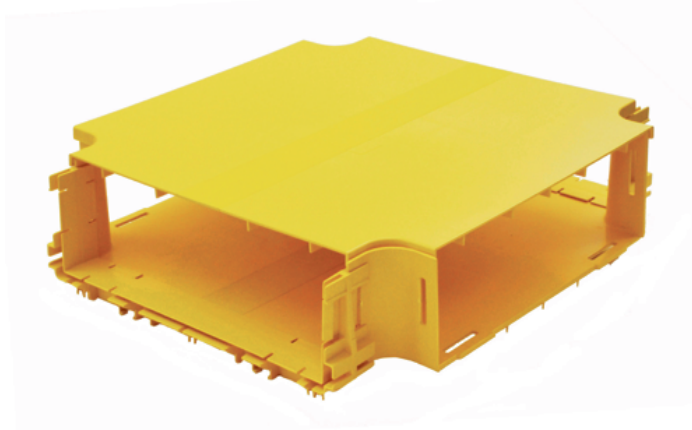


**CROSS CONNECTOR ASSEMBLY,  
FOR 300 mm DUCT****Part number: TC1279-300A****1. USE / APPLICATION**

This cross connector is used to establish a right-angled intersection between two 300 mm ducts. I.e. all 4 arms of the connector are connected to 300 mm duct or other components, using the standard joiner (Part No: TC1279-320). 2 x Standard Joiners (Part No: TC1279-320) are supplied. A slotless joiner for 300 mm duct (Part No: TC1279-287A) is also available NOTE: Care should be taken not to lay more than 50 mm depth of pigtails or patch cords in troughing, particularly where they cross each other at right angles. This may occur with this connector.

**2. BENEFITS & FEATURES**

- Includes cover (Part No: TC1279-301)
- Clips straight into standard joiner (Part No: TC1279-320)
- Tough, fire retardant material
- 2 x Standard Joiners (Part No: TC1279-320) supplied
- Purchase by the unit

**3. TECHNICAL ATTRIBUTES**

Dimensions	405 mm (W) x 105 mm (H) x 405 mm (D)
Weight	1.75 Kg
Materials	Fire retardant plastic, Halogen free, UL94-VO rated