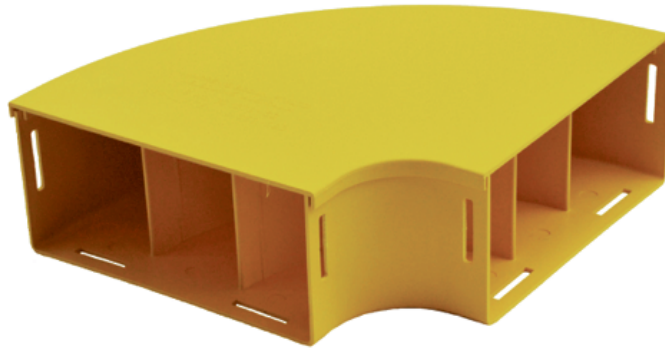


**ELBOW ASSEMBLY, HORIZONTAL,
90 DEGREES, 220 mm DUCT**

Part number: TC1279-29A

**1. USE / APPLICATION**

The 220 mm elbow assembly is used to provide a horizontal, right angled bend (right or left hand) with standard 220 mm straight ducting. It requires a standard joiner (Part No: TC1279-25) at each interface, which provides a smooth & strong joint. (Note: A slotless joiner, Part No: TC1279-250A is also available).

2. BENEFITS & FEATURES

- Includes cover (Part No: TC 1279-30)
- Clips straight into joiner
- Tough, fire retardant material
- Joiners (Part No's: TC1279-25 or TC1279-250A) available separately.
- Purchase by the unit

3. TECHNICAL ATTRIBUTES

Dimensions	305 mm (W) x 105 mm (H) x 305 mm (D)
Weight	812 grams
Materials	Fire retardant plastic, Halogen free, UL94-VO rated