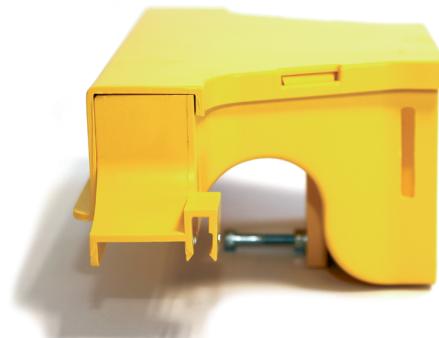


## TOP OUTLET ASSEMBLY, HORIZONTAL, FOR 100 mm, 220 mm & 300 mm DUCT

Part number: TC1279-290A/290ASL



TC1279-290A



TC1279-290ASL

**Note:** Top Outlet Assembly mounted on Bracket (Part No: TC1279-292A); available separately

**Note:** Part No: TC1279-290ASL is provided with slots, for use with joiner Part No: TC1279-27

### 1. USE / APPLICATION

This Top Outlet Assembly for optical fibre cord, allows individual cords to exit anywhere along a length of straight 100 mm, 220 mm & 300 mm duct. The unit simply fits along the edge of the duct - ie the side of the duct is not specially prepared or cut. The exiting optical fibre cords are guided through an MBR of 30 mm whilst completing this change of direction. The outlet guide can be connected to 100 mm duct, using either: a slotless joiner (Part No: TC1279 - 248A) or a standard joiner (Part No: TC1279 - 27). Alternatively, the 100 mm outlet can be connected to any standard duct size, as required, using standard duct adapters. The Top Outlet Assembly comes with a screw, which acts as a stand - off from the side of the duct. For heavy duty applications, the unit can be mounted on a steel bracket (Part No: TC1279 - 292A), which is bolted to the central, mid area of the unit. The steel mounting bracket is available separately. The mounting bracket can be secured to any of the standard duct mounting items. The unit comes with a removable lid. Duct covers for 100 mm, 220 mm & 300 mm duct, are available separately. These items cover the area of duct behind the Top Outlet Assembly (Part No's: TC1279-290B; TC1279-290C; TC290-290D).

### 2. BENEFITS & FEATURES

- Provides an exit for optical fibre cords, anywhere along a straight 100 mm, 220 mm or 300 mm duct
- Maintains the MBR of 30 mm for all exiting optical fibre cords
- Easily installed without having to cut the side of the duct
- Connects to 100 mm duct, for exiting optical fibre cords, using either: a slotless joiner (Part No: TC1279 - 248A) or a standard joiner (Part No: TC1279 - 27); available separately
- Easily and effectively mounts on mounting bracket (Part No: TC1279 - 292A); available separately
- Purchase by the unit

### 3. TECHNICAL ATTRIBUTES

Dimensions	279 mm (W) x 102 mm (H) x 144 mm (D)
Weight	425 grams
Materials	Fire retardant plastic, Halogen free, UL94-VO rated