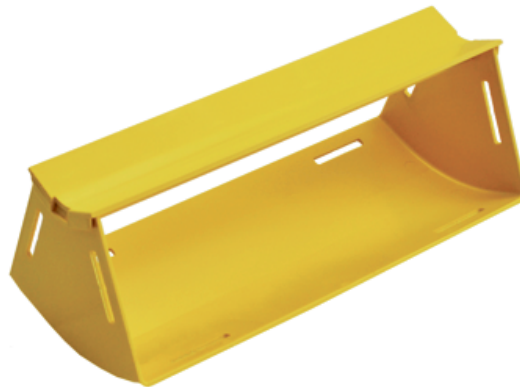


**ELBOW ASSEMBLY, INTERNAL LID, 45 DEGREES UP,  
300 mm DUCT****Part number: TC1279-283A**

Also available without the lid, as (Part No: TC1279-283)

**1. USE / APPLICATION**

The 45 degree up elbow is a 300 mm vertical lead off with an internal lid, so that new fibres can be installed within the elbow and existing fibres removed, where necessary. This is usually used where cables may be already installed and either an angular duct feed off or an alignment adjustment is needed. There are two 300 mm outlets, which use slotless joiners (Part No: TC1279-287A); which are available separately.

**2. BENEFITS & FEATURES**

- Provides fibre access and retrofit options
- Clips straight into a slotless joiner (Part No: TC1279-287A); which is available separately
- Includes cover, Part No: TC1279-284
- Ribs included for extra strength
- Tough, fire retardant material
- Also, available without cover, as Part No: TC1279-283
- Purchase by the unit

**3. TECHNICAL ATTRIBUTES**

Dimensions	312 mm (W) x 135 mm (H) x 124 mm (D)
Weight	300 grams
Materials	Fire retardant plastic, Halogen free, UL94-VO rated