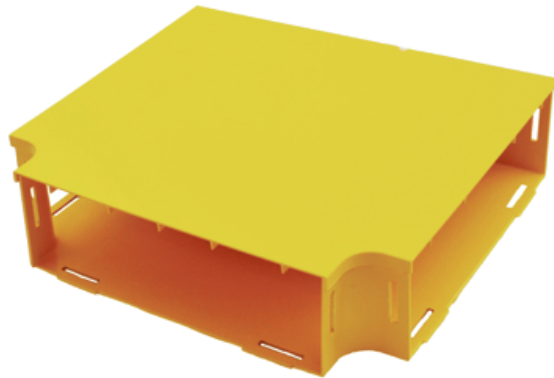


## TEE ASSEMBLY, 300 mm x 100 mm DUCT

Part number: TC1279-279A



Also available without the lid, as straight duct (Part No: TC1279-279)

### 1. USE / APPLICATION

This tee is used to provide a tee intersection with standard 300 mm straight ducting. It requires a slotless joiner (Part No: TC1279-287A) at each interface, which provides a smooth & strong joint. Joiners, available separately.

### 2. BENEFITS & FEATURES

- Includes cover (Part No: TC1279-280)
- Clips straight into slotless joiner (Part No: TC1279-287A); available separately
- Ribs included for extra strength
- Tough, fire retardant material
- Also available without cover; as Part No: TC 1279-279
- Purchase by the unit

### 3. TECHNICAL ATTRIBUTES

Dimensions	405 mm (W) x 114 mm (H) x 358 mm (D)
Weight	1220 grams
Materials	Fire retardant plastic, Halogen free, UL94-VO rated