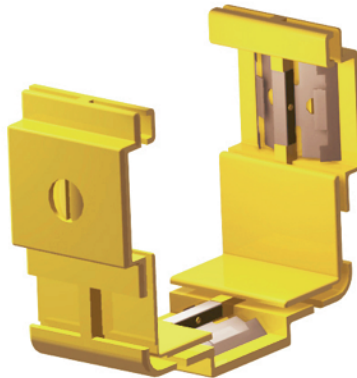


**SLOTLESS JOINER, 100 mm DUCT****Part number: TC1279-248A****1. USE / APPLICATION**

The slotless joiner is used to link standard 100 mm straight ducting with itself or any of the other 100 mm components; with which it provides a smooth & strong joint. Typical other fittings are: horizontal or vertical elbows, cross connectors, tees, etc.; which require a joiner at each interface. The slotless joiner incorporates three metal spring brackets, which securely grip with the flat face of the mating 100 mm duct components. This ensures that a positive, permanent connection is achieved. The slotless joiner is easily and simply locked or released by turning the locking slot through 90 degrees; using either a coin or wide bladed screwdriver.

**2. BENEFITS & FEATURES**

- Quickly installed on 100 mm duct components, to achieve a positive connection
- Quickly released, using either a coin or wide bladed screwdriver
- Incorporates 3 spring brackets, that make a permanent connection between 100 mm duct components
- Tough, fire retardant material
- Purchase by the unit

**3. TECHNICAL ATTRIBUTES**

Dimensions	50 mm (W) x 100 mm (H) x 100 mm (D)
Weight	80 grams
Materials	Fire retardant plastic, Halogen free, UL94-VO rated