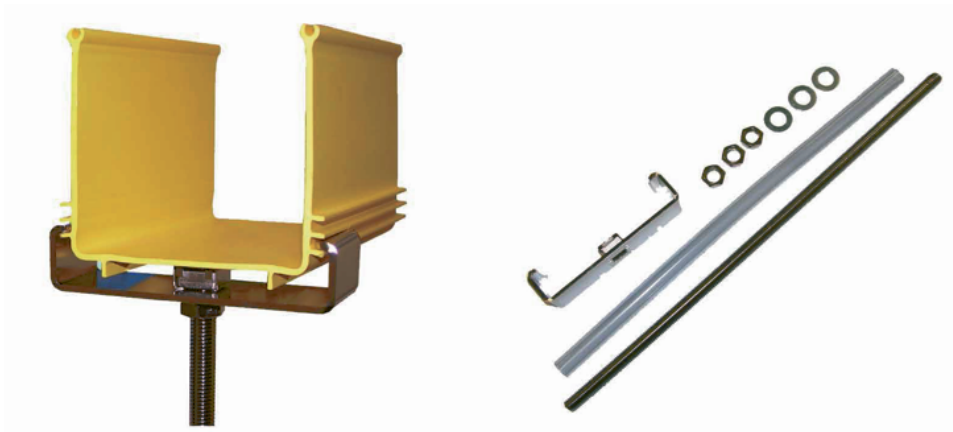


MOUNTING BRACKET, ASSEMBLY, 100 mm DUCT

Part number: TC1279-14A

**1. USE / APPLICATION**

The mounting bracket provides an adjustable mounting mechanism for the 220 mm plastic ducting system. It is basically an M12 threaded metal rod and support bracket that connects straight duct (Part No: TC1279-23A) to existing building steel - work. A plastic protection tube is included to prevent optical fibres catching in the rod thread.

2. BENEFITS & FEATURES

- Includes: M12 threaded rod, protection tube, support bracket with captive nut, lock nuts & washers
- Corrosion resistant nickel plated finish

3. TECHNICAL ATTRIBUTES

Rod	M12 dia. x 400 long
Bracket	40 mm (W) x 30 mm (H) x 126 mm (D) (3 mm thick)
Material	Mild steel
Weight	600 grams
Finish	Nickel Plated