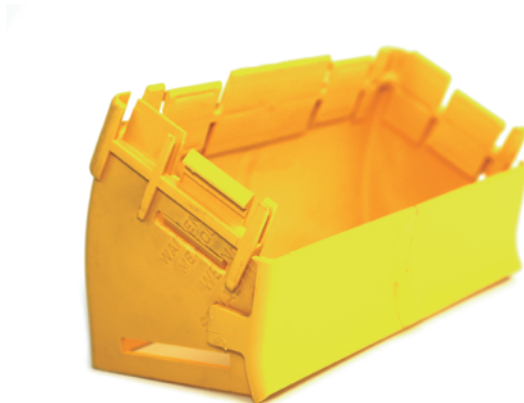


**ELBOW ASSEMBLY UP, 30 DEGREES,  
INTERNAL LID, 220 mm DUCT**

Part number: TC1279-125-30A

**1. USE / APPLICATION**

The 30 degree up elbow is a 220 mm angled lead off with an internal lid, so that new optical fibre cords can be installed within the elbow and existing fibre cords removed, where necessary. This is usually used where an angular duct feed off or an alignment adjustment is needed. There are two 220 mm outlets. One is equipped with a glued-in, modified joiner. (The special joiner provides a smooth internal curve for optical fibre cords.) The other side uses either a: standard joiner (Part No. TC1279-25) or a slotless joiner (Part No: TC1279-250A); that are available separately.

**2. BENEFITS & FEATURES**

- Provides easy access for fibre cords and allows fibre cords to be retrofitted
- Removable cover supplied
- A special, glued-in joiner provides a smooth transition for optical fibre cords
- Clips straight into either a: standard joiner (Part No. TC1279-25) or a slotless joiner (Part No: TC1279-250A; which are available separately
- Tough, fire retardant material
- Purchase by the unit

**3. TECHNICAL ATTRIBUTES**

Dimensions	110 mm (W) x110/128 mm (H) (Body/Joiner) x 230 mm (D)
Weight	242 grams
Materials	Fire retardant plastic, Halogen free, UL94-VO rated