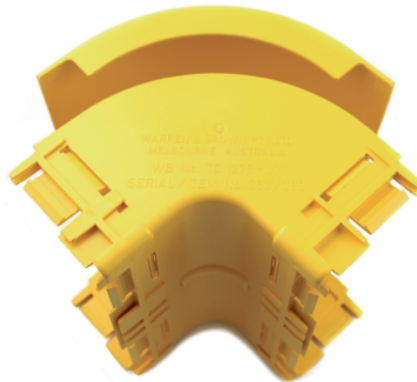


**ELBOW ASSEMBLY, DOWN, 90 DEGREES,
EXTERNAL LID, 220 mm DUCT****Part number: TC1279-123A****1. USE / APPLICATION**

This 90 degree down elbow is a 220 mm vertical drop off with an external lid, so that optical fibre cords installed within the elbow can be accessed. This is usually installed where optical fibre cords are to be dropped off below. There are two 220 mm outlets, which use either: standard joiners (Part No: TC1279 25) or slotless joiners (TC 1279 250A); are supplied.

2. BENEFITS & FEATURES

- Provides fibre access and retrofit options
- Provided with a special 220 mm duct joiner that provides a smooth transition for optical fibre cords
- Clips straight into joiner (Part No: TC1279-25) or slotless joiner (Part No: TC1279-250A); available separately
- Tough, fire retardant material
- Purchase by the unit

3. TECHNICAL ATTRIBUTES

Dimensions	166 mm (W) x 166 mm (H) x 224 mm (D)
Weight	560 grams
Materials	Fire retardant plastic, Halogen free, UL94-VO rated