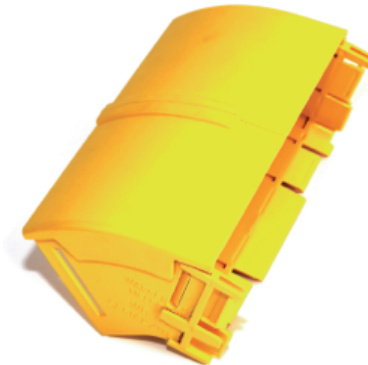


**ELBOW ASSEMBLY DOWN, 45 DEGREES,
EXTERNAL LID, 220 mm DUCT**

Part number: TC1279-123-45A

**1. USE / APPLICATION**

The 45 degree down elbow is a 220 mm angled lead off with an external lid, so that new optical fibre cords can be installed within the elbow and existing optical fibre cords removed, where necessary. This is usually used where an angular duct feed off or an alignment adjustment is needed. There are two 220 mm outlets. One is equipped with a glued-in, modified joiner. (The special joiner provides a smooth internal curve for optical fibre cords). The other side uses either: a standard joiner (Part No. TC1279-25) or a slotless joiner (Part No: TC1279-250A); that are available separately.

2. BENEFITS & FEATURES

- Provides easy access for optical fibre cord/s and allows optical fibre cords to be retrofitted
- Removable cover supplied
- A special, glued-in joiner, on one outlet, provides a smooth transition for optical fibre cords
- Clips straight into either: a standard joiner (Part No. TC1279-25) or a slotless joiner (Part No: TC1279-250A); which are available separately
- Tough, fire retardant material
- Purchase by the unit

3. TECHNICAL ATTRIBUTES

Dimensions	150 mm (W) x 134 mm (H) x 228 mm (D)
Weight	290 grams
Materials	Fire retardant plastic, Halogen free, UL94-VO rated