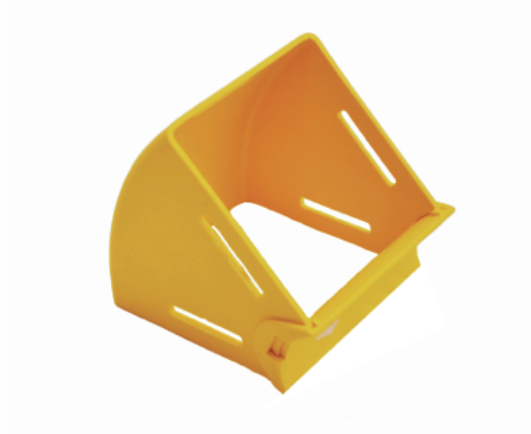


**ELBOW ASSEMBLY, UP, 45 DEGREES,
INTERNAL LID, 100 mm DUCT****Part number: TC1279-113-45A****1. USE / APPLICATION**

The 45 degree up elbow is a 100 mm vertical lead off with an internal lid, so that new optical fibre cords can be installed within the elbow and existing optical fibre cords removed, where necessary. This is usually used where optical fibre cords may be already installed and either an angular duct feed off or an alignment adjustment is needed. There are two 100 mm outlets which use either: standard joiners (Part No. TC1279- 27) or slotless joiners (Part No: TC1279-248A); that are available separately.

2. BENEFITS & FEATURES

- Provides fibre access and retrofit options
- Removable cover supplied
- Clips straight into either: a standard joiner (Part No. TC1279-27) or a slotless joiner (Part No: TC1279-248A); which are available separately
- Tough, fire retardant material
- Purchase by the unit

3. TECHNICAL ATTRIBUTES

| | |
|------------|---|
| Dimensions | 130 mm (W) x 130 mm (H) x 106 mm (D) |
| Weight | 300 grams |
| Materials | Fire retardant plastic, Halogen free, UL94-VO rated |