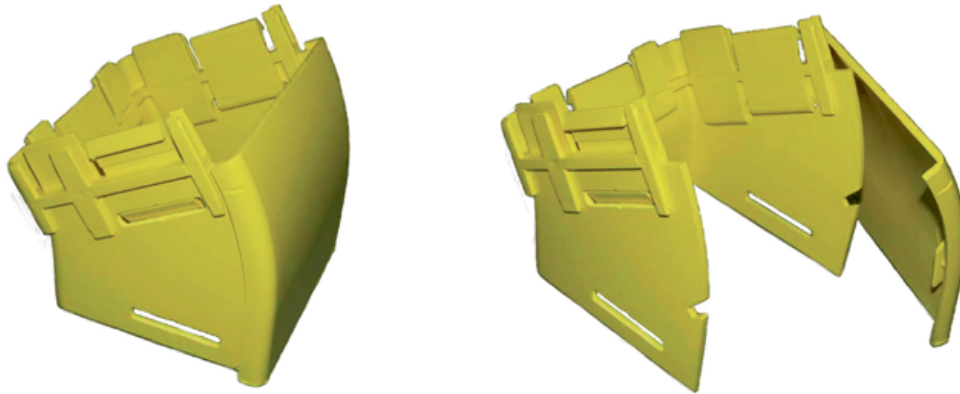


**ELBOW ASSEMBLY, DOWN, 30 DEGREES,
EXTERNAL LID, 100 mm DUCT**

Part number: TC1279-111-30A

**1. USE / APPLICATION**

This 100 mm down elbow is a 30 degree angled lead off with an external lid, so that new optical fibre cords can be installed within the elbow and existing optical fibre cords removed, where necessary. It is usually used where an angular duct feed off or an alignment adjustment is needed. There are two 100 mm outlets. One is equipped with a glued-in, modified joiner. (The special joiner provides a smooth internal curve for optical fibre cords.) The other side uses either a: standard joiner (Part No. TC1279-27) or a slotless joiner (Part No: TC1279-248A); that are available separately.

2. BENEFITS & FEATURES

- Provides easy access for optical fibre cords, and allows optical fibre cords to be retrofitted
- Removable cover supplied
- A special, glued-in joiner provides a smooth transition for optical fibre cords
- Clips straight into either a: standard joiner (Part No. TC1279-27) or a slotless joiner (Part No: TC1279-248A); which are available separately
- Tough, fire retardant material
- Purchase by the unit

3. TECHNICAL ATTRIBUTES

| | |
|------------|---|
| Dimensions | 112 mm (W) x 108/120 mm (H)(Body/Joiner) x 113 mm (D) |
| Weight | 156 grams |
| Materials | Fire retardant plastic, Halogen free, UL94-VO rated |