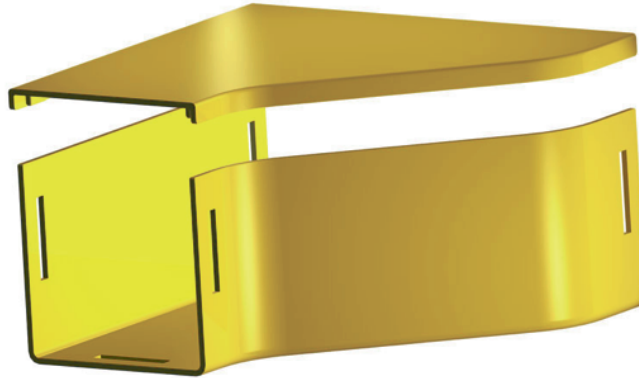


**RIGHT HAND ADAPTOR ASSEMBLY,
220 mm – 100 mm DUCT****Part number: TC1279-05A****1. USE / APPLICATION**

The 220-100 mm RH adaptor is used to provide a reducing connection between standard 220 mm and 100 mm straight ducting, or tee pieces. The adaptor requires standard joiners (Part No's: TC1279-25 & TC1279-27) at the 220 mm & 100 mm interfaces, which produces smooth & strong joints. Alternatively, slotless joiners (Part No's: TC1279-250A & TC1279-248A) can be used.

2. BENEFITS & FEATURES

- Includes cover (Part No: TC1279-06)
- Clips straight into joiners
- Tough, fire retardant material
- Joiners (Part No's: TC1279-25 & TC1279-27 or TC1279-250A & TC1279-248A), available separately
- Purchase by the unit

3. TECHNICAL ATTRIBUTES

Dimensions	215 mm (W) x 105 mm (H) x 233 mm (D)
Weight	454 grams
Materials	Fire retardant plastic, Halogen free, UL94-VO rated