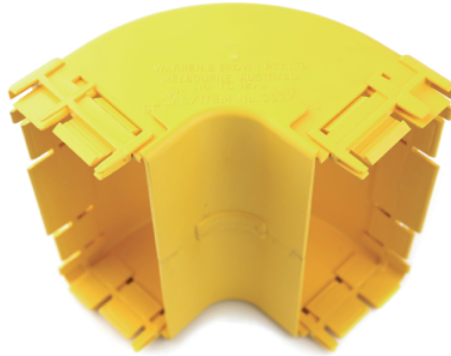


**ELBOW ASSEMBLY, UP, 90 DEGREES,
INTERNAL LID, 220 mm DUCT****Part number: TC1279-125A****1. USE / APPLICATION**

The 90 degree up elbow is a 220 mm vertical lead off, with an internal lid, so that optical fibre cords within the elbow can be accessed. This is usually installed where fibre cords are to be installed vertically. There are two 220 mm outlets, which use either: standard joiners (Part No: TC1279-27) or slotless joiners (Part No: TC1279-250A); that are available separately.

2. BENEFITS & FEATURES

- Provides easy access for fibre cords and allows fibre cords to be retrofitted
- Clips straight into either: standard joiners (Part No: TC1279-27) or slotless joiners (Part No: TC1279-250A); which are available separately
- Tough, fire retardant material
- Standard joiners (TC1279-25) included. (Alternative slotless joiners (Part No: TC1279-250A) can be used)
- Purchase by the unit

3. TECHNICAL ATTRIBUTES

Dimensions	175 mm (W) x 175 mm (H) x 224 mm (D)
Weight	550 grams
Materials	Fire retardant plastic, Halogen free, UL94-VO rated