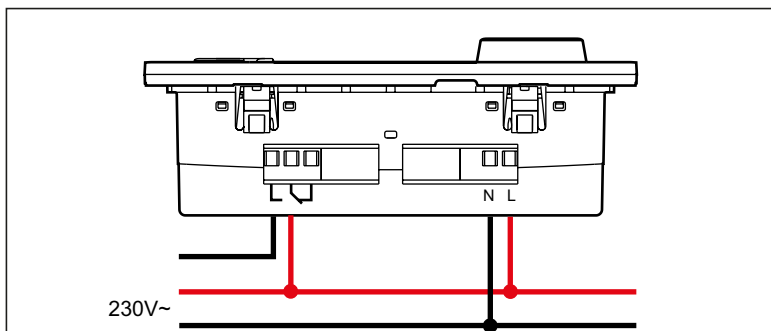
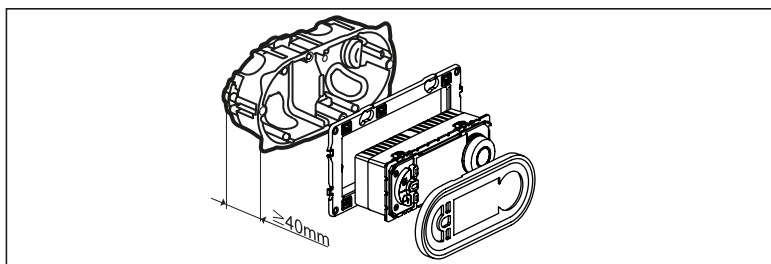
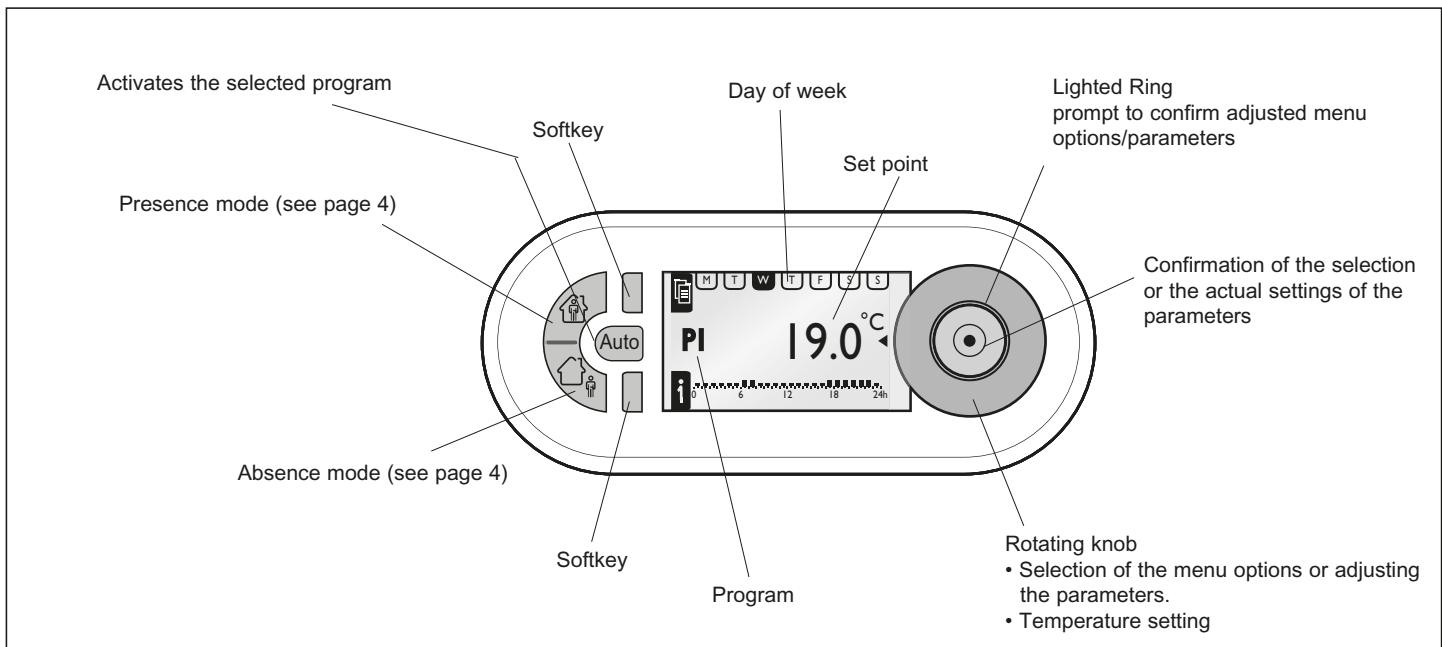


Technical data		
Supply voltage:	230V 50/60Hz	
Power consumption:	1 W	
Relay output:	1 changeover contact 8A 250V~ cos φ = 1	
Accuracy:	± 1 s /day, day under typical installation conditions	
Wire cross-sections:	single strand	multi strand
	1,5...4 mm <sup>2</sup>	1,5...2,5 mm <sup>2</sup>
Programs (saved by EEPROM)	4x predefined, 1x individual	
Running reserve:	100h for all settings	
Range of adjustment:	+7°C ... +30°C	
Frost protection temperature:	+7°C	
Storage temperature:	- 10°C to +60°C	
Ambient temperature	- 5°C to +50°C	
Operating principle:	Typ 1.B. EN 60730-1	
Energy class	IV = 2%, EU 811/2013	











Use the same power supply phase for supply and relay.  
For an optimal temperature control it is advisable to use a contactor when operating with a load greater than 4A.

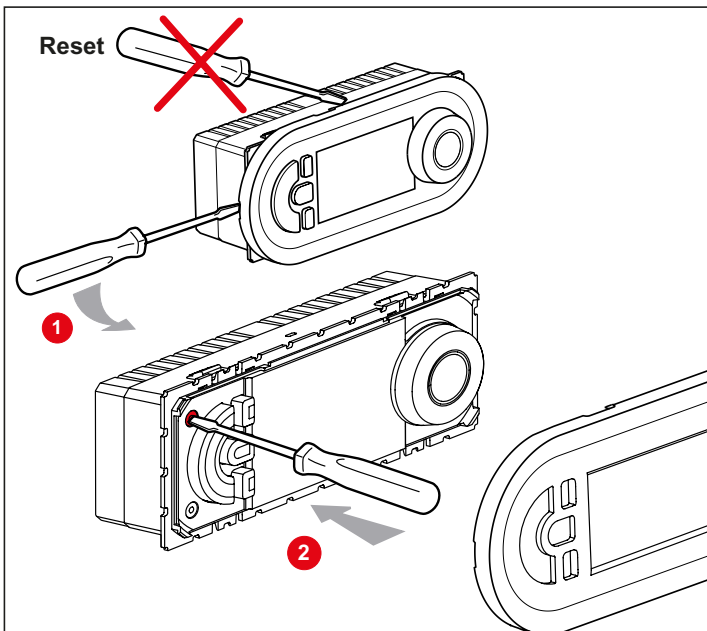
**Softkey**

- Displays the MENU
- Back
- Information
- Adjust number of days (1-30) of absence- and presence-mode

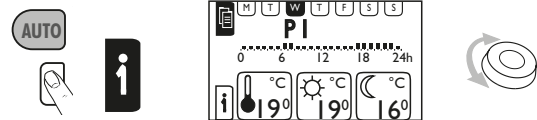
MENU					
SETUP (PARAMETRAGE)					
	LANGUAGE (LANGUE)	ENGLISH / DEUTSCH / FRANCAIS / ESPANOL / NEDERLANDS			
	DATE/TIME	DATE	TIME	SUMMERTIME	EUROPE, US NONE, USER DEFINED
	TEMP. -SETTINGS	T° COMFORT	T° REDUCED		
	WALL COMPENS.	+ 0.0°C			
	PRESENCE TIME	6-22 O'CLOCK	0-24 O'CLOCK		
	DISPLAY	CONTRAST	BRIGHTNESS		
PROGRAMMES					
<b>P1- FULLTIME</b> M T W T F S S 06:00 - 08:00 17:00 - 22:00 0 6 12 18 24h	M T W T F S S 06:00 - 22:00 0 6 12 18 24h	SELECT INFO MODIFY RESET			
<b>P2- UNEMPLOYED</b> M T W T F S S 06:00 - 22:00 0 6 12 18 24h	M T W T F S S 06:00 - 22:00 0 6 12 18 24h	SELECT INFO MODIFY RESET			
<b>P3- SCHOOL</b> M T W T F S S 06:00 - 08:00 12:00 - 14:00 17:00 - 22:00 0 6 12 18 24h	M T W T F S S 06:00 - 22:00 0 6 12 18 24h	SELECT INFO MODIFY RESET			
<b>P4- PART-TIME</b> M T W T F S S 06:00 - 08:00 12:00 - 22:00 0 6 12 18 24h	M T W T F S S 06:00 - 22:00 0 6 12 18 24h	SELECT INFO MODIFY RESET			
<b>P5- USER DEF.</b>	USER DEFINED	CREATE / SELECT INFO, MODIFY, DELETE			
<b>OPTIONS</b>	INFO	THERM PROG dd/mm/yyyy VERSION xx			
	RESET SETTINGS				

### Symbols

-  Presence mode - with indication of the residence days
-  Absence mode - with indication of the absence days
-  Absence-frost - with indication of the absence days
-  Heating engaged
-  manual operating mode
-  actual temperature
-  reduced temperature
-  comfort temperature

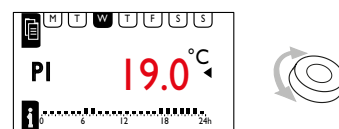


### Program information



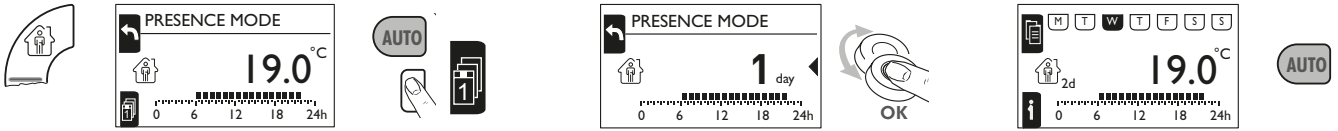
### Manual regulation

Modifies the setpoint directly in steps of 0,5 °C; this action doesn't affect the chosen mode. With the next automatic switching, either due to a program or because of a return to the auto mode, the setpoint is set back to the pre-selected value.





## Presence mode



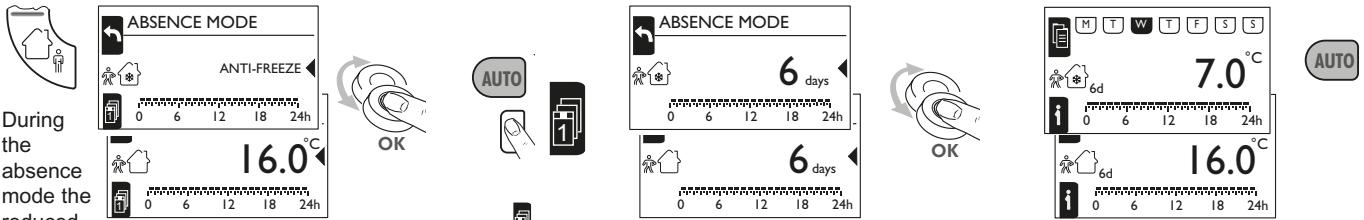
Activates the comfort level between 6:00-22:00/0:00-24:00, the rest of the day the reduced level is active. This mode can be initiated for an unlimited time or for a number of days between 1 and 30.

If button is not pressed for 20s or button OK is pressed after the display of presence mode screen, an unlimited number of days will be set.

Adjust number of days (1-30) of presence-mode

After expiration of the adjusted days or pressing the key AUTO returns to AUTO mode.

## Absence mode



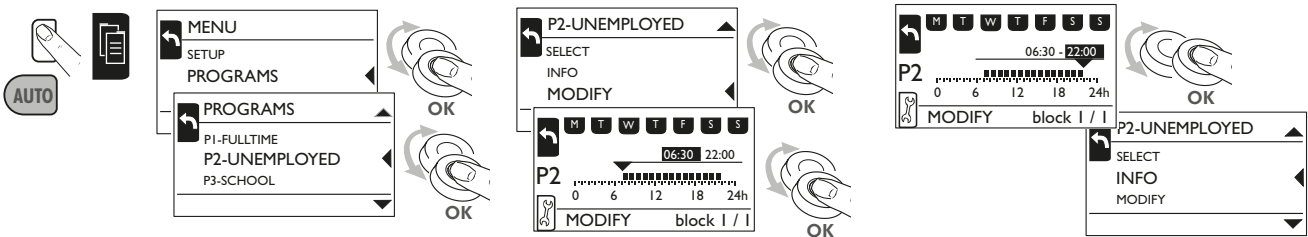
During the absence mode the reduced or the frost protection level is activated throughout the day. The user can choose which level is actually used. This mode can be initiated for an unlimited time or for a number of days between 1 and 30.

If button is not pressed for 20s or button OK is pressed after the display of presence mode screen, an unlimited number of days will be set.

Adjust number of days (1-30) of absence-mode

After expiration of the adjusted days or pressing the key AUTO returns to AUTO mode.

## Modify programs Changes ON/OFF-times



## Create program 5

