

Arteor™

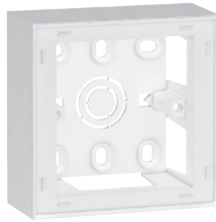
mounting supports, IP 44 plate and mounting boxes



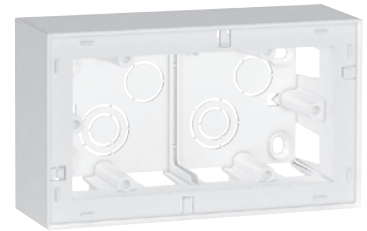
5760 16



5751 90



5723 90



5723 92

Support frames and surround plates selection charts p. 30, 32-35

Pack	Cat. Nos.	Panel mounting supports
10	5760 15	For 1 to 3 mm thick panels For 1 module Clips into a 28 x 53.5 mm aperture
10	5760 16	For 2 modules Clips into a 58 x 53.5 mm aperture
10	5760 13	Modular support For mounting 2 modules mechanisms on symmetrical rail
5	5751 90	IP 44 plate For British and German standards For mounting in 1 gang box Support frame supplied

Pack	Cat. Nos.	Flush mounting boxes
1	6890 27	For British standard 6 and 8 module plates and frames For 6 modules 72 x 212 x 42 mm
1	6890 38	For 8 modules 72 x 227 x 42 mm
1	6890 28	For 2 x 6 modules 143 x 212 x 42 mm
1	0818 56	For 3 x 6 modules 212 x 212 x 42 mm

Pack	Cat. Nos.	Surface mounting boxes
10	5723 90	For British, German and French standard For 2 modules - 1 gang 38 mm depth
25	5723 92	For 4 modules 2 x 2 modules - 2 gang 48 mm depth (suitable for shaver sockets)
2	5723 96	For 2 x 6 modules 38 mm depth